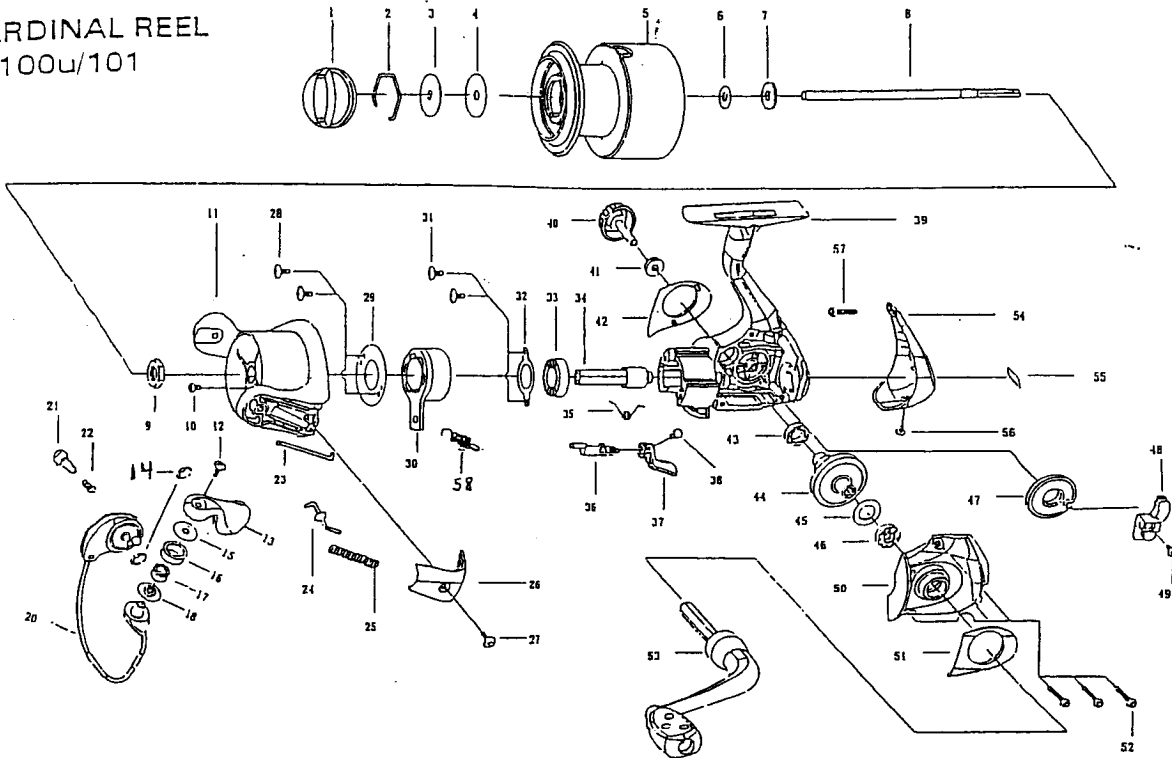


# EXPLODED VIEW

CARDINAL REEL  
100U/101



C100U/C101FD

2002

NO	DESCRIPTION	100U	101	NO	DESCRIPTION	100U	101
1	drag knob	1085265	1085265	30	one way ball bearing	1085543	1085543
2	retainer ring	1092606	1092606	31	screw	1092775	1092777
3	washer	1092607	1092607	32	retainer ring	1085332	1085332
4	washer	1092709	1092709	33	ball bearing	1085544	1085544
5	Spool Assembly	1085604	1085616	34	pinion gear	1085545	1085545
5	Spool Assy Poly.	1091652	1091653	35	spring	1085546	1085546
6	washer	1085270	1085270	36	anti-reverse pin	1085547	1085547
7	click gear	1085271	1085271	37	anti-reverse lever	1092716	1092716
8	main shaft	1085605	1092817	38	screw	1092777	1092775
9	rotor nut	1085606	1085618	39	body	1085548	1085548
10	screw	1085900	1085900	40	handle screw cap	1092778	1092778
11	rotor	1085607	1085619	41	washer	1092781	1092781
12	screw	1085608	1085608	42	body decoration plate	1092811	1092811
13	bail arm	1085609	1085620	43	bushing	1092724	1092724
14	ring	1085323	1085323	44	drive gear	1085550	1085550
15	bushing	1092791	1092791	45	bushing	1085551	1085551
16	line roller	1085364	1085364	46	ball bearing	1085552	1085552
17	ball bearing	1085365	1085365	47	oscilation gear	1085612	1092815
18	bushing	1085536	1085536	48	slider	1085613	1092816
20	BAIL ASSY	1085824	1085621	49	screw	1085456	1085456
21	click pin	1085538	1085538	50	body cap	1092804	1092819
22	spring	1085539	1085539	51	body cap decoration plate	1092809	1092809
23	bail lever	1085610	1092818	52	screw	1085599	1085599
24	bail lever	1085540	1085540	53	handle assembly	1085600	1085600
25	spring	1085541	1085541	54	rear cover	1092813	1092813
26	rotor cover	1085611	1085623	55	logo plate	1085602	1085602
27	screw	1092775	1092775	56	screw	1092710	1092710
28	screw	1092844	1092844	57	screw	1085603	1085603
29	one way retainer ring	1085542	1085542	58	spring	1080731	1080731

39