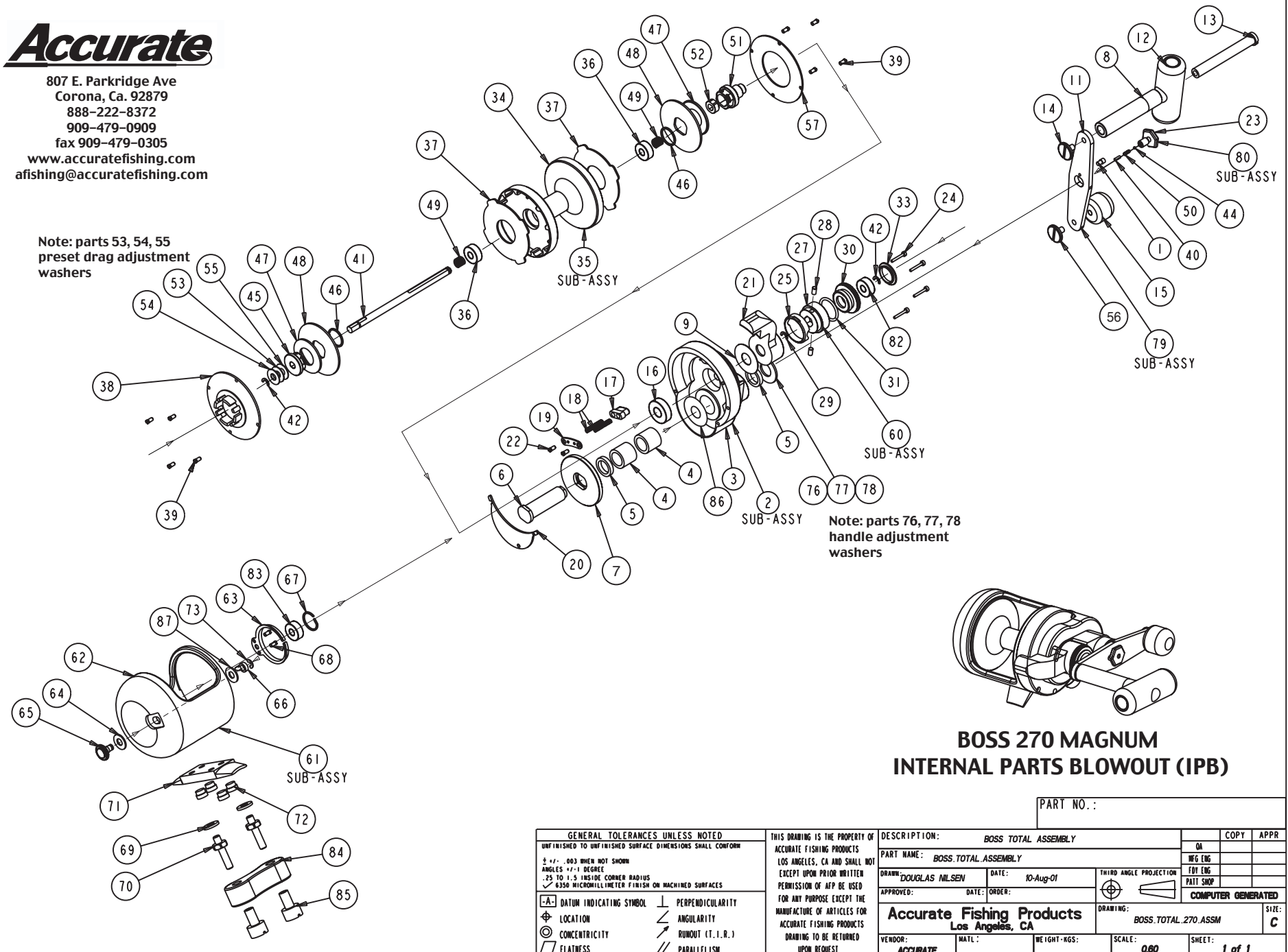


# Accurate

807 E. Parkridge Ave  
 Corona, Ca. 92879  
 888-222-8372  
 909-479-0909  
 fax 909-479-0305  
 www accuratefishing.com  
 afishing@accuratefishing.com

Note: parts 53, 54, 55  
 preset drag adjustment  
 washers

Note: parts 76, 77, 78  
 handle adjustment  
 washers



## BOSS 270 MAGNUM INTERNAL PARTS BLOWOUT (IPB)

PART NO.:

<b>GENERAL TOLERANCES UNLESS NOTED</b> UNFINISHED TO UNFINISHED SURFACE DIMENSIONS SHALL CONFORM ± .01 - .003 WHEN NOT SHOWN ANGLES ± 1-1 DEGREE .25 TO 1.5 INSIDE CORNER RADIUS ✓ 63µm MICRONITRIMETER FINISH ON MACHINED SURFACES		THIS DRAWING IS THE PROPERTY OF ACCURATE FISHING PRODUCTS LOS ANGELES, CA AND SHALL NOT BE REPRODUCED OR COPIED IN ANY MANNER WITHOUT THE WRITTEN PERMISSION OF AFP BE USED FOR ANY PURPOSE EXCEPT THE MANUFACTURE OF ARTICLES FOR ACCURATE FISHING PRODUCTS DRAWING TO BE RETURNED UPON REQUEST		<b>DESCRIPTION:</b> BOSS TOTAL ASSEMBLY <b>PART NAME:</b> BOSS TOTAL ASSEMBLY DRAWN: DOUGLAS NILSEN DATE: 10-Aug-01 APPROVED: DATE: ORDER:		OR MFG ENG FBT ENG PART SHOP <b>COMPUTER GENERATED</b>
DATUM INDICATING SYMBOL LOCATION CONCENTRICITY FLATNESS		PERPENDICULARITY ANGULARITY RUMOUT (I.I.R.) PARALLELISM		Accurate Fishing Products Los Angeles, CA DRAWING: BOSS TOTAL 270 ASSM VENDOR: ACCURATE SCALE: 0.80 SHEET: 1 of 1		

### BOSS 270 MAGNUM REEL REV B

No.	COMPONENT NAME	QTY	PART No.	Price	No.	COMPONENT NAME	QTY	PART No.	Price
1	BOSS HANDLE KEEPER SCREW	1	B-1800	\$ 0.27	44	BOSS HANDLE SCREW BALL	1	B-1646	\$ 0.17
2	BOSS 197, 270 SIDEPLATE SUB-ASSY	1	B-1672	\$ 183.33	45	BOSS CLICKER DRAG CAP	1	B-984	\$ 6.67
3	BOSS 197, 270 SIDEPLATE	1	B-1016	\$ 50.00	46	BOSS DRAG CAP RETAINER	2	B-1048	\$ 0.50
4	BOSS ANTI-REVERSE BEARING	2	B-1270	\$ 16.67	47	BOSS DRAG BEVEL WASHER	2	B-1020	\$ 1.67
5	BOSS GEAR SHAFT BUSHING	2	B-1632	\$ 1.25	48	BOSS TITANIUM WASHER	2	B-1014	\$ 16.67
6	BOSS GEAR SHAFT	1	B-982	\$ 12.00	49	BOSS SPOOL SPRING	2	70577S	\$ 1.00
7	BOSS MAIN GEAR 4.6:1	1	B-1492	\$ 16.67	50	BOSS HANDLE SCREW SPRING	1	B-1650	\$ 1.00
8	BOSS HANDLE KNOB HUB	1	AR-50040	\$ 2.83	51	BOSS PINION GEAR 4.6:1	1	B-1494	\$ 28.33
9	BOSS MAIN LEVER WASHER	1	B-1028	\$ 0.27	52	BOSS PINION BUSHING	1	B-990	\$ 4.17
11	BOSS COUNTERWEIGHT HANDLE	1	B-1076	\$ 8.33	53	BOSS SPOOL ADJ. WASHER .015	1	B-1254	\$ 0.33
12	BOSS HANDLE KNOB	1	B-1068	\$ 7.50	54	BOSS SPOOL ADJ. WASHER .020	1	B-1606	\$ 0.42
13	BOSS HANDLE PIN	1	B-1070	\$ 2.67	55	BOSS SPOOL ADJ. WASHER .025	1	B-1610	\$ 0.50
14	BOSS HANDLE SCREW-LEFT HAND	1	B-1190	\$ 1.20	56	BOSS COUNTERWEIGHT SCREW RH	1	B-1616	\$ 0.25
15	BOSS HANDLE COUNTERWEIGHT	1	B-1086	\$ 3.33	57	BOSS 197, 270 SPOOL COVER G/S	1	B-1524	\$ 5.00
16	BOSS GEAR SIDEPLATE BEARING	1	B-1272	\$ 9.90	60	BOSS TENSION CAM SUB-ASSY	1	B-1614	\$ 21.67
17	BOSS STRIKE BUTTON	1	L-832	\$ 0.33	61	BOSS 270 FRAME SUB-ASSY	1	B-1674	\$ 130.35
18	BOSS STRIKE BUTTON SPRING	2	70080S	\$ 1.07	62	BOSS 270 FRAME	1	B-938	\$ 71.42
19	BOSS STRIKE BUTTON COVER	1	L-1050	\$ 2.00	63	BOSS CLICKER RING	1	522	\$ 5.00
20	BOSS 197, 270 GEAR COVER	1	B-1502	\$ 1.67	64	BOSS CLICKER KNOB WASHER	1	B-1126	\$ 0.33
21	BOSS 197, 270 MAIN LEVER ARM	1	B-1032	\$ 13.33	65	BOSS CLICKER KNOB	1	B-1038	\$ 3.33
22	BOSS STRIKE BUTTON SCREWS	2	B-1290	\$ 0.23	66	BOSS CLICKER DOG	1	B-1040	\$ 2.67
23	BOSS GEAR SHAFT HANDLE SCREW	1	B-1274	\$ 3.47	67	BOSS FRAME RETAINER	1	B-1052	\$ 0.42
24	BOSS SIDEPLATE SCREWS	4	B-1294	\$ 0.42	68	BOSS CLICKER RING SCREWS	2	B-1296	\$ 0.17
25	BOSS TENSION CAM TRACK	1	B-996	\$ 8.33	69	BOSS FRAME STUD WASHERS	2	B-1276	\$ 0.25
27	BOSS TENSION CAM	1	B-988	\$ 8.33	70	BOSS FRAME STUD	2	B-1154	\$ 1.67
28	BOSS TENSION CAM PIN	2	L-872	\$ 1.67	71	BOSS FRAME BASE (FOOT)	1	B-1084	\$ 11.67
29	BOSS MAIN LEVER RETAINER	1	B-1640	\$ 1.13	72	BOSS FRAME BASE SCREWS	4	B-1278	\$ 0.25
30	BOSS TENSION CAM WASHER	1	B-986	\$ 7.50	73	BOSS CLICKER KNOB RETAINER	1	B-1298	\$ 0.33
31	BOSS TENSION CAM O-RING	1	B-1292	\$ 0.17	76	BOSS HANDLE WASHER .010	1	B-1658	\$ 0.33
33	BOSS TENSION CAM COVER	1	B-1080	\$ 0.33	77	BOSS HANDLE WASHER .015	1	B-1660	\$ 0.42
34	BOSS 270 SPOOL	1	B-1044	\$ 45.83	78	BOSS HANDLE WASHER .025	1	B-1662	\$ 0.50
35	BOSS 270 SPOOL SUB-ASSY	1	B-1676	\$ 199.02	79	BOSS COUNTERWEIGHT HANDLE SUB-ASSY	1	B-1666	\$ 31.58
36	BOSS SPOOL BEARING	2	B-1624	\$ 6.67	80	BOSS HANDLE SCREW SUB-ASSY	1	B-1668	\$ 6.67
37	BOSS 270 FIBER WASHER	2	B-1142	\$ 12.50	82	BOSS TENSION CAM BEARING	1	B-1280	\$ 8.33
38	BOSS 197, 270 SPOOL COVER C/S	1	B-1012	\$ 6.67	83	BOSS FRAME BEARING	1	B-1280	\$ 8.33
39	BOSS SPOOL COVER SCREWS	8	B-2754	\$ 0.17	84	BOSS FRAME CLAMP	1	B-660	\$ 13.33
40	BOSS HANDLE SCREW ROLL PIN	1	B-1642	\$ 0.12	85	BOSS FRAME CLAMP SLEEVE NUT	2	B-1444	\$ 2.08
41	BOSS 270 SPOOL SHAFT	1	B-998	\$ 9.17	86	BOSS MAIN GEAR SHAFT WASHER .010	1	B-2360	\$ 0.30
42	BOSS SPOOL SHAFT RETAINER	2	B-1284	\$ 0.33	87	BOSS CLICKER DOG WASHER	1	B-3128	\$ 0.33