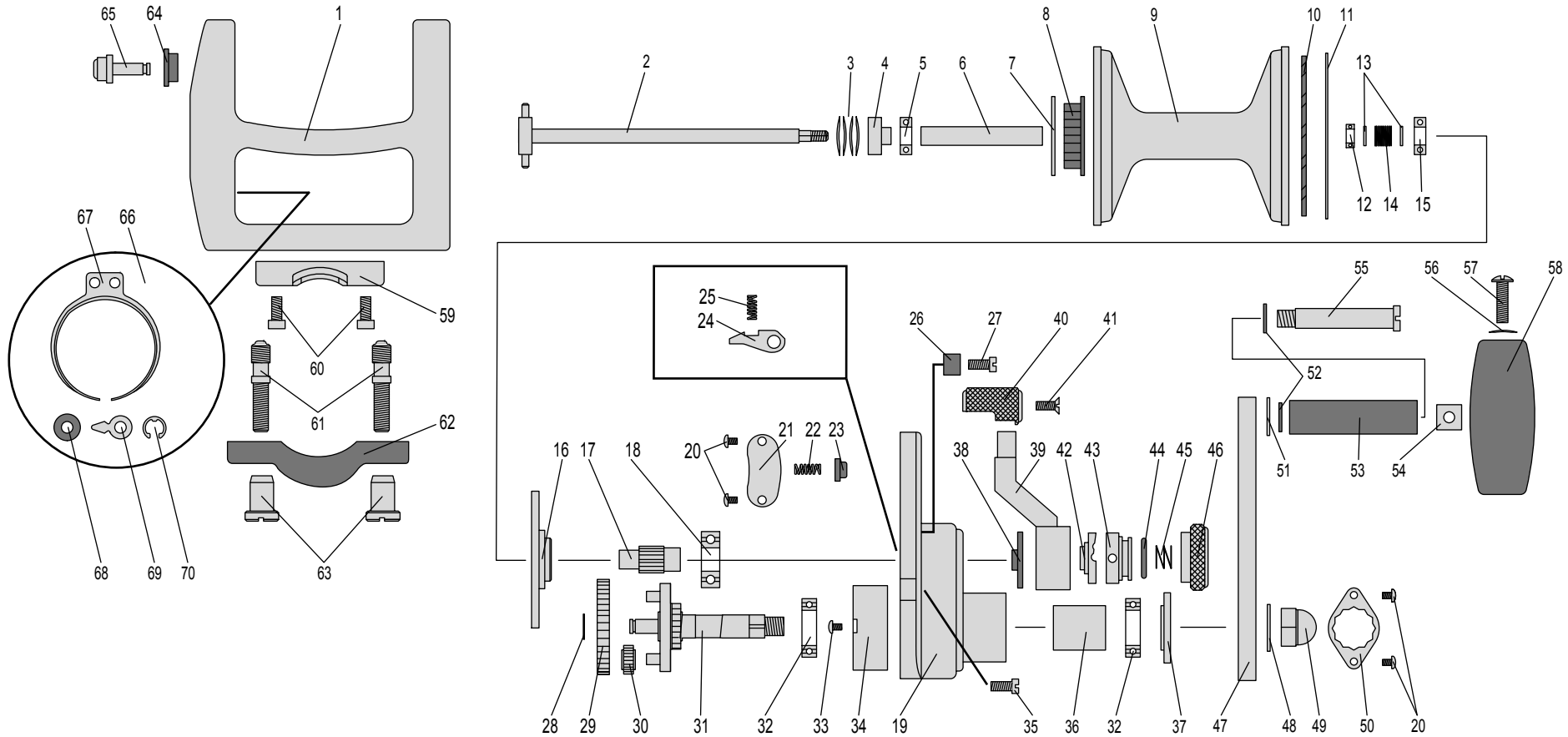


# Models JX - 8.0 Parts List



1 - Main Housing	JX801-001	16 - Brake Disk	JX801-016	31 - Drive Shaft	JX801-031	46 - Preset Knob	JX801-046	61 - Rod Mount Studs (2 req.)	JX801-061
2 - Spool Shaft	JX801-002	17 - Pinion Gear	JX801-017	32 - Drive Shaft Bearing (2 req.)	JX801-032	47 - Crank Arm	JX801-047	62 - Rod Mount Clamp	JX801-062
3 - Belleville Washers (4 req.)	JX801-003	18 - Pinion Bearing	JX801-018	33 - End Housing Screw (3 req.)	JX8401-033	48 - Crank Arm Washer	JX801-048	63 - Rod Mount Nut (2 req.)	JX801-063
4 - Pusher Bushing	JX801-004	19 - End Housing	JX801-019	34 - Gear Housing	JX801-034	49 - Acorn Nut	JX801-049	64 - Pin Support	JX801-064
5 - Spool Bearing	JX801-005	20 - Screw (4 req.)	JX801-020	35 - End Housing Screw	JX801-035	50 - Locking Plate	JX801-050	65 - Clicker Pin	JX801-065
6 - Spool Tube	JX801-006	21 - Cover Plate	JX801-021	36 - Drive Shaft Tube	JX801-036	51 - Handle Stem Washer	JX801-051	66 - C Spring Screw	JX801-066
7 - Clicker Gear Retainer Ring	JX801-007	22 - Stright Stop Spring (2 req.)	JX801-022	37 - Crank Arm Spacer	JX801-037	52 - Handle Tube washer (2 req.)	JX801-052	67 - C Spring	JX801-067
8 - Clicker Gear	JX801-008	23 - Stright Stop	JX801-023	38 - Lever Bushing	JX801-038	53 - Handle Tube	JX801-053	68 - Pin Washer	JX801-068
9 - Spool	JX801-009	24 - Untireverse Dog	JX801-024	39 - Lever Arm	JX801-039	54 - Lock Screw Nut	JX801-054	69 - Clicker Arm	JX801-069
10 - Brake Pad	JX801-010	25 - Dog Spring	JX801-025	40 - Lever Knob	JX801-040	55 - Handle Shoulder Bolt	JX801-055	70 - Pin E-Clip	JX801-070
11 - Brake Pad Retainer Ring	JX801-011	26 - Stop Pin (2 req.)	JX801-026	41 - Knob Screw	JX801-041	56 - Lock Screw Washer	JX801-056		
12 - Spool Bearing	JX801-012	27 - Stop Pin Screw (2 req.)	JX801-027	42 - Female Cam	JX801-042	57 - Lock Screw	JX801-057		
13 - Spool Spring Washer (2 req.)	JX801-013	28 - Shaft E-Clip	JX801-028	43 - Male Cam	JX801-043	58 - Handle Knob	JX801-058		
14 - Sool Spring	JX801-014	29 - Drive Gear	JX801-029	44 - O-Ring	JX801-044	59 - Rod Mount	JX801-059		
15 - Brake Bearing	JX801-015	30 - Small Gear (3req.)	JX801-030	45 - Preset Knob Spring	JX801-045	60 - Rod Mount Screw (4 req.)	JX801-060		