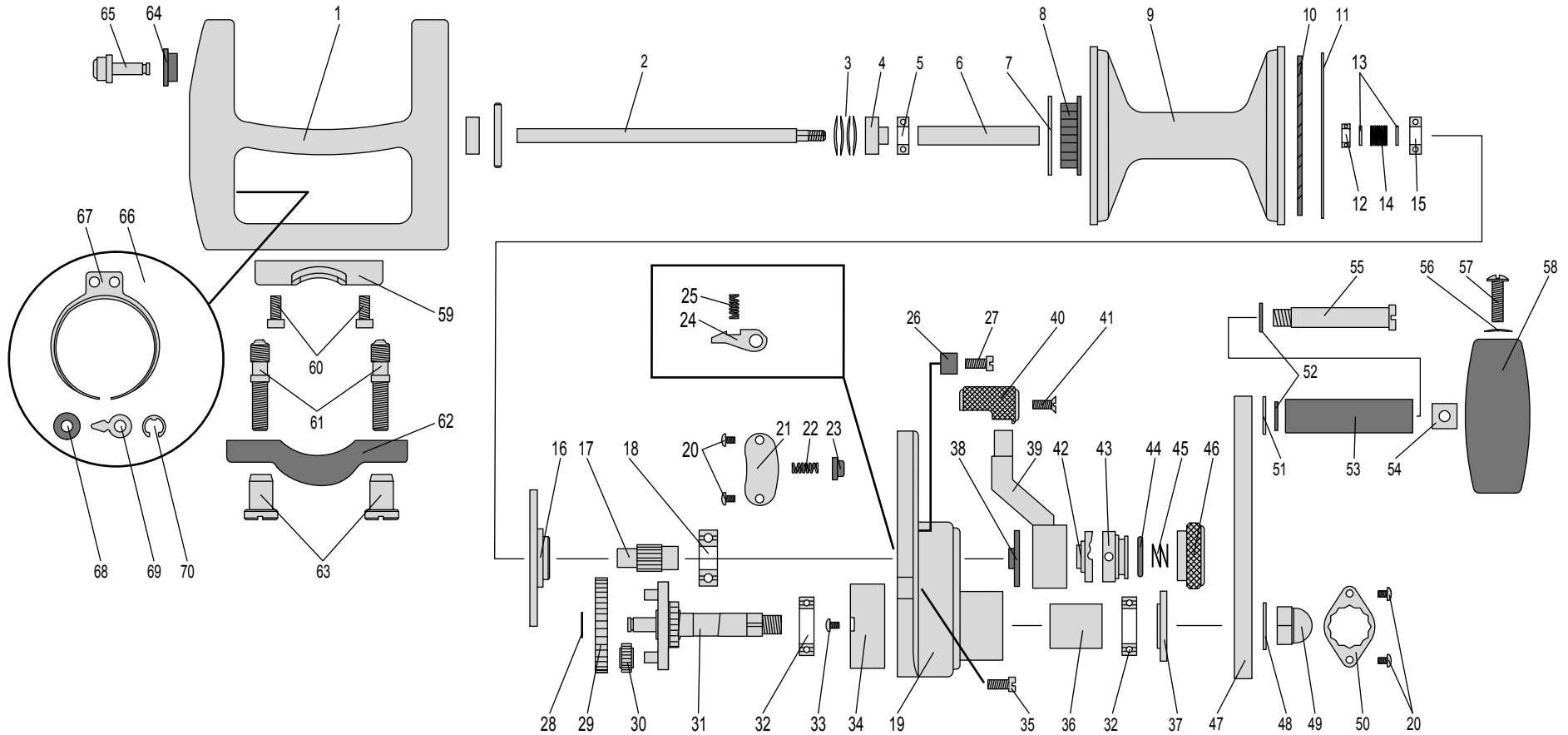


# Models LX - 8.0 Parts List



1 - Main Housing	LX801-001	16 - Brake Disk	LX801-016	31 - Drive Shaft	LX801-031	46 - Preset Knob	LX801-046	61 - Rod Mount Studs (2 req.)	LX801-061
2 - Spool Shaft	LX801-002	17 - Pinion Gear	LX801-017	32 - Drive Shaft Bearing (2 req.)	LX801-032	47 - Crank Arm	LX801-047	62 - Rod Mount Clamp	LX801-062
3 - Belleville Washers (4 req.)	LX801-003	18 - Pinion Bearing	LX801-018	33 - End Housing Screw (3 req.)	LX8401-033	48 - Crank Arm Washer	LX801-048	63 - Rod Mount Nut (2 req.)	LX801-063
4 - Pusher Bushing	LX801-004	19 - End Housing	LX801-019	34 - Gear Housing	LX801-034	49 - Acorn Nut	LX801-049	64 - Pin Support	LX801-064
5 - Spool Bearing	LX801-005	20 - Screw (4 req.)	LX801-020	35 - End Housing Screw	LX801-035	50 - Locking Plate	LX801-050	65 - Clicker Pin	LX801-065
6 - Spool Tube	LX801-006	21 - Cover Plate	LX801-021	36 - Drive Shaft Tube	LX801-036	51 - Handle Stem Washer	LX801-051	66 - C Spring Screw	LX801-066
7 - Clicker Gear Retainer Ring	LX801-007	22 - Stright Stop Spring (2 req.)	LX801-022	37 - Crank Arm Spacer	LX801-037	52 - Handle Tube washer (2 req.)	LX801-052	67 - C Spring	LX801-067
8 - Clicker Gear	LX801-008	23 - Stright Stop	LX801-023	38 - Lever Bushing	LX801-038	53 - Handle Tube	LX801-053	68 - Pin Washer	LX801-068
9 - Spool	LX801-009	24 - Untireverse Dog	LX801-024	39 - Lever Arm	LX801-039	54 - Lock Screw Nut	LX801-054	69 - Clicker Arm	LX801-069
10 - Brake Pad	LX801-010	25 - Dog Spring	LX801-025	40 - Lever Knob	LX801-040	55 - Handle Shoulder Bolt	LX801-055	70 - Pin E-Clip	LX801-070
11 - Brake Pad Retainer Ring	LX801-011	26 - Stop Pin (2 req.)	LX801-026	41 - Knob Screw	LX801-041	56 - Lock Screw Washer	LX801-056		
12 - Spool Bearing	LX801-012	27 - Stop Pin Screw (2 req.)	LX801-027	42 - Female Cam	LX801-042	57 - Lock Screw	LX801-057		
13 - Spool Spring Washer (2 req.)	LX801-013	28 - Shaft E-Clip	LX801-028	43 - Male Cam	LX801-043	58 - Handle Knob	LX801-058		
14 - Sool Spring	LX801-014	29 - Drive Gear	LX801-029	44 - O-Ring	LX801-044	59 - Rod Mount	LX801-059		
15 - Brake Bearing	LX801-015	30 - Small Gear (3req.)	LX801-030	45 - Preset Knob Spring	LX801-045	60 - Rod Mount Screw (4 req.)	LX801-060		