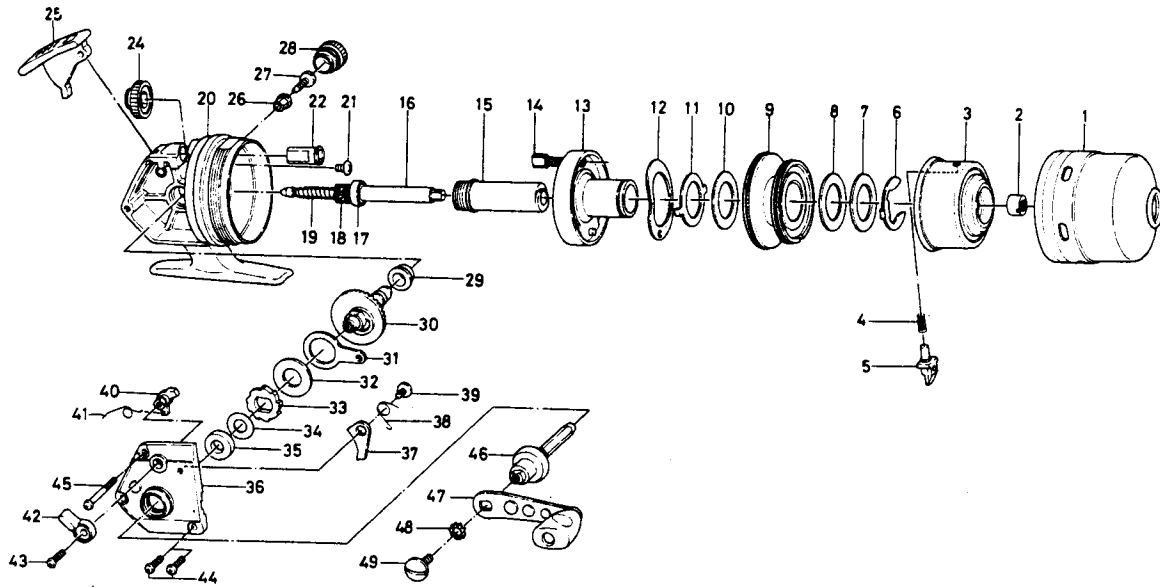


# SPINCASTING REEL 512RL



KEY NO. 3 ~ 5  
6-736-7801

## ROTOR ASSEMBLY

KEY NO. 16 ~ 19  
6-711-5301

## MAIN SHAFT ASSEMBLY

Key No.	Parts No.	Parts Name	Key No.	Parts No.	Parts Name
1	6-755-2402	Front cover	26	6-501-8501	Handle screw holder
2	6-342-4911	Rotor nut	27	6-363-8511	Handle screw A
3	6-736-7901	Rotor	28	6-803-4803	Handle screw cap
4	6-142-5111	Pick up pin spring	29	6-637-4801	Drive gear shaft holder
5	6-783-0201	Pick up pin	30	6-414-1901	Drive gear
6	6-321-1001	Spool retainer	31	6-481-3111	Oscillating slider
7	6-376-1901	Spool washer A	32	6-375-0502	Drive gear washer A
8	6-376-2101	Spool washer B	33	6-280-9301	Ratchet
9	6-734-3411	Spool	34	6-370-5100	Drive gear washer B
10	6-376-2101	Drag washer A	35	6-637-4511	Bearing metal
11	6-376-2001	Drag washer B	36	6-063-4003	Body cover
12	6-151-9101	Drag adjusting plate	37	6-111-7011	Anti-reverse claw
13	6-783-0132	Oscillating plate	38	6-144-5111	Anti-reverse claw spring
14	6-364-0531	Drag adjusting screw	39	6-351-7701	Anti-reverse claw screw
15	6-382-1821	Shaft metal	40	6-461-4501	Anti-reverse cam
16	6-394-1301	Main shaft	41	6-809-1401	Anti-reverse cam spring
17	6-633-8811	Ball bearing	42	6-541-3132	Anti-reverse lever
18	6-402-6701	Pinion gear	43	6-351-4701	Anti-reverse lever screw
19	6-142-7711	Main shaft spring	44	6-353-0001	Body cover screw (short)
20	6-701-5602	Body	45	6-353-4911	Body cover screw (long)
21	6-352-2201	Collar stopper screw	46	6-071-0504	Drive gear shaft
22	6-502-0101	Drag adjusting collar	47	6-747-8201	Handle
24	6-809-4401	Drag adjusting dial	48	6-160-8001	Handle washer
25	6-781-6508	Push button	49	6-363-5301	Handle screw B