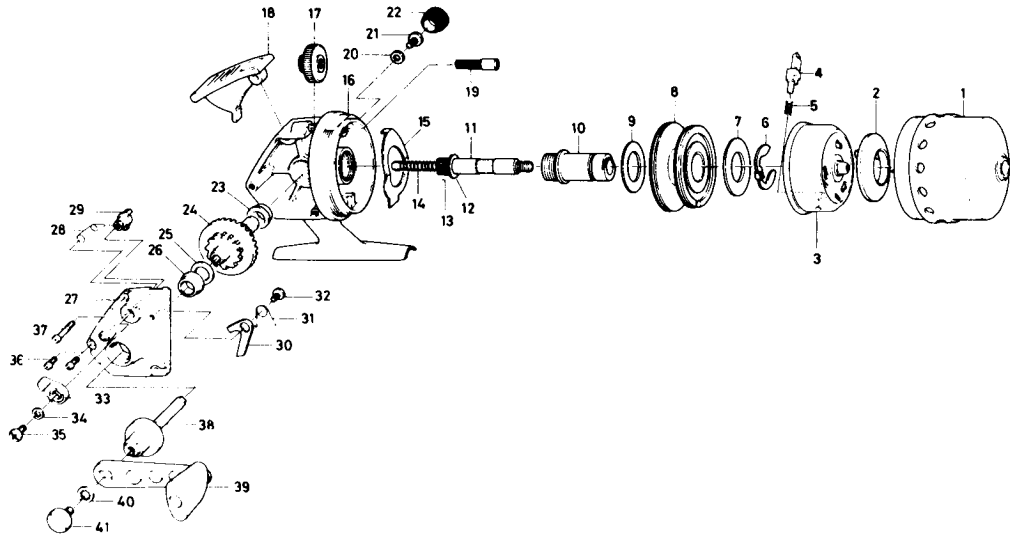


SPINCASTING REEL **Silvercast 210RL**



LINE CAPACITY: 80 YDS. 10 LB. TEST (70m. 4.5kg)

Key No. 2 ~ 5

6-736-5801 Rotor assembly \$4.20

Key No. 11 ~ 14

6-711-1721 Main shaft assembly 1.75

Key No.	Parts No.	Parts Name	Price Per Piece
1	6-755-0902	Front cover	\$4.20
2	6-330-4301	Line stopper	N/A
3	6-736-5901	Rotor	N/A
4	6-180-3502	Pick up pin	.50
5	6-142-4501	Pick up pin spring	.10
6	6-320-9101	Spool retainer	.40
7	6-370-0412	Spool washer	.10
8	6-732-1732	Spool	2.50
9	6-370-0412	Spool washer	.10
10	6-381-7601	Shaft metal	1.20
11	6-393-3911	Main shaft	N/A
12	6-370-0226	Pinion washer	.10
13	6-402-6401	Pinion gear	.75
14	6-142-7711	Main shaft spring	.10
15	6-151-6501	Drag adjusting plate	.40
16	6-700-8811	Body	5.00
17	6-636-5601	Drag adjusting dial	.70
18	6-781-6304	Push button	.95
19	6-363-5911	Drag adjusting screw	.20
20	6-372-4601	Handle washer A	.10
21	6-362-1001	Handle screw A	.25

Key No.	Parts No.	Parts Name	Price Per Piece
22	6-363-6001	Handle screw cap	\$.55
23	6-636-4101	Drive gear shaft holder	.40
24	6-413-5201	Drive gear	.80
25	6-370-5150	Drive gear washer	.10
26	6-636-4101	Drive gear shaft holder	.40
27	6-706-3901	Body cover	1.80
28	6-144-5001	Anti-reverse cam spring	.15
29	6-461-4501	Anti-reverse cam	.25
30	6-111-5601	Anti-reverse claw	.15
31	6-144-5111	Anti-reverse claw spring	.15
32	6-350-1931	Anti-reverse claw screw	.10
33	6-541-4511	Anti-reverse lever	.40
34	6-160-3111	Anti-reverse lever washer	.10
35	6-350-1931	Anti-reverse lever screw	.10
36	6-351-1101	Body cover screw (short)	.10
37	6-353-4911	Body cover screw (long)	.10
38	6-071-0501	Drive gear shaft	1.35
39	6-746-5201	Handle	2.05
40	6-160-3402	Handle washer B	.10
41	6-363-5301	Handle screw B	.40