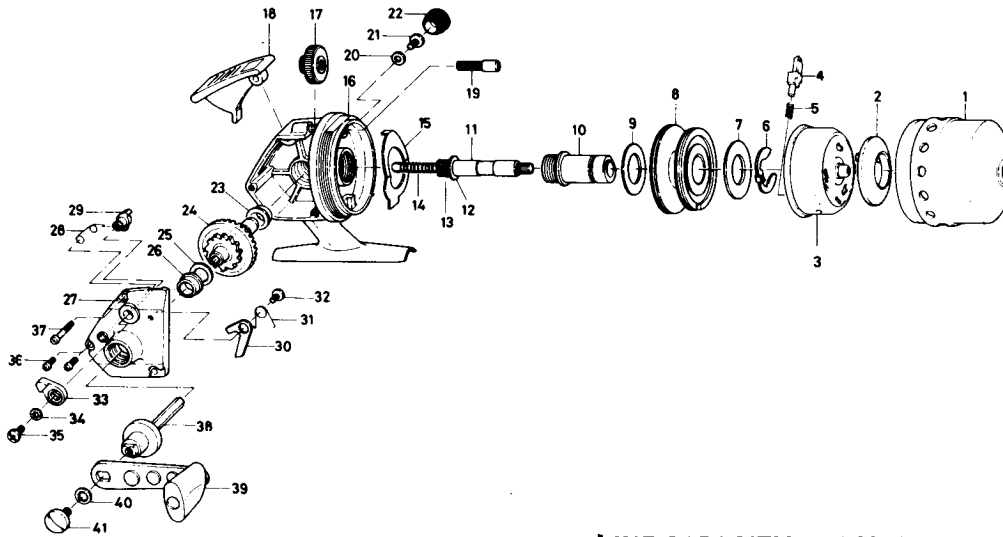


SPINCASTING REEL **Silvercast 212RL**



LINE CAPACITY: 100 YDS., 12 LB. TEST (90m. 5.5kg)

Key No. 2 ~ 5

6-736-6001 Rotor assembly \$4.25

Key No. 11 ~ 14

6-711-2001 Main shaft assembly 1.85

Key No.	Parts No.	Parts Name	Price Per Piece
1	6-755-1002	Front cover	\$4.20
2	6-330-4301	Line stopper	N/A
3	6-736-8001	Rotor	N/A
4	6-180-2612	Pick up pin	.50
5	6-142-4501	Pick up pin spring	.10
6	6-320-9101	Spool retainer	.40
7	6-370-0412	Spool washer	.10
8	6-732-2942	Spool	2.75
9	6-370-0412	Spool washer	.10
10	6-381-7831	Shaft metal	1.35
11	6-393-4301	Main shaft	N/A
12	6-370-0226	Pinion washer	.10
13	6-402-6701	Pinion	.75
14	6-142-7711	Main shaft spring	.10
15	6-151-6731	Drag adjusting plate	.40
16	6-700-9101	Body	5.25
17	6-636-5601	Drag adjusting dial	.70
18	6-781-6502	Push button	1.00
19	6-363-5911	Drag adjusting screw	.20
20	6-372-4601	Handle washer A	.10
21	6-362-1001	Handle screw A	.25

Key No.	Parts No.	Parts Name	Price Per Piece
22	6-363-6001	Handle screw cap	\$.55
23	6-636-4101	Drive gear shaft holder	.40
24	6-413-5501	Drive gear	.90
25	6-370-5150	Drive gear washer	.10
26	6-636-4101	Drive gear shaft holder	.40
27	6-706-4301	Body cover	2.00
28	6-144-5001	Anti-reverse cam spring	.15
29	6-461-4501	Anti-reverse cam	.25
30	6-111-5601	Anti-reverse claw	.15
31	6-144-5111	Anti-reverse claw spring	.15
32	6-350-1931	Anti-reverse claw screw	.10
33	6-541-4511	Anti-reverse lever	.40
34	6-160-3111	Anti-reverse lever washer	.10
35	6-350-1931	Anti-reverse lever screw	.10
36	6-351-1101	Body cover screw (short)	.10
37	6-353-4911	Body cover screw (long)	.10
38	6-071-0502	Drive gear shaft	1.85
39	6-746-5801	Handle	2.25
40	6-160-3402	Handle washer B	.10
41	6-363-5301	Handle screw B	.40