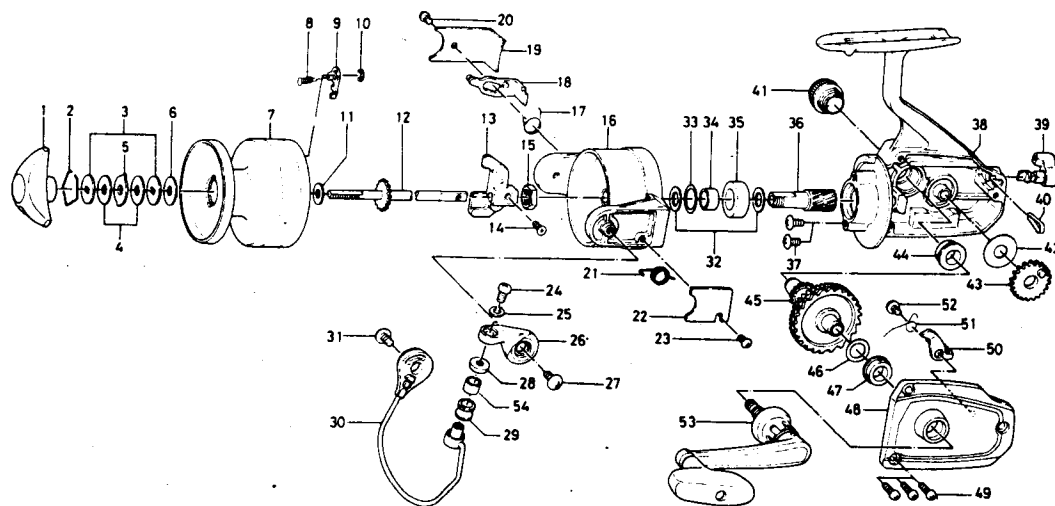


SPINNING REEL  
**APOLLO SILVER 250X**



Key No.	Parts No.	Parts Name	Key No.	Parts No.	Parts Name
1	6-740-2103	Drag knob	28	6-501-2001	Roller collar
2	6-170-4001	Drag washer retainer	29	6-250-4501	Line roller
3	6-373-2502	Drag D washer	30	6-B19-7701	Bail
4	6-374-2901	Disc washer	31	6-352-1103	Bail holder screw
5	6-375-5301	Drag A washer	32	6-371-2822	Pinion washer A
6	6-370-6901	Drag washer A	33	6-372-8600	Pinion washer B
7	6-734-1704	Spool	34	6-501-5101	Pinion collar
8	6-145-2101	Spool click claw spring	35	6-636-2611	Shaft metal
9	6-B07-8201	Spool click claw	36	6-402-4511	Pinion gear
10	6-320-1402	Spool click claw retainer	37	6-353-8202	Shaft metal screw
11	6-374-9001	Spool washer	38	6-B38-6701	Body
12	6-B19-7901	Main shaft	39	6-B18-4101	Anti-reverse lever
13	6-481-2211	Oscillating slider	40	6-B11-4301	Anti-reverse lever spring
14	6-351-8901	Oscillating slider screw	41	6-363-4703	Handle screw cap
15	6-B10-5701	Rotor nut	42	6-374-6600	Oscillating gear washer
16	6-B19-7102	Rotor	43	6-413-2212	Oscillating gear
17	6-B18-4701	Bail kick lever spring	44	6-B07-3301	Bearing metal
18	6-B19-7501	Bail kick lever	45	6-413-8401	Drive gear
19	6-B19-7601	Bail kick lever cover	46	6-371-2800	Drive gear washer
20	6-352-0402	Bail kick lever cover screw	47	6-B07-3301	Bearing metal
21	6-B19-7201	Bail spring	48	6-B38-6801	Body cover
22	6-B19-7401	Bail spring cover	49	6-351-5904	Body cover screw
23	6-352-0402	Bail spring cover screw	50	6-110-9622	Anti-reverse claw
24	6-B11-2801	Bail screw	51	6-144-2801	Anti-reverse claw spring
25	6-B11-2701	Bail washer	52	6-351-6102	Anti-reverse claw screw
26	6-B19-7301	Arm lever	53	6-747-1401	Handle
27	6-352-1103	Arm lever screw	54	6-502-1401	Roller metal