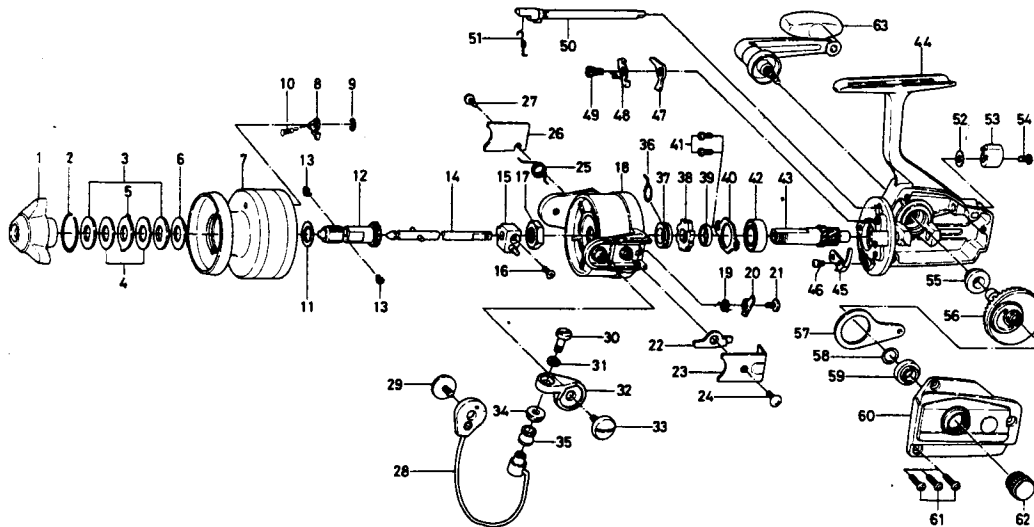


## SPINNING REEL REGAL D1300



| Key No. | Parts No.  | Parts Name                  | Key No. | Parts No.  | Parts Name                     |
|---------|------------|-----------------------------|---------|------------|--------------------------------|
| 1       | 6-740-3311 | Drag knob                   | 33      | 6-363-5201 | Arm lever screw                |
| 2       | 6-170-4601 | Drag washer retainer        | 34      | 6-501-1601 | Roller collar                  |
| 3       | 6-374-4802 | Drag D washer               | 35      | 6-250-4221 | Line roller                    |
| 4       | 6-373-3701 | Disc washer                 | 36      | 6-145-0901 | Anti-reverse claw spring       |
| 5       | 6-373-3603 | Drag A washer               | 37      | 6-501-9901 | Spring holder                  |
| 6       | 6-373-3704 | Drag washer A               | 38      | 6-280-9001 | Ratchet                        |
| 7       | 6-733-8907 | Spool                       | 39      | 6-501-9801 | Spacer                         |
| 8       | 6-B07-5302 | Spool click claw            | 40      | 6-321-0901 | Ball bearing ret. washer       |
| 9       | 6-320-5901 | Spool click claw retainer   | 41      | 6-351-0901 | Ball bearing ret. washer screw |
| 10      | 6-144-1211 | Spool click claw spring     | 42      | 6-635-4801 | Ball bearing                   |
| 11      | 6-375-5701 | Spool washer                | 43      | 6-403-2201 | Pinion gear                    |
| 12      | 6-720-1721 | Spool metal                 | 44      | 6-B38-2601 | Body                           |
| 13      | 6-151-7211 | Spool metal leaf spring     | 45      | 6-B22-3101 | Cam kick plate                 |
| 14      | 6-711-4601 | Main shaft                  | 46      | 6-351-6601 | Cam kick plate screw           |
| 15      | 6-637-0102 | Oscillating support         | 47      | 6-111-8201 | Anti-reverse claw              |
| 16      | 6-351-5311 | Oscillating slider screw    | 48      | 6-041-7101 | Anti-reverse claw plate        |
| 17      | 6-B10-5701 | Rotor nut                   | 49      | 6-363-9301 | Anti-reverse claw-screw        |
| 18      | 6-202-1036 | Rotor                       | 50      | 6-461-7104 | Anti-reverse cam               |
| 19      | 6-145-0701 | Bail kick cam spring        | 51      | 6-144-0321 | Anti-reverse cam spring        |
| 20      | 6-571-0821 | Bail kick cam               | 52      | 6-371-6903 | Anti-reverse lever washer      |
| 21      | 6-354-0701 | Bail kick cam screw         | 53      | 6-541-6801 | Anti-reverse lever             |
| 22      | 6-B26-3101 | Bail kick lever             | 54      | 6-353-4401 | Anti-reverse lever screw       |
| 23      | 6-041-7221 | Bail kick lever cover       | 55      | 6-637-4511 | Bearing metal                  |
| 24      | 6-351-7701 | Bail kick lever cover screw | 56      | 6-414-1312 | Drive gear                     |
| 25      | 6-145-1011 | Bail spring                 | 57      | 6-481-2101 | Oscillating slider             |
| 26      | 6-041-7301 | Bail spring cover           | 58      | 6-375-8500 | Drive gear washer              |
| 27      | 6-351-7701 | Bail spring cover screw     | 59      | 6-637-4511 | Bearing metal                  |
| 28      | 6-725-8111 | Bail                        | 60      | 6-B38-2701 | Body cover                     |
| 29      | 6-363-5201 | Bail holder screw           | 61      | 6-353-0001 | Body cover screw               |
| 30      | 6-353-1811 | Bail screw                  | 62      | 6-B03-4802 | Handle screw cap               |
| 31      | 6-375-1001 | Bail washer                 | 63      | 6-B15-8701 | Handle                         |
| 32      | 6-231-2901 | Arm lever                   |         |            |                                |