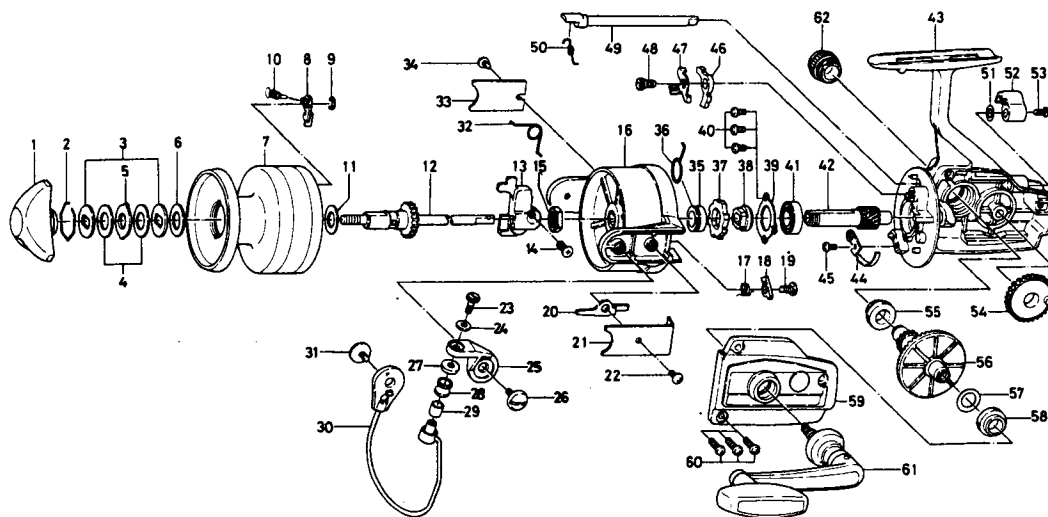


SPINNING REEL REGAL D7000



Key No.	Parts No.	Parts Name
1	6-000-8237	Drag knob
2	6-170-4511	Drag washer retainer
3	6-376-0101	Drag D washer
4	6-372-6504	Disc washer
5	6-375-5401	Drag A washer
6	6-372-3004	Drag washer A
7	6-805-8702	Spool
8	6-807-8201	Spool click claw
9	6-320-1402	Spool click claw retainer
10	6-145-2101	Spool click claw spring
11	6-372-9601	Spool washer
12	6-805-8101	Main shaft
13	6-807-6001	Oscillating slider
14	6-351-9001	Oscillating slider screw
15	6-810-5701	Rotor nut
16	6-805-7402	Rotor
17	6-145-3001	Bail kick cam spring
18	6-571-1101	Bail kick cam
19	6-353-8201	Bail kick cam screw
20	6-805-7501	Bail kick lever
21	6-805-7601	Bail kick lever cover
22	6-351-7701	Bail kick lever cover screw
23	6-363-3111	Bail screw
24	6-375-1101	Bail washer
25	6-231-3501	Arm lever
26	6-363-5201	Arm lever screw
27	6-501-2001	Roller collar
28	6-250-4501	Line roller
29	6-502-1401	Roller metal
30	6-805-7701	Bail
31	6-363-5201	Bail holder screw

Sold as one unit
Spool assembly
6-B05-8602

Key No.	Parts No.	Parts Name
32	6-B21-1801	Bail spring
33	6-634-6801	Bail spring cover
34	6-351-6101	Bail spring cover screw
35	6-502-1301	Spring holder
36	6-805-7301	Anti-reverse claw spring
37	6-B10-0901	Ratchet
38	6-636-6711	Click gear
39	6-050-5101	Ball bearing ret. washer
40	6-351-6601	Ball bearing ret. washer screw
41	6-635-5001	Ball bearing
42	6-805-6901	Pinion gear
43	6-B39-5201	Body
44	6-B22-9901	Cam kick plate
45	6-351-6601	Cam kick plate screw
46	6-8057101	Anti-reverse claw
47	6-801-5501	Anti-reverse claw plate
48	6-805-7201	Anti-reverse claw screw
49	6-B15-6401	Anti-reverse cam
50	6-144-0321	Anti-reverse cam spring
51	6-373-2700	Anti-reverse lever washer
52	6-541-7301	Anti-reverse lever
53	6-352-2501	Anti-reverse lever screw
54	6-808-1201	Oscillating gear
55	6-501-6101	Bearing metal
56	6-805-7901	Drive gear
57	6-371-2800	Drive gear washer
58	6-501-6101	Bearing metal
59	6-B39-5301	Body cover
60	6-353-6301	Body cover screw
61	6-805-8401	Handle
62	6-B07-4701	Handle screw cap