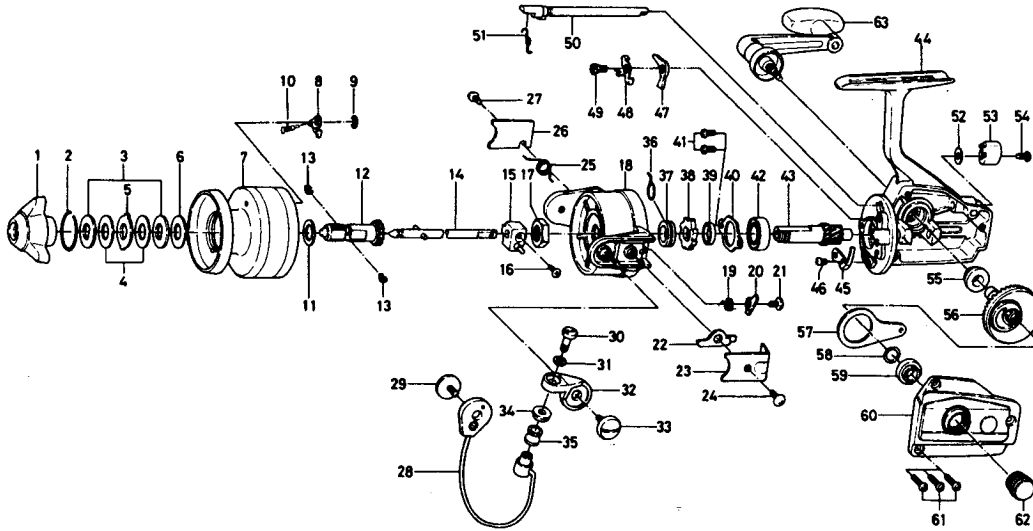


SPINNING REEL REGAL D1600



| Key No. | Parts No. | Parts Name | Key No. | Parts No. | Parts Name |
|---------|-----------|-----------------------------|---------|-----------|--------------------------------|
| 1 | 740-3801 | Drag knob | 33 | 363-5201 | Arm lever screw |
| 2 | 170-4601 | Drag washer retainer | 34 | 501-1601 | Roller collar |
| 3 | 374-4802 | Drag D washer | 35 | 250-4211 | Line roller |
| 4 | 373-3701 | Disc washer | 36 | 145-0901 | Anti-reverse claw spring |
| 5 | 373-3603 | Drag A washer | 37 | 501-9901 | Spring holder |
| 6 | 373-3704 | Drag washer A | 38 | 280-9001 | Ratchet |
| 7 | 733-9005 | Spool | 39 | 501-9801 | Spacer |
| 8 | B07-5302 | Spool click claw | 40 | 321-0901 | Ball bearing ret. washer |
| 9 | 320-5901 | Spool click claw retainer | 41 | 351-0901 | Ball bearing ret. washer screw |
| 10 | 144-1211 | Spool click claw spring | 42 | 635-4801 | Ball bearing |
| 11 | 375-5701 | Spool washer | 43 | 403-2201 | Pinion gear |
| 12 | 720-1721 | Spool metal | 44 | B38-2602 | Body |
| 13 | 151-7211 | Spool metal leaf spring | 45 | B22-3101 | Cam kick plate |
| 14 | 711-4601 | Main shaft | 46 | 351-6601 | Cam kick plate screw |
| 15 | 637-0102 | Oscillating support | 47 | 111-8201 | Anti-reverse claw |
| 16 | 351-5311 | Oscillating slider screw | 48 | 041-7101 | Anti-reverse claw plate |
| 17 | B10-5701 | Rotor nut | 49 | 363-9301 | Anti-reverse claw-screw |
| 18 | 202-1136 | Rotor | 50 | 461-7104 | Anti-reverse cam |
| 19 | 145-0701 | Bail kick cam spring | 51 | 144-0321 | Anti-reverse cam spring |
| 20 | 571-0821 | Bail kick cam | 52 | 371-6903 | Anti-reverse lever washer |
| 21 | 354-0701 | Bail kick cam screw | 53 | 541-6801 | Anti-reverse lever |
| 22 | B26-3101 | Bail kick lever | 54 | 353-4401 | Anti-reverse lever screw |
| 23 | 041-7221 | Bail kick lever cover | 55 | 637-4511 | Bearing metal |
| 24 | 351-7701 | Bail kick lever cover screw | 56 | 414-1312 | Drive gear |
| 25 | 145-1011 | Bail spring | 57 | 481-2101 | Oscillating slider |
| 26 | 041-7301 | Bail spring cover | 58 | 375-8500 | Drive gear washer |
| 27 | 351-7701 | Bail spring cover screw | 59 | 637-4511 | Bearing metal |
| 28 | 725-8111 | Bail | 60 | B38-2702 | Body cover |
| 29 | 363-5201 | Bail holder screw | 61 | 353-0001 | Body cover screw |
| 30 | 353-1811 | Bail screw | 62 | B03-4802 | Handle screw cap |
| 31 | 375-1001 | Bail washer | 63 | B15-8801 | Handle |
| 32 | 231-2901 | Arm lever | | | |