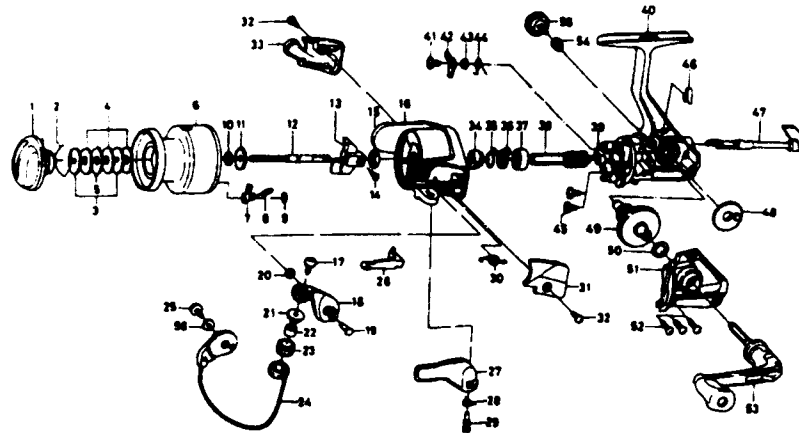


# SPINNING REEL REGAL RG-X2505B



Key No.	Parts No.	Parts Name	Key No.	Parts No.	Parts Name
2-9	F42-0601	Spool assembly	29	E41-7801	Trigger screw
1	F42-0901	Drag knob	30	F12-8901	Bail spring
2	F37-3301	Drag washer retainer	31	F31-0504	Bail spring cover
3	E46-7201	Key washer	32	E36-4202	Bail spring cover screw
4	E13-6001	Drag washer	33	F31-0604	Bail trip cover
5	373-3603	Eared washer	34	E49-2402	Anti-reverse ratchet
6	F42-0701	Spool	35	F38-4701	Anti-reverse pawl spring A
7	B07-5304	Click pawl	36	F37-5101	Spring holder
8	E40-3101	Click spring	37	L03-6601	Ball bearing
9	320-5901	Click retainer	38	F37-7501	Pinion gear
10	E46-7101	Spool washer	39	E24-3301	Pinion collar
11	270-6501	Click gear	40	F42-2601	Body assembly
12	F38-9601	Main shaft	41	L00-1801	Anti-reverse pawl screw
13	E45-1401	Oscillating slider	42	F37-5001	Anti-reverse pawl
14	351-0315	Oscillating slider screw	43	L01-4302	Anti-reverse pawl collar
15	341-9201	Rotor nut	44	L00-1501	Anti-reverse pawl spring B
16	F42-0801	Rotor assembly	45	E03-7801	Bearing retainer screw
17	B67-9306	Line roller screw	46	E32-7801	Anti-reverse cam spring
18	F17-9803	Bail arm	47	F08-5121	Anti-reverse lever
19	E49-3501	Bail arm screw	48	E45-1301	Oscillating gear
20	320-5901	Bail arm screw retainer	49	F17-0001	Drive gear
21	F06-6301	Line roller collar	50	373-7808	Drive gear washer
22	F31-6801	Line roller bushing	51	F42-2801	Side cover
23	E50-6001	Line roller	52	B00-9701	Side cover screw
24	F32-7401	Bail assembly	53	F42-0501	Handle assembly
25	B84-2102	Bail trip cam screw	54	F40-4801	Handle collar
26	E45-1601	Bail trip lever	55	B92-5006	Handle lock screw
27	F18-0003	Trigger lever			
28	E36-9901	Trigger spring			