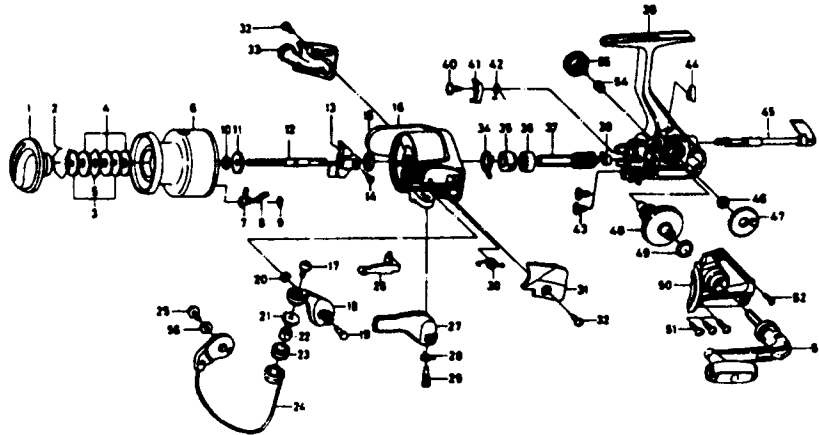


SPINNING REEL REGAL RG-X3505B



Key No.	Parts No.	Parts Name	Key No.	Parts No.	Parts Name
2-9	F42-1601	Spool assembly	32	E24-8101	Bail spring cover screw
1	F42-1901	Drag knob	33	F31-4604	Bail trip cover
2	F37-3301	Drag washer retainer	34	E46-2001	Anti-reverse pawl spring A
3	F09-4901	Key washer	35	F24-8901	Anti-reverse ratchet
4	E13-6001	Drag washer	36	L03-6502	Ball bearing
5	373-3603	Eared washer	37	F37-7601	Pinion gear
6	F42-1701	Spool	38	F32-1901	Pinion collar
7	B07-5304	Click pawl	39	F42-2701	Body assembly
8	E40-3101	Click spring	40	E00-7101	Anti-reverse pawl screw
9	320-5901	Click retainer	41	E46-1302	Anti-reverse pawl
10	F09-4701	Spool washer	42	E46-1201	Anti-reverse pawl spring B
11	E46-2701	Click gear	43	E03-7801	Bearing retainer screw
12	F39-1301	Main shaft	44	E32-7801	Anti-reverse cam spring
13	F09-1301	Oscillating slider	45	F08-5125	Anti-reverse lover
14	352-1502	Oscillating slider screw	46	F13-1601	Oscillating gear collar
15	340-6602	Rotor nut	47	F24-6601	Oscillating gear
16	F42-1801	Rotor assembly	48	E52-0201	Drive gear
17	B67-9306	Line roller screw	49	373-7802	Drive gear washer
18	F17-9803	Bail arm	50	F42-2901	Side cover
19	E49-3501	Bail arm screw	51	B83-5002	Side cover screw A
20	320-5901	Bail arm screw retainer	52	E15-8602	Side cover screw B
21	F06-6301	Line roller collar	53	F42-1501	Handle assembly
22	F31-6801	Line roller bushing	54	F40-4501	Handle collar
23	E50-6001	Line toller	55	B92-5006	Handle lock screw
24	F33-4001	Bail assembly			
25	BS4-2102	Bail trip cam screw			
26	E46-2101	Bail trip lever			
27	F18-0003	Trigger lever			
28	E36-9901	Trigger spring			
29	E41-7801	Trigger screw			
30	F12-8901	Bail spring			
31	F31-4504	Bail spring cover			