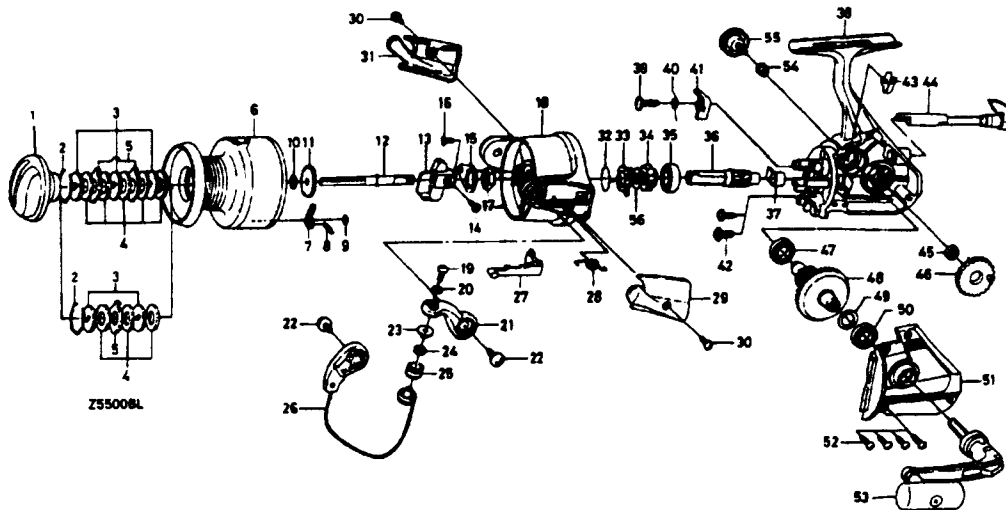


# SPINNING REEL REGAL RG-Z5500BL/REG-Z6000BL



Key No.	Parts No.	Parts Name
2-9	F43-8602	Spool assembly (Aluminum Spool)
	F42-5901	Spool assembly (Extra Spool)
1	F36-9803	Drag knob
2	171-7701	Drag washer retainer
3	L03-1301	Key washer
4	373-3712	Drag washer
5	B89-9501	Eared washer
6	L13-6403	Spool assembly
7	B07-8201	Click pawl
8	145-2101	Click spring
9	320-1402	Click retainer
10	F22-5501	Spool washer
11	L11-8501	Click gear
12	F42-9502	Main shaft
13	F42-9101	Oscillating slider
14	351-8901	Oscillating slider screw 1/2v
15	B02-1601	Rotor nut holding( plate
16	L01-1702	Rotor nut holding plate screw
17	340-8301	Rotor nut
18	F39-4403	Rotor
19	E45-4002	Line roller screw
20	160-8401	Lock washer
21	F39-4303	Bail arm
22	E00-7601	Bail arm screw
23	F08-8301	Line roller collar
24	F05-5601	Ball bearing A
25	F05-8901	Line roller
26	F40-4301	Bail assembly
27	F41-3401	Bail trip lever
28	F43-6401	Bail spring
29	F39-3303	Bail spring cover
30	E24-8101	Bail spring cover screw
31	F39-3403	Bail trip cover
32	F21-2001	Anti-reverse pawl spring A

Key No.	Parts No.	Parts Name
33	L07-0701	Anti-reverse pawl spring B
34	F39-4201	Anti-reverse ratchet
35	637-6101	Ball bearing 6
36	L11-4401	Pinion gear
37	L00-6001	Pinion collar
38	E53-5001	Body assembly
39	L06-6501	Anti-reverse pawl screw
40	L06-6401	Anti-reverse pawl spring C
41	L07-8601	Anti-reverse pawl
42	L01-1601	Bearing retainer screw
43	E01-1801	Anti-reverse cam spring
44	L10-0714	Anti-reverse lever
45	B47-4101	Oscillating gear collar
46	L11-4701	Oscillating gear
47	B54-6001	Ball bearing C
48	L07-1701	Drive gear
49	371-2821	Drive gear washer
50	B54-6001	Ball bearing D
51	E53-5401	Side cover
52	B83-5002	Side cover screw
53	E53-4801	Handle assembly
54	F40-9001	Handle collar
55	L00-9106	Handle lock screw
56	F43-1001	Ratchet washer

### RG-Z6000BL Special Parts

2-9	F43-2502	Spool assembly (Aluminum Spool)
	F43-2701	Spool assembly (Extra Spool)
18	F39-4703	Rotor assembly
26	F40-4401	Bail assembly
27	F39-3501	Bail trip lever
38	E53-5002	Body assembly
51	E53-5402	Side cover