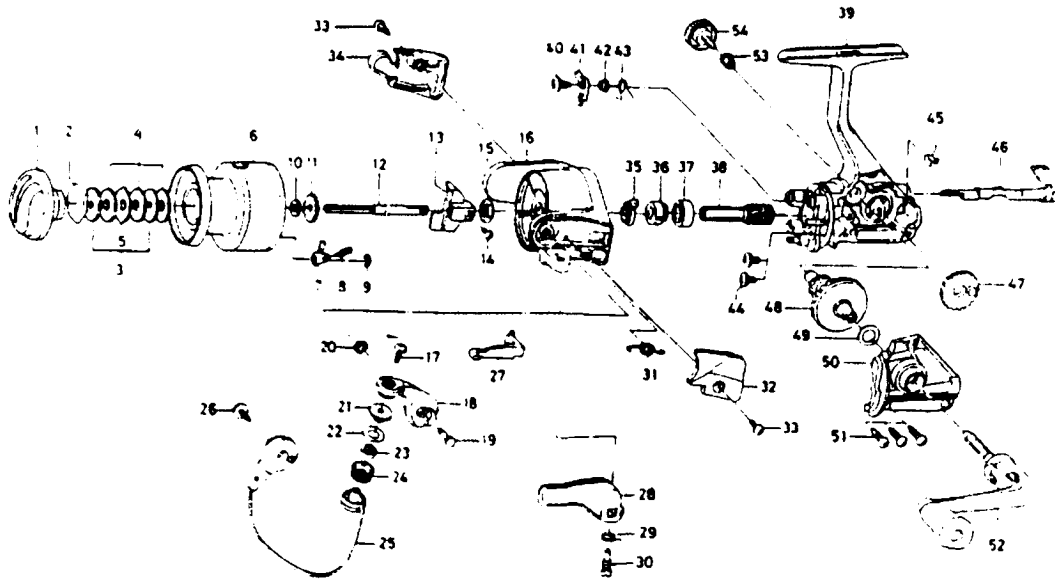


# SPINNING REEL REGAL-S1505MT/2005MT



Key No.	Parts No.	Parts Name	Key No.	Parts No.	Parts Name
2-9	F49-0602	Spool Assembly	33	F24-8101	Bail spring cover screw
1	F32-8507	Drag knob	34	F32-6507	Bail trip cover
2	F37-3301	Drag washer retainer	35	F12-2101	Anti-reverse pawl spring A
3	E46-7201	Key washer	36	E49-8501	Anti-reverse ratchet
4	E13-6001	Drag washer	37	634-1301	Ball bearing A
5	373-3603	Eared washer	38	F12-1601	Pinion gear
6	F49-0702	Spool assembly	39	F49-1001	Body assembly
7	B07-5304	Click pawl	40	F12-5701	Anti-reverse pawl screw
8	E40-3101	Click spring	41	F12-1901	Anti-reverse pawl
9	320-5901	Click retainer	42	F12-3501	Anti-reverse pawl collar
10	E46-7101	Spool washer	43	F12-3401	Anti-reverse pawl spring B
11	270-6501	Click gear	44	E03-7801	Bearing retainer screw
12	F46-0801	Main shaft	45	F12-2001	Anti-reverse cam spring
13	F12-2301	Oscillating slider	46	F08-5122	Anti-reverse lever
14	351-0311	Oscillating slider screw	47	F12-2201	Oscillating gear
15	341-9201	Rotor nut	48	F12-1501	Drive gear
16	F33-1407	Rotor assembly	49	375-8507	Drive gear washer
17	B67-9308	Line roller screw	50	F49-1101	Side cover
18	F47-3802	Bail arm	51	E15-8602	Side cover screw
19	E49-3501	Bail arm screw	52	F51-0101	Handle assembly
20	320-5901	Bail arm screw retainer	53	F40-4801	Handle collar
21	F44-6302	Line roller collar	54	B92-5011	Handle lock screw
22	F44-6201	Line roller washer			
23	F47-3401	Line roller bushing			
24	F45-4901	Line roller			
25	F49-0902	Bail assembly			
26	B84-2102	Bail trip cam screw			
27	E49-6401	Bail trip lever			
28	E49-3408	Trigger lever			
29	E36-9901	Trigger spring			
30	E37-0002	Trigger screw			
31	E49-6801	Bail spring			
32	F32-4107	Bail spring cover			

S2005MT SPECIAL PARTS		
Key No.	Parts No.	Parts Name
2-9	F49-2002	Spool assembly
6	F49-2102	Spool assembly
16	F39-9807	Rotor assembly
25	F49-2202	Bail assembly
27	E49-6501	Bail trip lever
39	F49-1002	Body assembly
50	F49-1102	Side cover