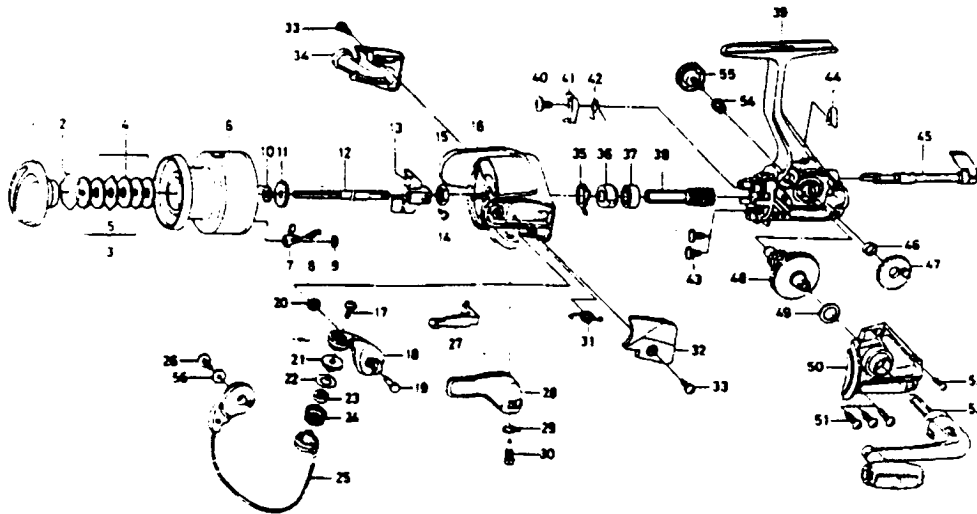


SPINNING REEL

REGAL-S3505MT



Key No.	Parts No.	Parts Name	Key No.	Parts No.	Parts Name
2-9	F49-3702	Spool assembly	29	E36-9901	Trigger spring
1	F42-1907	Drag knob	30	E41-7801	Trigger screw
2	F37-3301	Drag washer retainer	31	F12-8901	Bail spring
3	F09-4901	Key washer	32	F31-4507	Bail spring cover
4	E13-6001	Drag washer	33	E24-8101	Bail spring cover screw
5	373-3603	Eared washer	34	F31-4607	Bail trip cover
6	F48-3802	Spool assembly	35	E46-2001	Anti-reverse pawl spring A
7	B07-5304	Click pawl	36	F24-8901	Anti-reverse ratchet
8	E40-3101	Click spring	37	L03-6502	Ball bearing A
9	320-5901	Click retainer	38	E52-0101	Pinion gear
10	F09-4701	Spool washer	39	F49-2901	Body assembly
11	E46-2701	Click gear	40	E00-7101	Anti-reverse pawl screw
12	F48-0002	Main shaft	41	E46-1302	Anti-reverse pawl
13	F09-1301	Oscillating slider	42	E46-1201	Anti-reverse pawl spring B
14	352-1502	Oscillating slider screw	43	E03-7801	Bearing retainer screw
15	340-6602	Rotor nut	44	E32-7801	Anti-reverse cam spring
16	F42-1807	Rotor	45	F08-5124	Anti-reverse lever
17	B67-9309	Line roller screw	46	F13-1601	Oscillating gear collar
18	F45-2702	Bail arm	47	F24-6601	Oscillating gear
19	E49-3501	Bail arm screw	48	E52-0201	Drive gear
20	320-5901	Bail arm screw retainer	49	373-7805	Drive gear washer
21	F44-6302	Line roller collar	50	F49-3401	Side cover
22	F44-6271	Line roller washer	51	B83-5002	Side cover screw A
23	F47-3401	Line roller bushing	52	E15-8602	Side cover screw B
24	F45-4901	Line roller	53	F51-0601	Handle assembly
25	F49-4302	Bail assembly	54	F43-3501	Handle collar
26	B84-2102	Bail trip cam screw	55	B92-5011	Handle lock screw
27	E46-2101	Bail trip lever	56	F40-1001	Bail holder washer
28	F18-0006	Trigger lever			