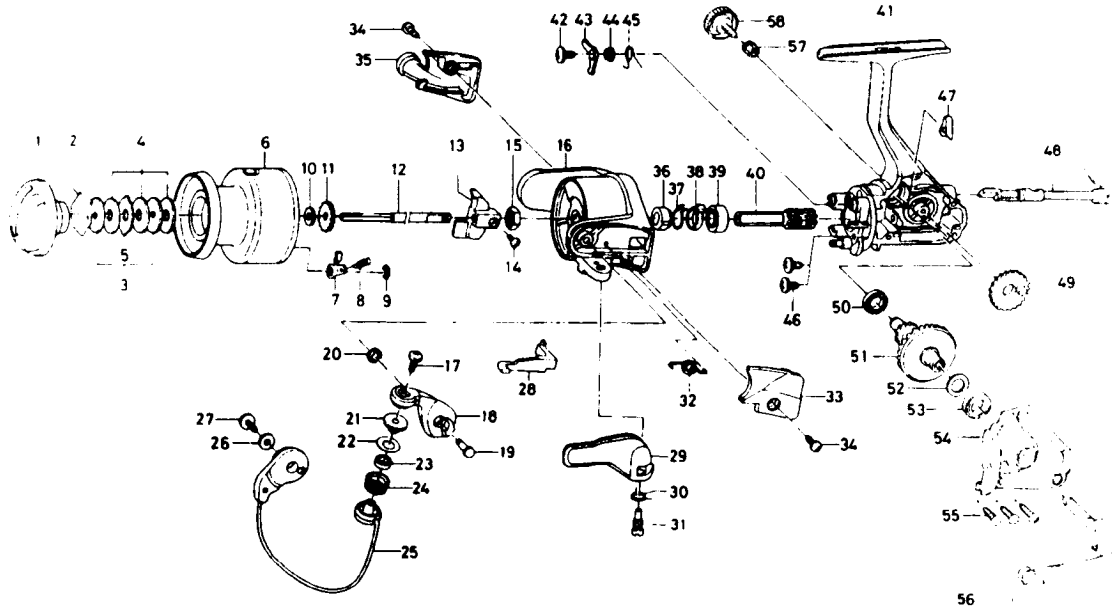


SPINNING REEL

REGAL-Z2505T



Key No.

Key No.	Parts No.	Parts Name
2-9	F47-1401	Spool assembly
1	F42-0905	Drag knob
2	F37-3301	Drag washer retainer
3	E46-7201	Key washer
4	E13-6001	Drag washer
5	373-3603	Eared washer
6	F47-1801	Spool assembly
7	B07-5304	Click pawl
8	E40-3101	Click spring
9	320-5901	Click retainer
10	E46-7101	Spool washer
11	270-6501	Click gear
12	F45-4502	Main shaft
13	E45-1401	Oscillating slider
14	351-0315	Oscillating slider screw
15	341-9201	Rotor nut
16	F42-0805	Rotor assembly
17	B67-9308	Line roller screw
18	F45-2701	Bail arm
19	E49-3501	Bail arm screw
20	320-5901	Bail arm screw retainer
21	F44-6302	Line roller collar
22	F44-6201	Line roller washer
23	F05-5601	Ball bearing A
24	F45-4902	Line roller
25	F47-1601	Bail assembly
26	F40-1001	Bail holder washer
27	B84-2102	Bail trip cam screw
28	E45-1601	Bail trip lever
29	F18-0005	Trigger lever

Key No.

Key No.	Parts No.	Parts Name
30	E36-9901	Trigger spring
31	E41-7801	Trigger screw
32	F12-8901	Bail spring
33	F31-0505	Bail spring cover
34	E36-4202	Bail spring cover screw
35	F31-0605	Bail trip cover
36	E49-2402	Anti-reverse ratchet
37	F38-4701	Anti-reverse pawl spring
38	F37-5101	Spring holder
39	L03-6601	Ball bearing B
40	E51-9801	Pinion gear
41	F46-1002	Body assembly
42	L00-1801	Anti-reverse pawl screw
43	F37-5001	Anti-reverse pawl
44	L01-4302	Anti-reverse pawl collar
45	L00-1501	Anti-reverse pawl spring
46	E03-7801	Bearing retainer screw
47	E32-7801	Anti-reverse cam spring
48	F08-5121	Anti-reverse lever
49	E45-1301	Oscillating gear
50	E30-6801	Ball bearing C
51	F17-0001	Drive gear
52	373-7805	Drive gear washer
53	631-6901	Ball bearing
54	F46-1802	Side cover
55	B83-5002	Side cover screw
56	F49-9601	Handle assembly
57	F40-4801	Handle collar
58	B92-5010	Handle lock screw

Parts Name
Trigger spring
Trigger screw
Bail spring
Bail spring cover
Bail spring cover screw
Bail trip cover
Anti-reverse ratchet
Anti-reverse pawl spring
Spring holder
Ball bearing B
Pinion gear
Body assembly
Anti-reverse pawl screw
Anti-reverse pawl
Anti-reverse pawl collar
Anti-reverse pawl spring
Bearing retainer screw
Anti-reverse cam spring
Anti-reverse lever
Oscillating gear
Ball bearing C
Drive gear
Drive gear washer
Ball bearing
Side cover
Side cover screw
Handle assembly
Handle collar
Handle lock screw