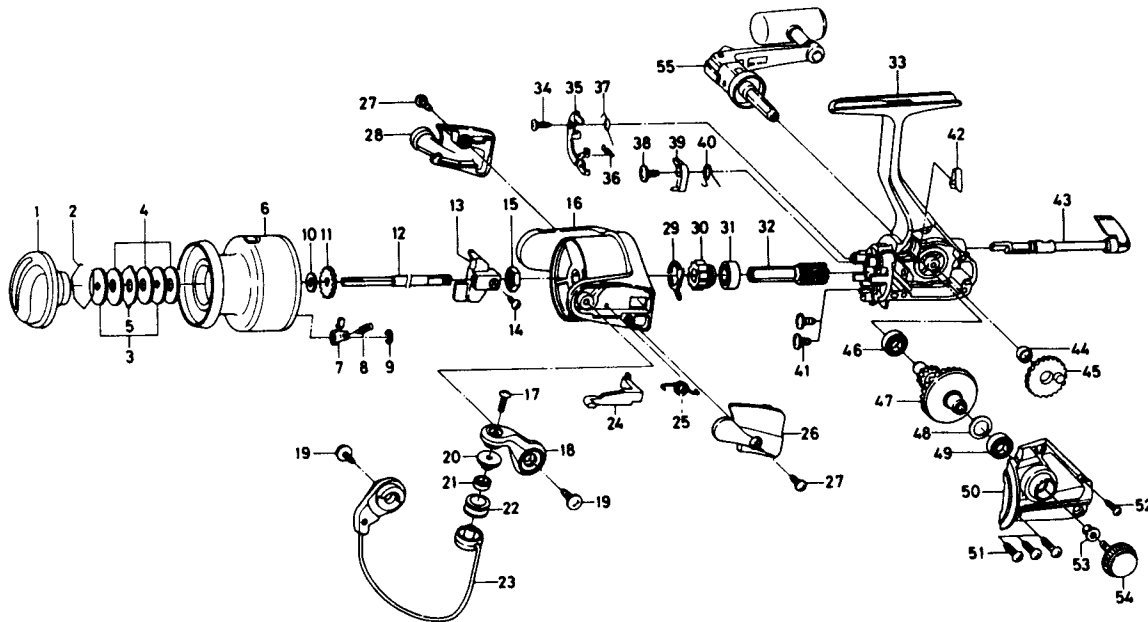


# SPINNING REEL REGAL-Z3500BL/4000BL



Key NO.	Parts No.	Parts Name	Key NO.	Parts No.	Parts Name
2-9	F33-8303	Spool assembly	32	E52-0101	Pinion gear
1	F28-7003	Drag knob	33	F37-9501	Body assembly
2	171-7701	Drag washer retainer	38	E00-7101	Anti-reverse pawl screw
3	F09-4901	Key washer	39	E46-1302	Anti-reverse pawl
4	E13-6003	Drag washer	40	E46-1201	Anti-reverse pawl spring B
5	373-3603	Eared washer	41	E03-7801	Bearing retainer screw
6	F33-8203	Spool assembly	42	E32-7801	Anti-reverse cam spring
7	B07-5304	Click pawl	43	F08-5125	Anti-reverse lever
8	E40-3101	Click spring	44	F13-1601	Oscillating gear collar
9	320-5901	Click retainer	45	F24-6601	Oscillating gear
10	F09-4701	Spool washer	46	631-6901	Ball bearing C
11	E46-2701	Click gear	47	E52-0201	Drive gear
12	E48-5301	Main shaft	48	373-7800	Drive gear washer
13	F09-1301	Oscillating slider	49	631-6901	Ball bearing C
14	352-1502	Oscillating slider screw	50	F37-9801	Side cover
15	340-6602	Rotor nut	51	B83-5002	Side cover screw A
16	F32-8803	Rotor	52	E15-8602	Side cover screw B
17	B67-9304	Line roller screw	53	E12-7501	Handle collar
18	F31-0203	Bail arm	54	F03-5605	Handle lock screw
19	B84-2102	Bail arm screw	55	F33-3401	Handle assembly
20	F06-6301	Line roller collar			
21	F05-5601	Ball bearing A			
22	F05-8901	Line roller			
23	F33-3301	Bail assembly			
24	E46-2101	Bail trip lever			
25	F12-8901	Bail spring			
26	F31-4303	Bail spring cover			
27	E24-8101	Bail spring cover screw			
28	F35-2403	Bail trip cover			
29	E46-2001	Anti-reverse pawl spring A			
30	F31-9701	Anti-reverse ratchet			
31	L03-6502	Ball bearing B			
			<b>Z4000BL Special parts</b>		
			2-9	F33-8503	Spool assembly
			6	F33-8403	Spool assembly
			16	F33-4503	Rotor
			23	F33-4701	Bail assembly
			24	E46-3101	Bail trip lever
			33	F37-9502	Body assembly
			50	F37-9802	Side cover