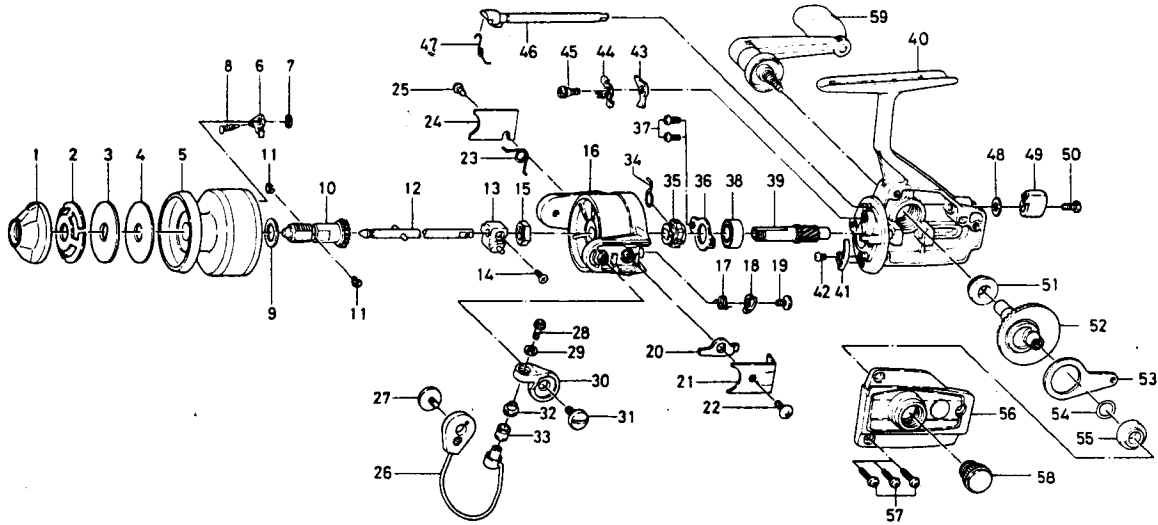


SPINNING REEL 1000X



KEY NO. 1 ~ 11 6-733-2005

SPOOL ASSEMBLY

Key No.	Parts No.	Parts Name
1	6-441-5301	Drag knob
2	6-151-7301	Drag spring washer
3	6-375-6001	Drag D washer
4	6-375-5902	Disc washer
5	6-733-8404	Spool
6	6-B07-5301	Spool click claw
7	6-320-5901	Spool click claw retainer
8	6-145-2101	Spool click claw spring
9	6-375-5701	Spool washer
10	6-381-8621	Spool metal
11	6-151-7211	Spool metal leaf spring
12	6-711-4202	Main shaft
13	6-636-7602	Oscillating support
14	6-B12-8201	Oscillating slider screw
15	6-341-9201	Rotor nut
16	6-202-0922	Rotor
17	6-145-0701	Bail kick cam spring
18	6-571-0611	Bail kick cam
19	6-354-0701	Bail kick cam screw
20	6-571-0501	Bail kick lever
21	6-041-7021	Bail kick lever cover
22	6-351-7701	Bail kick lever cover screw
23	6-145-2601	Bail spring
24	6-041-6901	Bail spring cover
25	6-351-7701	Bail spring cover screw
26	6-725-8011	Bail
27	6-363-4301	Bail holder screw
28	6-363-4411	Bail screw
29	6-375-4301	Bail washer
30	6-231-2821	Arm lever

Key No.	Parts No.	Parts Name
31	6-363-4301	Arm lever screw
32	6-501-4411	Roller collar
33	6-250-4411	Line roller
34	6-145-0501	Anti-reverse claw spring
35	6-280-8901	Ratchet
36	6-321-0801	Ball bearing ret. washer
37	6-351-0901	Ball bearing ret. washer screw
38	6-636-6401	Ball bearing
39	6-403-0701	Pinion gear
40	6-701-5103	Body
41	6-B22-3201	Cam kick plate
42	6-351-6601	Cam kick plate screw
43	6-111-8301	Anti-reverse claw
44	6-041-6801	Anti-reverse claw plate
45	6-363-8801	Anti-reverse claw screw
46	6-461-7302	Anti-reverse cam
47	6-145-2701	Anti-reverse cam spring
48	6-371-6903	Anti-reverse lever washer
49	6-541-6801	Anti-reverse lever
50	6-353-4401	Anti-reverse lever screw
51	6-637-4511	Bearing metal
52	6-414-0012	Drive gear
53	6-481-1801	Oscillating slider
54	6-637-4511	Bearing metal
55	6-375-8500	Drive gear washer
56	6-707-0301	Body cover
57	6-353-0001	Body cover screw
58	6-B03-4802	Handle screw cap
59	6-B15-8601	Handle