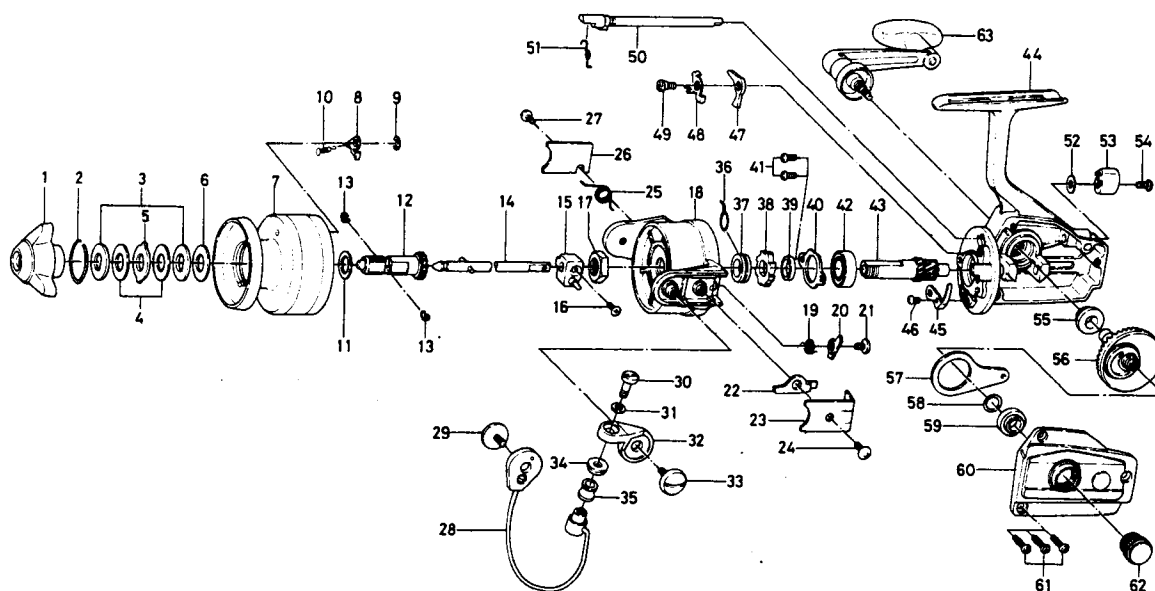


SPINNING REEL 1600X



KEY NO. 1 ~ 13 6-733-7904

SPOOL ASSEMBLY

Key No.	Parts No.	Parts Name
1	6-740-3801	Drag knob
2	6-170-4601	Drag washer retainer
3	6-374-4802	Drag D washer
4	6-373-3701	Disc washer
5	6-373-3603	Drag A washer
6	6-373-3704	Drag washer A
7	6-733-9004	Spool
8	6-807-5301	Spool click claw
9	6-320-5901	Spool click claw retainer
10	6-145-2101	Spool click claw spring
11	6-375-5701	Spool washer
12	6-720-1721	Spool metal
13	6-151-7211	Spool metal leaf spring
14	6-711-4601	Main shaft
15	6-637-0102	Oscillating support
16	6-351-5311	Oscillating slider screw
17	6-340-8301	Rotor nut
18	6-202-1135	Rotor
19	6-145-0701	Bail kick cam spring
20	6-571-0821	Bail kick cam
21	6-354-0701	Bail kick cam screw
22	6-821-3101	Bail kick lever
23	6-041-7221	Bail kick lever cover
24	6-351-7701	Bail kick lever cover screw
25	6-145-1011	Bail spring
26	6-351-7701	Bail spring cover screw
28	6-725-8111	Bail
29	6-363-5201	Bail holder screw
30	6-353-1811	Bail screw
31	6-375-1001	Bail washer
32	6-231-2901	Arm lever

Key No.	Parts No.	Parts Name
33	6-363-5201	Arm lever screw
34	6-501-1601	Roller collar
35	6-250-4211	Line roller
36	6-145-0901	Anti-reverse claw spring
37	6-501-9901	Spring holder
38	6-280-9001	Ratchet
39	6-501-9801	Spacer
40	6-321-0901	Ball bearing ret. washer
41	6-351-0901	Ball bearing ret. washer screw
42	6-635-4801	Ball bearing
43	6-403-2201	Pinion gear
44	6-701-5004	Body
45	6-822-3101	Cam kick plate
46	6-351-6601	Cam kick plate screw
47	6-111-8201	Anti-reverse claw
48	6-041-7101	Anti-reverse claw plate
49	6-363-9301	Anti-reverse claw-screw
50	6-461-7101	Anti-reverse cam
51	6-144-0321	Anti-reverse cam spring
52	6-371-6903	Anti-reverse lever washer
53	6-541-6801	Anti-reverse lever
54	6-353-4401	Anti-reverse lever screw
55	6-637-4511	Bearing metal
56	6-414-1312	Drive gear
57	6-481-2101	Oscillating slider
58	6-637-4511	Bearing metal
59	6-375-8500	Drive gear washer
60	6-707-0202	Body cover
61	6-353-0001	Body cover screw
62	6-803-4802	Handle screw cap
63	6-815-8801	Handle