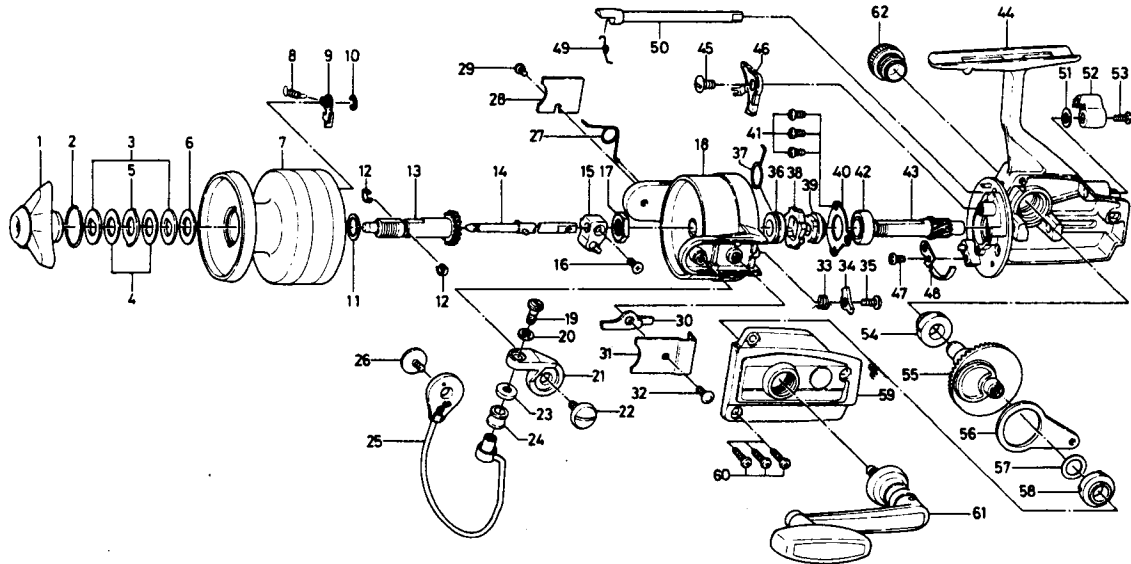


SPINNING REEL 2600X & 2600XSC



SPECIAL PARTS FOR 2600XSC

6-280-9602

RATCHET

Key No.	Parts No.	Parts Name
1	6-740-4401	Drag knob
2	6-170-4601	Drag washer retainer
3	6-376-4001	Drag D washer
4	6-375-7802	Disc washer
5	6-375-8002	Drag A washer
6	6-375-7803	Drag washer A
7	6-734-6303	Spool
8	6-145-2101	Spool click claw spring
9	6-B07-8201	Spool click claw
10	6-320-1402	Spool click claw retainer
11	6-376-3901	Spool washer
12	6-151-9501	Spool metal leaf spring
13	6-720-3101	Spool metal
14	6-711-5501	Main shaft
15	6-637-3001	Oscillating support
16	6-351-8901	Oscillating slider screw
17	6-340-8301	Rotor nut
18	6-202-1614	Rotor
19	6-363-3111	Bail screw
20	6-375-1101	Bail washer
21	6-231-3501	Arm lever
22	6-363-5201	Arm lever screw
23	6-501-2001	Roller collar
24	6-250-4321	Line roller
25	6-725-8513	Bail
26	6-363-5201	Bail holder screw
27	6-145-2001	Bail spring
28	6-041-8801	Bail spring cover
29	6-351-6101	Bail spring cover screw
30	6-571-1001	Bail kick lever
31	6-041-8101	Bail kick lever cover

Key No.	Parts No.	Parts Name
32	6-351-7701	Bail kick lever cover screw
33	6-145-0701	Bail kick cam spring
34	6-571-0901	Bail kick cam
35	6-351-4701	Bail kick cam screw
36	6-502-1301	Spring holder
37	6-145-2901	Anti-reverse claw spring
38	6-280-9501	Ratchet
39	6-636-6711	Click gear
40	6-635-9901	Ball bearing ret. washer
41	6-351-6601	Ball bearing ret. washer screw
42	6-635-4801	Ball bearing
43	6-403-2801	Pinion gear
44	6-701-5909	Body
45	6-352-1102	Anti-reverse claw screw
46	6-833-5601	Anti-reverse claw
47	6-351-6601	Cam kick plate screw
48	6-B22-9901	Cam kick plate
49	6-144-0321	Anti-reverse cam spring
50	6-B15-6403	Anti-reverse cam
51	6-373-2700	Anti-reverse lever washer
52	6-541-7301	Anti-reverse lever
53	6-352-2501	Anti-reverse lever screw
54	6-501-6101	Bearing metal
55	6-414-2302	Drive gear
56	6-481-2401	Oscillating slider
57	6-371-2800	Drive gear washer
58	6-501-6101	Bearing metal
59	6-707-0805	Body cover
60	6-351-5901	Body cover screw
61	6-478-1001	Handle
62	6-B16-1201	Handle screw cap