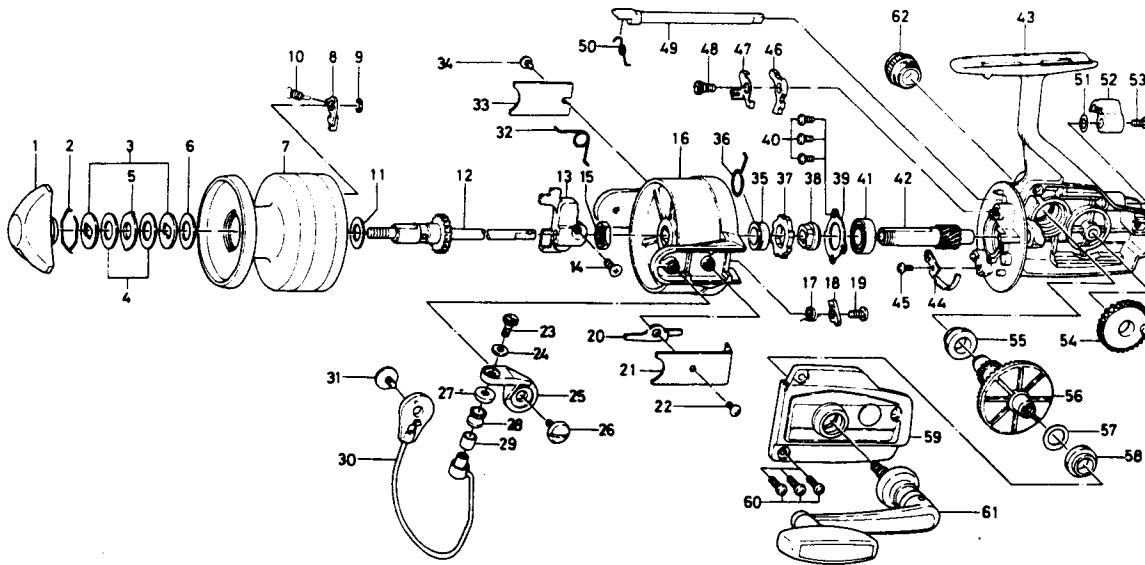


## SPINNING REEL 7000X



### KEY NO. 2 ~ 10 6-B05-8601

### SPOOL ASSEMBLY

| Key No. | Parts No.  | Parts Name                  |
|---------|------------|-----------------------------|
| 1       | 6-000-8237 | Drag knob                   |
| 2       | 6-170-4511 | Drag washer retainer        |
| 3       | 6-376-0101 | Drag D washer               |
| 4       | 6-372-6504 | Disc washer                 |
| 5       | 6-375-5401 | Drag A washer               |
| 6       | 6-372-3004 | Drag washer A               |
| 7       | 6-B05-8701 | Spool                       |
| 8       | 6-B07-8201 | Spool click claw            |
| 9       | 6-320-1402 | Spool click claw retainer   |
| 10      | 6-145-2101 | Spool click claw spring     |
| 11      | 6-372-9601 | Spool washer                |
| 12      | 6-B05-8101 | Main shaft                  |
| 13      | 6-B07-6001 | Oscillating slider          |
| 14      | 6-351-9001 | Oscillating                 |
| 15      | 6-B10-5701 | Rotor nut                   |
| 16      | 6-B05-7401 | Rotor                       |
| 17      | 6-145-3001 | Bail kick cam spring        |
| 18      | 6-571-1101 | Bail kick cam               |
| 19      | 6-353-8201 | Bail kick cam screw         |
| 20      | 6-B05-7501 | Bail kick lever             |
| 21      | 6-B05-7601 | Bail kick lever cover       |
| 22      | 6-351-7701 | Bail kick lever cover screw |
| 23      | 6-363-3111 | Bail screw                  |
| 24      | 6-375-1101 | Bail washer                 |
| 25      | 6-231-3501 | Arm lever                   |
| 26      | 6-363-5201 | Arm lever screw             |
| 27      | 6-501-2001 | Roller collar               |
| 28      | 6-250-4501 | Line roller                 |
| 29      | 6-502-1401 | Roller metal                |
| 30      | 6-B05-7701 | Bail                        |
| 31      | 6-363-5201 | Bail holder screw           |

| Key No. | Parts No.  | Parts Name                     |
|---------|------------|--------------------------------|
| 32      | 6-B21-1801 | Bail spring                    |
| 33      | 6-634-6801 | Bail spring cover              |
| 34      | 6-351-6101 | Bail spring cover screw        |
| 35      | 6-502-1301 | Spring holder                  |
| 36      | 6-B05-7301 | Anti-reverse claw spring       |
| 37      | 6-B10-0901 | Ratchet                        |
| 38      | 6-636-6711 | Click gear                     |
| 39      | 6-050-5101 | Ball bearing ret. washer       |
| 40      | 6-351-6601 | Ball bearing ret. washer screw |
| 41      | 6-635-5001 | Ball bearing                   |
| 42      | 6-B05-6901 | Pinion gear                    |
| 43      | 6-B05-6601 | Body                           |
| 44      | 6-B22-9901 | Cam kick plate                 |
| 45      | 6-351-6601 | Cam kick plate screw           |
| 46      | 6-B05-7101 | Anti-reverse claw              |
| 47      | 6-B01-5501 | Anti-reverse claw plate        |
| 48      | 6-B05-7201 | Anti-reverse claw screw        |
| 49      | 6-B15-6401 | Anti-reverse cam               |
| 50      | 6-144-0321 | Anti-reverse cam spring        |
| 51      | 6-373-2700 | Anti-reverse lever washer      |
| 52      | 6-541-7301 | Anti-reverse lever             |
| 53      | 6-352-2501 | Anti-reverse lever screw       |
| 54      | 6-B08-1201 | Oscillating gear               |
| 55      | 6-501-6101 | Bearing metal                  |
| 56      | 6-B05-7901 | Drive gear                     |
| 57      | 6-371-2800 | Drive gear washer              |
| 58      | 6-501-6101 | Bearing metal                  |
| 59      | 6-B05-8201 | Body cover                     |
| 60      | 6-353-6301 | Body cover screw               |
| 61      | 6-B05-8401 | Handle                         |
| 62      | 6-B07-4701 | Handle screw cap               |