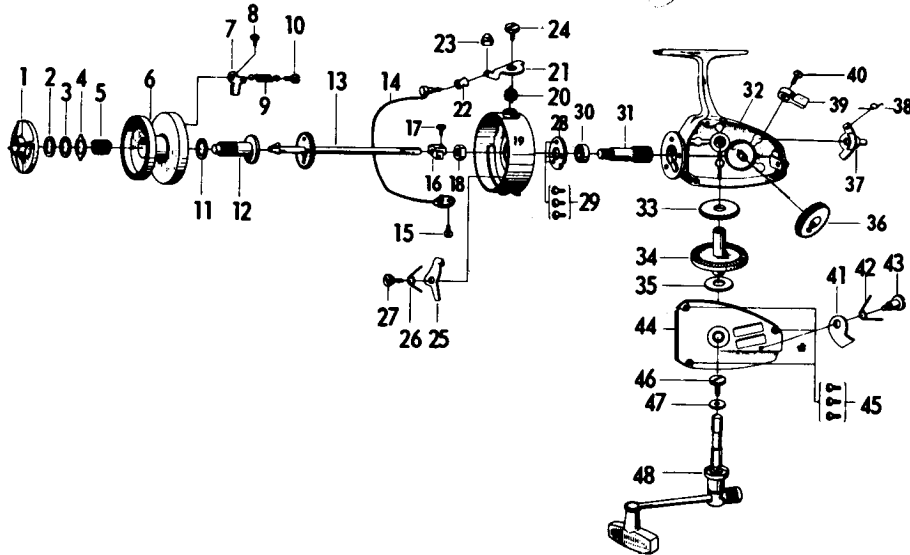
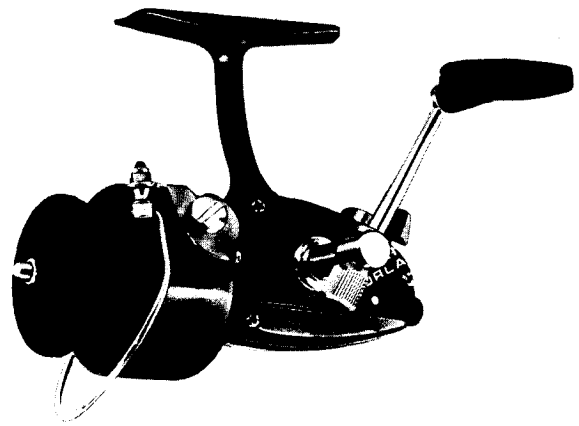




# DAIWA

## SPINNING REEL

## 7250HRLA



LINE CAPACITY: 300 YDS., 6 LB. TEST

| Key No. | Parts No.         | Parts Name              | Price                   | Key No. | Parts No.         | Parts Name                    | Price                               | Key No. | Parts No.         | Parts Name               | Price            |      |
|---------|-------------------|-------------------------|-------------------------|---------|-------------------|-------------------------------|-------------------------------------|---------|-------------------|--------------------------|------------------|------|
| 1       | 64409801 (4498)   | Drag knob               | Sold As One Unit \$6.00 | 17      | 63510311 (35103a) | Oscillating slider screw      | \$.50                               | 33      | 64006221 (4062)   | Oscillating pinion       | \$.50            |      |
| 2       | 63714711 (37147)  | Disc washer             |                         | 18      | 63412801 (34128)  | Rotor nut                     | .50                                 | 34      | 64118711 (A41187) | Driver gear              | 1.75             |      |
| 3       | 63731501 (37315)  | Washer                  |                         | 19      | 62009541 (2095)   | Rotor                         | 3.00                                | 35      | 63705151 (3751a)  | Drive gear washer        | .50              |      |
| 4       | 63731401 (37314)  | Washer                  |                         | 20      | 61410651 (14106)  | Bail spring                   | .50                                 | 36      | 60001821 (A0018)  | Oscillating gear         | .75              |      |
| 5       | 61418721 (14187)  | Spool spring            |                         | 21      | 62307311 (2373)   | Arm lever                     | .50                                 | 37      | 64606821 (4668)   | Anti-reverse cam         | .50              |      |
| 6       | 65119121 (51191)  | Spool                   |                         | 22      | 62501301 (2513)   | Line roller                   | .50                                 | 38      | 61422801 (14228)  | Anti-reverse cam spring  | .50              |      |
| 7       | 60401611 (0416)   | Click claw              |                         | 23      | 63412701 (34127)  | Bail nut                      | .50                                 | 39      | 65403711 (5437)   | Anti-reverse lever       | .50              |      |
| 8       | 63520601 (35206)  | Click claw screw        |                         | 24      | 63618521 (36185)  | Arm lever screw               | .50                                 | 40      | 63501931 (3519a)  | Anti-reverse lever screw | .50              |      |
| 9       | 61420001 (14200)  | Click claw spring       |                         | 25      | 65705911 (5759)   | Bail kick lever               | .50                                 | 41      | 61107001 (1170)   | Anti-reverse claw        | .50              |      |
| 10      | 63617402 (36174)  | Click claw spring screw |                         | 26      | 61422921 (14229)  | Bail kick lever spring        | .50                                 | 42      | 61423001 (14230)  | Anti-reverse claw spring | .50              |      |
| 11      | 63714901 (37149)  | Spool washer            |                         | 27      | 63618202 (36182)  | Bail kick lever screw         | .50                                 | 43      | 63618311 (36183)  | Anti-reverse claw screw  | .50              |      |
| 12      | 60052221 (A00522) | Spool metal             |                         | 28      | 66335501 (63355)  | Bail bearing retaining washer | .50                                 | 44      | 60616711 (06167)  | Body cover               | 1.75             |      |
| 13      | 60052121 (A00521) | Main shaft              |                         | 1.25    | 29                | 63501931 (3519a)              | Ball bearing retaining washer screw | .50     | 45                | 63517801 (35178)         | Body cover screw | .50  |
| 14      | 60052011 (A00520) | Bail                    |                         | 1.50    | 30                | 66316901 (63169)              | Ball bearing                        | 3.25    | 46                | 63515531 (35155)         | Handle screw     | .50  |
| 15      | 63516601 (35166)  | Bail holder screw       |                         | .50     | 31                | 64012911 (40129)              | Pinion                              | 1.00    | 47                | 63724601 (37246)         | Handle washer    | .50  |
| 16      | 64805811 (4858)   | Oscillating slider      |                         | .50     | 32                | 60051931 (A00519a)            | Body                                | 3.50    | 48                | 60001741 (A0017)         | Handle           | 3.50 |

ALWAYS SPECIFY MODEL NO., PART NAME & PARTS NO. WHEN ORDERING PARTS  
PLEASE ENCLOSE CORRECT AMOUNT FOR PART'S PRICE WHEN ORDERING