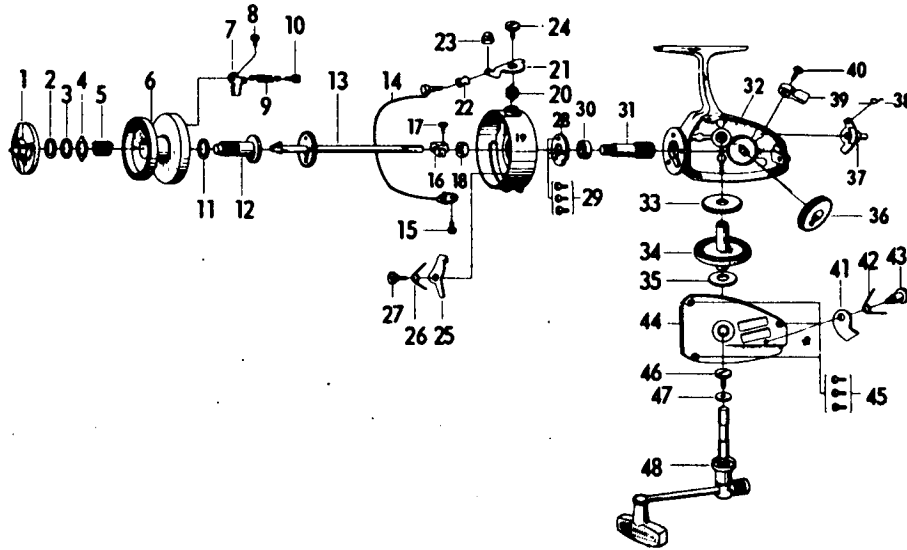




# SPINNING REEL 7250HRLA



LINE CAPACITY: 300 YDS., 6 LB. TEST (240m Dia. 0.23mm)

Key No.	Parts No.	Parts Name	Key No.	Parts No.	Parts Name
1	64409801	Drag knob	25	65705911	Bail kick lever
2	63714711	Disc washer	26	61422921	Bail kick lever spring
3	63731501	Washer	27	63618202	Bail kick lever screw
4	63731401	Washer	28	66335501	Ball bearing retaining washer
5	61418721	Spool spring	29	63501931	Ball bearing retaining, washer screw
6	65119121	Spool	30	66316901	Ball bearing
7	60401611	Click claw	31	64012911	Pinion
8	63520601	Click claw screw	32	60051931	Body
9	61420001	Click claw spring	33	64006221	Oscillating pinion
10	63617402	Click claw spring screw	34	64118711	Driver gear
11	63714901	Spool washer	35	63705151	Drive gear washer
12	60052221	Spool metal	36	60001821	Oscillating gear
13	60052121	Main shaft	37	64606821	Anti-reverse cam
14	60052011	Bail	38	61422801	Anti-reverse cam spring
15	63516601	Bail holder screw	39	65403711	Anti-reverse lever
16	64805811	Oscillating slider	40	63501931	Anti-reverse lever screw
17	63510311	Oscillating slider screw	41	61107001	Anti-reverse claw
18	63412801	Rotor nut	42	61423001	Anti-reverse claw spring
19	62009541	Rotor	43	63618311	Anti-reverse claw screw
20	61410651	Bail spring	44	60616711	Body cover
21	62307311	Arm lever	45	63517801	Body cover screw
22	62501301	Line roller	46	63515531	Handle screw
23	63412701	Bail nut	47	63724601	Handle washer
24	63618521	Arm lever screw	48	60001741	Handle

Sold  
As  
One  
Unit  
(60052331)