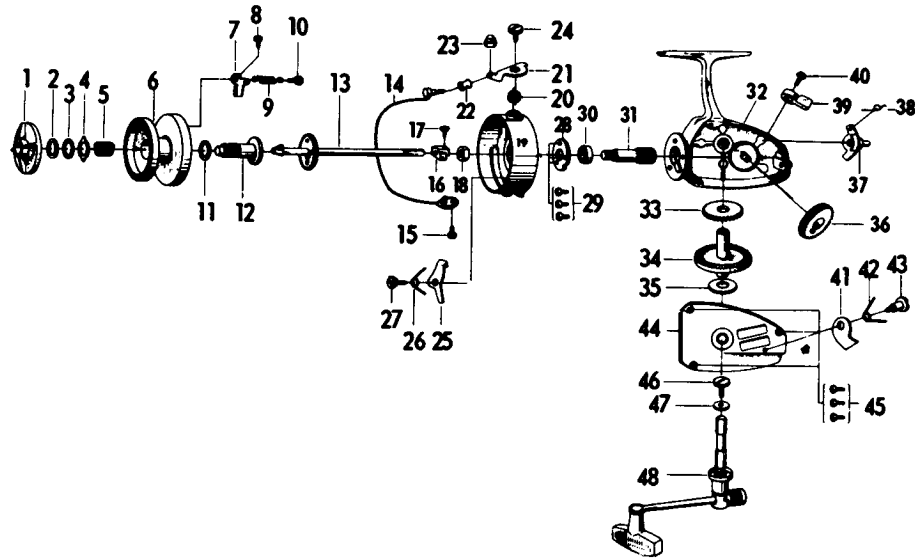


SPINNING REEL 7250HRLA



LINE CAPACITY: 300 YDS., 6 LB. TEST (270m. 2.7kg)

Key No.	Parts No.	Parts Name	Price Per Piece	Key No.	Parts No.	Parts Name	Price Per Piece
1	6-440-9801	Drag knob	\$.50	25	6-570-5911	Bail kick lever	\$.35
2	6-371-4711	Disc washer	.10	26	6-142-2921	Bail kick lever spring	.15
3	6-373-1501	Washer	.10	27	6-361-8202	Bail kick lever screw	.20
4	6-373-1401	Washer	.10	28	6-633-5501	Ball bearing retaining washer	.25
5	6-141-8721	Spool spring	.40	29	6-350-1931	Ball bearing retaining washer screw	.10
6	6-511-9121	Spool	N/A	30	6-631-6901	Ball bearing	2.80
7	6-040-1611	Click claw	.25	31	6-401-2911	Pinion	1.40
8	6-352-0601	Click claw screw	.10	32	6-005-1931	Body	5.75
9	6-142-0001	Click claw spring	.20	33	6-400-6221	Oscillating pinion	.55
10	6-361-7402	Click claw spring screw	.15	34	6-411-8711	Driver gear	2.15
11	6-371-4901	Spool washer	.10	35	6-370-5151	Drive gear washer	.10
12	6-005-2221	Spool metal	1.30	36	6-000-1821	Oscillating gear	.90
13	6-005-2121	Main shaft	1.50	37	6-460-6821	Anti-reverse cam	.25
14	6-005-2011	Bail	2.05	38	6-142-2801	Anti-reverse cam spring	.15
15	6-351-6601	Bail holder screw	.10	39	6-540-3711	Anti-reverse lever	.30
16	6-480-5811	Oscillating slider	.35	40	6-350-1931	Anti-reverse lever screw	.10
17	6-351-0311	Oscillating slider screw	.10	41	6-110-7001	Anti-reverse claw	.20
18	6-341-2801	Rotor nut	.25	42	6-142-3001	Anti-reverse claw spring	.10
19	6-200-9541	Rotor	3.75	43	6-361-8311	Anti-reverse claw screw	.25
20	6-141-0651	Bail spring	.15	44	6-061-6711	Body cover	1.90
21	6-230-7311	Arm lever	.45	45	6-351-7801	Body cover screw	.10
22	6-250-1301	Line roller	.40	46	6-351-5531	Handle screw	.25
23	6-341-2701	Bail nut	.30	47	6-372-4601	Handle washer	.10
24	6-361-8521	Arm lever screw	.50	48	6-000-1741	Handle	3.90