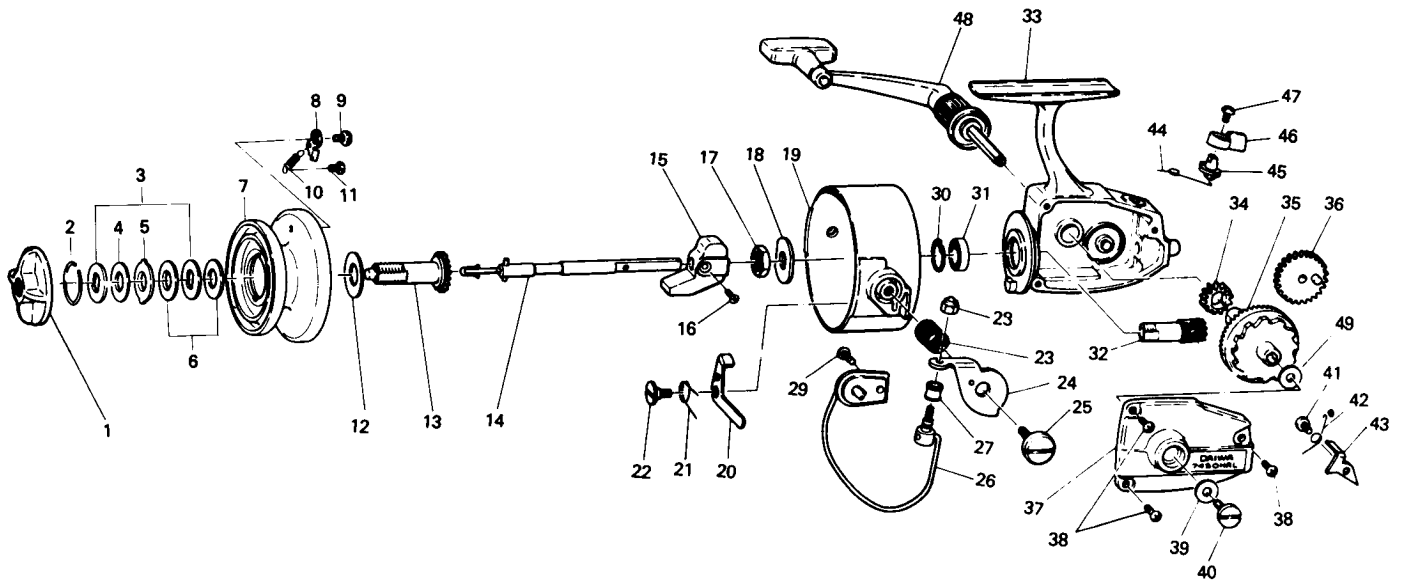


# SPINNING REEL 7450HRL



**LINE CAPACITY: 315 YDS 10 LB. TEST (290m. 4.5kg)**

Key No. 1 ~ 13

K-007-8632 Spool assembly \$4.50

Key No.	Parts No.	Parts Name	Price Per Piece	Key No.	Parts No.	Parts Name	Price Per Piece
1	6-007-8414	Drag knob	\$1.90	26	6-007-6201	Bail	\$2.25
2	6-170-4601	Drag washer retainer	.10	27	6-250-1901	Line roller	.30
3	6-373-3501	Drag D washer	.15	28	6-340-9101	Bail nut	.45
4	6-373-3701	Disc washer	.25	29	6-351-6401	Bail holder screw	.10
5	6-373-3601	Drag A washer	.10	30	6-320-2911	Ball bearing ret. ring	.25
6	6-373-3411	Drag washer A	.20	31	6-631-6901	Ball bearing	2.80
7	6-512-1321	Spool	N/A	32	6-401-3901	Pinion gear	1.60
8	6-040-1021	Spool click claw	.25	33	6-007-6151	Body	4.50
9	6-352-0601	Spool click claw screw	.10	34	6-401-3701	Oscillating pinion	.70
10	6-142-0011	Spool click claw spring	.15	35	6-412-0211	Drive gear	1.95
11	6-361-7402	Spool click claw spring screw	.15	36	6-401-4801	Oscillating gear	1.00
12	6-375-5701	Spool washer	.10	37	6-007-6501	Body cover	1.80
13	6-007-8561	Spool metal	1.20	38	6-351-6401	Body cover screw	.10
14	6-007-6461	Main shaft	.80	39	6-372-4601	Handle washer	.10
15	6-480-6301	Oscillating slider	.40	40	6-351-5531	Handle screw	.25
16	6-352-1501	Oscillating slider screw	.10	41	6-350-1931	Anti-reverse claw screw	.10
17	6-340-5842	Rotor nut	.25	42	6-142-5411	Anti-reverse claw spring	.10
18	6-372-9202	Rotor retaining washer	.25	43	6-110-7401	Anti-reverse claw	.25
19	6-201-7911	Rotor	3.50	44	6-142-2801	Anti-reverse cam spring	.15
20	6-570-6411	Bail kick lever	.45	45	6-460-6821	Anti-reverse cam	.25
21	6-142-5321	Bail kick lever spring	.10	46	6-540-3711	Anti-reverse lever	.30
22	6-363-1501	Bail kick lever screw	.20	47	6-350-1931	Anti-reverse lever screw	.10
23	6-140-9231	Bail spring	.15	48	6-007-6653	Handle	4.25
24	6-230-8301	Arm lever	.50	49	6-370-5150	Drive gear washer	.10
25	6-361-6413	Arm lever screw	.65				