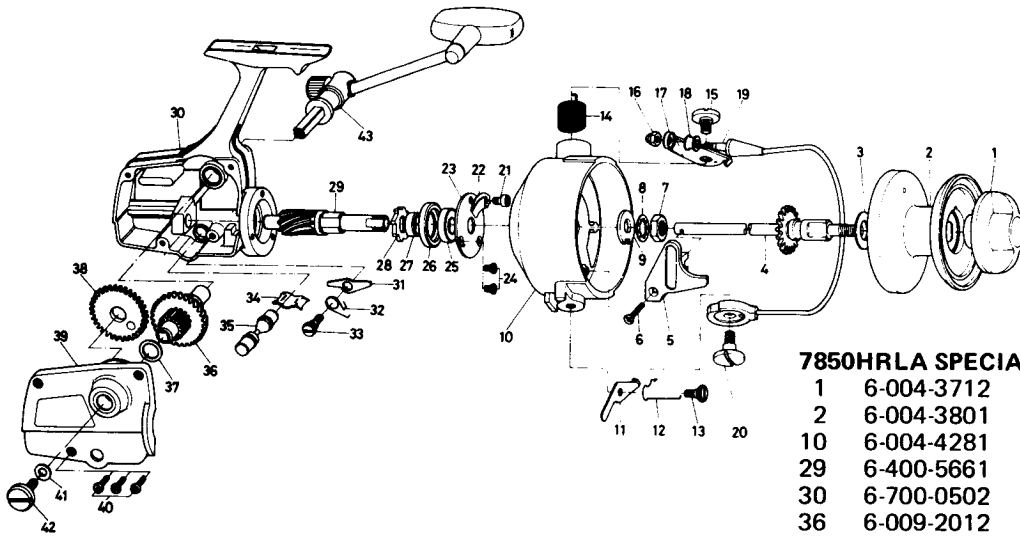


SPINNING REEL

7850RLA
7850HRLA



7850HRLA SPECIAL PARTS

1	6-004-3712	Drag knob	\$2.70
2	6-004-3801	Spool assembly	5.50
10	6-004-4281	Rotor	5.80
29	6-400-5661	Pinion	3.50
30	6-700-0502	Body	8.10
36	6-009-2012	Drive gear	5.90
39	6-009-1905	Body cover	3.40
43	6-009-1701	Handle	4.80

LINE CAPACITY: 300 YDS., 20 LB. TEST (270m. 9.1kg)

Key No.	Parts No.	Parts Name	Price Per Piece
1	6-004-3712	Drag knob	\$2.70
2	6-004-3801	Spool assembly	5.50
3	6-374-6301	Spool washer	.10
4	6-001-4341	Main shaft	1.85
5	6-480-6821	Oscillating slider	.60
6	6-353-1401	Oscillating slider screw	.10
7	6-340-4601	Rotor nut	.20
8	6-160-1711	Rotor washer	.10
9	6-371-3911	Rotor retaining washer	.15
10	6-004-4281	Rotor	5.80
11	6-570-3041	Bail kick lever	.40
12	6-140-9921	Bail kick lever spring	.20
13	6-362-2802	Bail kick lever screw	.25
14	6-140-9611	Bail spring	.20
15	6-362-3001	Arm lever screw	.70
16	6-340-8501	Bail nut	.40
17	6-230-2241	Arm lever	1.50
18	6-250-1501	Line roller	.40
19	6-004-4131	Bail	3.45
20	6-362-2901	Bail holder screw	1.10
21	6-362-2601	Cushion spring retaining screw	.20
22	6-150-3811	Cushion spring	.25

Key No.	Parts No.	Parts Name	Price Per Piece
23	6-630-3801	Ball bearing ret. washer	\$.35
24	6-352-0901	Ball bearing ret. screw	.10
25	6-633-1001	Ball bearing	4.25
26	6-634-3601	Adjust ring	.50
27	6-500-1213	Pinion collar	.35
28	6-280-1011	Ratchet	.30
29	6-400-9261	Pinion	3.50
30	6-700-0501	Body	8.10
31	6-110-1921	Anti-reverse claw	.20
32	6-140-9821	Anti-reverse claw spring	.10
33	6-360-7231	Anti-reverse claw screw	.20
34	6-150-3721	Anti-reverse lever spring	.40
35	6-540-2141	Anti-reverse lever	.70
36	6-009-2001	Drive gear	5.90
37	6-371-6420	Drive gear washer	.10
38	6-009-1801	Oscillating bull gear	1.35
39	6-009-1904	Body cover	3.40
40	6-351-5901	Body cover screw	.10
41	6-371-8331	Handle washer	.10
42	6-362-2701	Handle screw	.55
43	6-009-1701	Handle	4.80