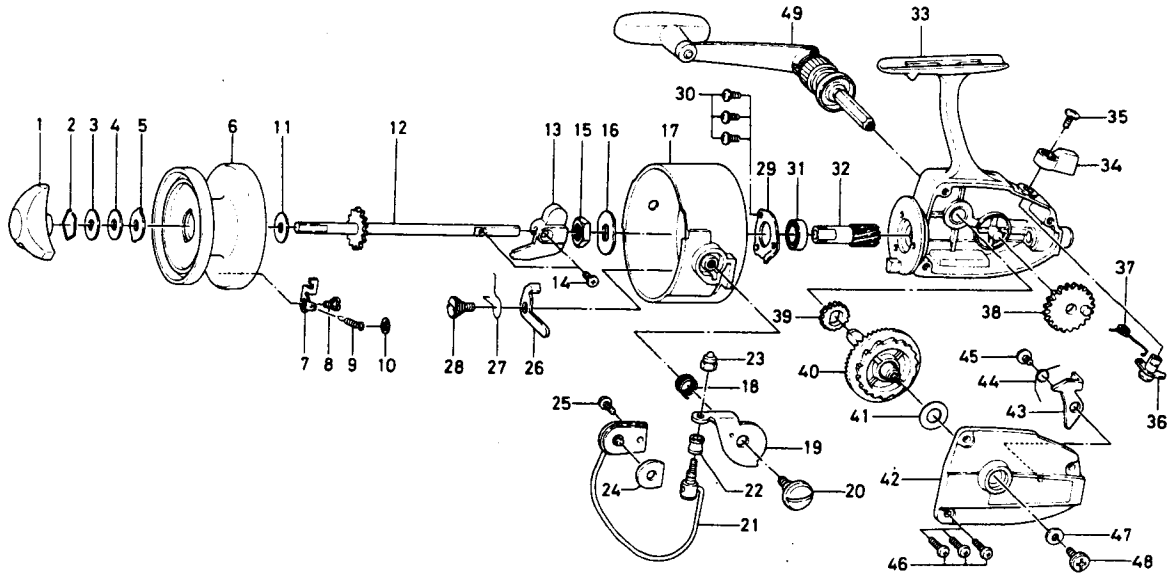


SPINNING REEL 8650HRL



KEY NO. 2 ~ 10
6-734-2701

SPOOL ASSEMBLY

Key No.	Parts No.	Parts Name
1	6-005-1805	Drag knob
2	6-170-4001	Drag washer retainer
3	6-372-0801	Drag D washer
4	6-370-6901	Disc washer
5	6-375-5302	Drag A washer
6	6-734-2601	Spool
7	6-030-6802	Spool click claw
8	6-363-8401	Spool click claw screw
9	6-140-2221	Spool click claw spring
10	6-320-9701	Spool click claw spring retainer
11	6-371-2731	Spool washer
12	6-710-0711	Main shaft
13	6-480-6911	Oscillating slider
14	6-351-8901	Oscillating slider screw
15	6-340-8301	Rotor nut
16	6-372-4901	Rotor retaining washer
17	6-201-7314	Rotor
18	6-141-2801	Bail spring
19	6-230-8411	Arm lever
20	6-361-6413	Arm lever screw
21	6-725-0231	Bail
22	6-250-2821	Line roller
23	6-340-8501	Bail nut
24	6-210-4301	Balancer
25	6-351-6401	Bail holder screw

Key No.	Parts No.	Parts Name
26	6-570-6821	Bail kick lever
27	6-140-6231	Bail kick lever spring
28	6-363-1501	Bail kick lever screw
29	6-320-6201	Ball bearing ret. washer
30	6-351-6102	Ball bearing ret. washer screw
31	6-635-5001	Ball bearing
32	6-401-4901	Pinion gear
33	6-700-0427	Body
34	6-540-3711	Anti-reverse lever
35	6-350-1931	Anti-reverse lever screw
36	6-460-6821	Anti-reverse cam
37	6-142-2801	Anti-reverse cam spring
38	6-412-1411	Oscillating gear
39	6-401-1701	Oscillating pinion
40	6-412-1501	Drive gear
41	6-370-7500	Drive gear washer
42	6-705-0215	Body cover
43	6-110-8511	Anti-reverse claw
44	6-142-8001	Anti-reverse claw spring
45	6-350-2621	Anti-reverse claw screw
46	6-351-8501	Body cover screw
47	6-371-9521	Handle washer
48	6-351-3631	Handle screw
49	6-745-0541	Handle