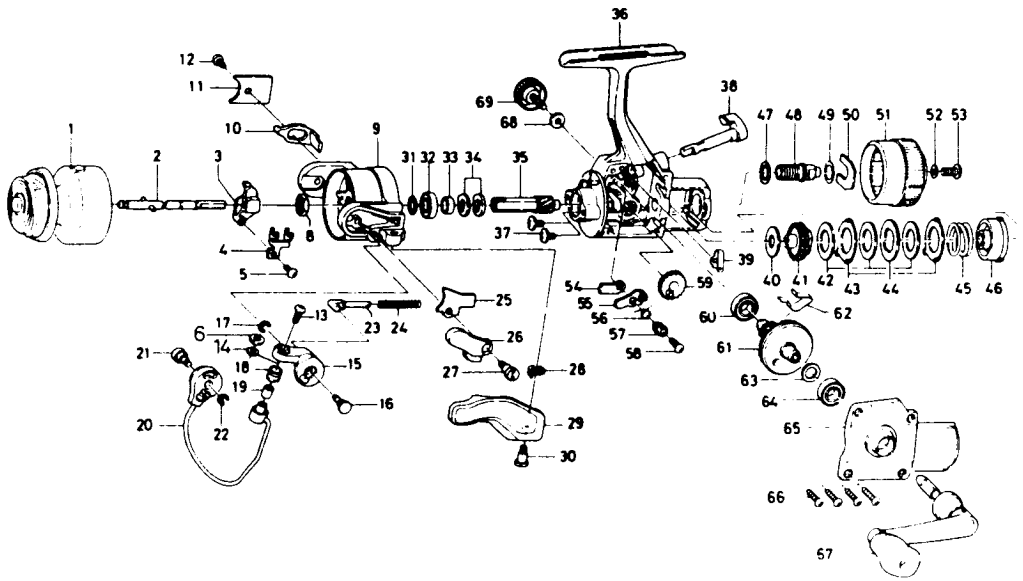


# SPINNING REEL A 1355T



Key No.	Parts No.	Parts Name	Key No.	Parts No.	Parts Name
1	K11-2201	Spool assembly	36	K11-3701	Body
2	K11-1401	Main shaft assembly	37	B84-2102	Bearing retainer screw
3	K11-1601	Oscillating slider	38	K10-9001	Anti-reverse lever
4	K11-1701	Oscillating slider retainer	39	K11-4001	Anti-reverse cam spring
5	351-0903	Oscillating slider screw	40	E21-4801	Drag washer A
6	897-9801	Line roller washer A	41	K10-9601	Click gear
8	B10-5701	Rotor nut	42	E21-5001	Drag washer B
9	K11-0101	Rotor	43	E21-5101	Eared washer
10	K11-1001	Bail trip lever	44	E21-5201	Key washer
11	E20-2401	Bail trip cover	45	K10-9701	Drag coil spring
12	B83-4401	Bail trip cover screw	46	K11-4601	Drag nut
13	B67-9302	Line roller screw	47	E21-5401	Drag screw washer A
14	B55-4301	Line roller washer B	48	K11-4301	Drag screw
15	K11-3601	Bail arm	49	373-7810	Drag screw washer B
16	K11-4401	Bail arm screw	50	E21-5701	Drag screw retainer
17	320-5901	Bail arm screw retainer	51	K10-9801	Drag knob
18	250-3921	Line roller	52	375-1001	Drag knob washer
19	B45-1501	Line roller bushing	53	353-8203	Drag knob screw
20	K11-0601	Bail	54	K11-3801	Anti-reverse pawl plate
21	B83-4201	Bail trip cam screw	55	K10-9101	Anti-reverse pawl
22	320-5901	Bail trip cam screw retainer	56	K10-9201	Anti-reverse pawl spring A
23	E21-3501	Bail spring shaft	57	B96-5501	Anti-reverse pawl collar
24	K11-0301	Bail spring	58	B00-9701	Anti-reverse pawl screw
25	K11-4201	Bail spring cover	59	B74-2501	Oscillating gear
26	B67-4901	Trigger plate	60	K11-4101	Ball bearing
27	K03-7301	Trigger screw	61	K03-9501	Drive gear
28	B67-5201	Trigger spring	62	K11-1301	Anti-reverse pawl spring B
29	B67-5107	Trigger lever	63	373-7800	Drive gear washer
30	K03-7301	Trigger screw	64	K11-4101	Ball bearing
31	371-2827	Ball bearing retaining washer	65	K11-1801	Side cover
32	K03-3701	Ball bearing	66	B83-5001	Side cover screw
33	K11-1101	Spacing sleeve	67	K11-2001	Handle assembly
34	K10-9401	Anti-reverse ratchet	68	B92-4902	Handle lock washer
35	K10-9301	Pinion gear	69	B92-5001	Handle lock screw