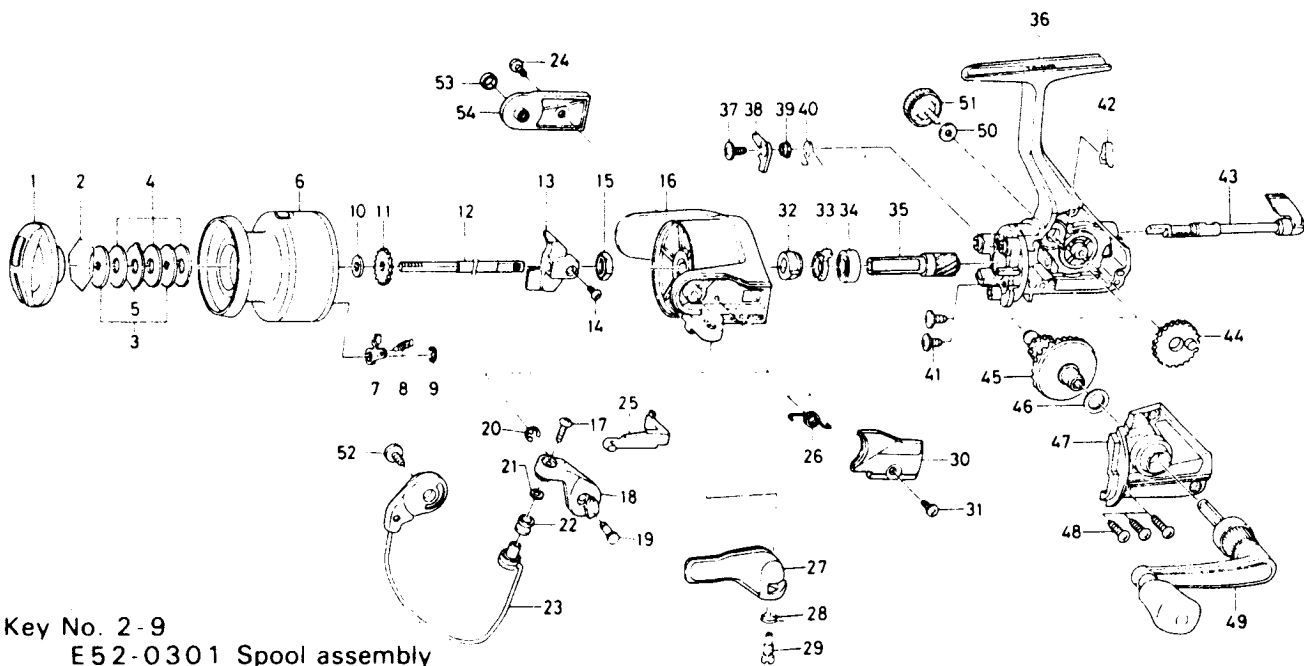


SPINNING REEL — EL1305X



Key No. 2-9
E52-0301 Spool assembly

Key No.	Parts No.	Parts Name	Key No.	Parts No.	Parts Name
1	E50-4602	Drag knob	28	E36-9901	Trigger spring
2	171-7701	Drag washer retainer	29	E37-0001	Trigger screw
3	E46-7201	Key washer	30	E49-4201	Bail spring cover
4	E13-6003	Drag washer	31	E36-4201	Bail spring cover screw
5	373-3603	Eared washer	32	E49-2401	Anti-reverse ratchet
6	E52-0401	Spool assembly	33	E38-5501	Anti-reverse pawl spring A
7	B07-5304	Click pawl	34	L03-6601	Ball bearing
8	E40-3101	Click spring	35	E51-9801	Pinion gear
9	320-5901	Click retainer	36	F16-9901	Body assembly
10	E46-7101	Spool washer	37	L00-1801	Anti-reverse pawl screw
11	270-6501	Click gear	38	L01-4401	Anti-reverse pawl
12	E48-4301	Main shaft	39	L01-4302	Anti-reverse pawl collar
13	E45-1401	Oscillating slider	40	L00-1501	Anti-reverse pawl spring B
14	351-0315	Oscillating block screw	41	E03-7801	Bearing retainer screw
15	341-9201	Rotor nut	42	E32-7801	Anti-reverse cam spring
16	F11-1203	Rotor	43	F08-5114	Anti-reverse lever
17	B67-9305	Line roller screw	44	E45-1301	Oscillating gear
18	E49-4101	Bail arm	45	F17-0001	Drive gear
19	E49-3501	Bail arm screw	46	373-7800	Drive gear washer
20	320-5901	Bail arm screw retainer	47	F19-8901	Side cover
21	B55-4301	Line roller washer	48	B83-5001	Side cover screw
22	L01-8201	Line roller	49	E49-3801	Handle assembly
23	F21-6901	Bail assembly	50	B92-4902	Handle lock washer
24	L01-1701	Bail trip cover screw	51	B92-5002	Handle lock screw
25	E45-1601	Bail trip lever	52	B51-5302	Bail trip cam screw
26	F12-8901	Bail spring	53	F17-3001	Bail trip collar
27	F11-0601	Trigger lever	54	F17-9901	Bail trip cover