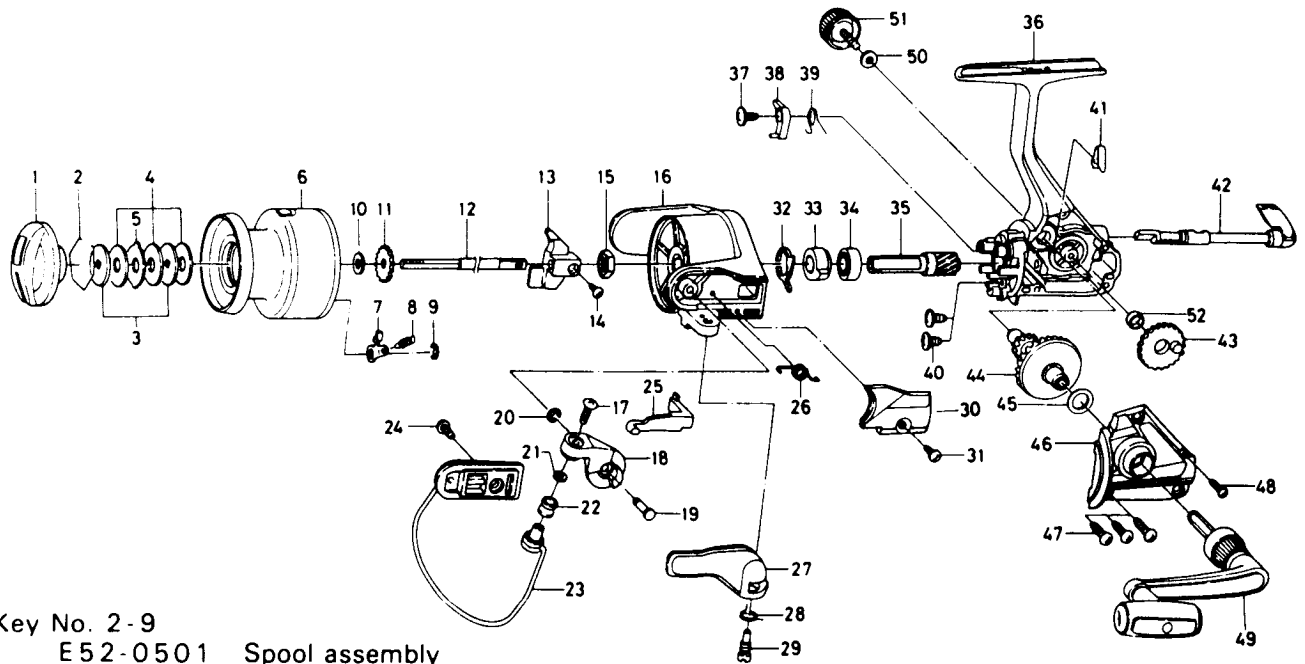


# SPINNING REEL — EL1605X



Key No. 2-9  
E52-0501 Spool assembly

| Key No. | Parts No. | Parts Name              | Key No. | Parts No. | Parts Name                 |
|---------|-----------|-------------------------|---------|-----------|----------------------------|
| 1       | E50-4702  | Drag knob               | 27      | F11-0601  | Trigger lever              |
| 2       | 171-7701  | Drag washer retainer    | 28      | E36-9901  | Trigger spring             |
| 3       | F09-4901  | Key washer              | 29      | E37-0001  | Trigger screw              |
| 4       | E13-6003  | Drag washer             | 30      | E49-2501  | Bail spring cover          |
| 5       | 373-3603  | Eared washer            | 31      | E36-4201  | Bail spring cover screw    |
| 6       | E52-0601  | Spool assembly          | 32      | E46-2001  | Anti-reverse pawl spring A |
| 7       | B07-5304  | Click pawl              | 33      | F11-1301  | Anti-reverse ratchet       |
| 8       | E40-3101  | Click spring            | 34      | L03-6502  | Ball bearing               |
| 9       | 320-5901  | Click retainer          | 35      | E52-0101  | Pinion gear                |
| 10      | F09-4701  | Spool washer            | 36      | F17-0401  | Body assembly              |
| 11      | E46-2701  | Click gear              | 37      | E00-7101  | Anti-reverse pawl screw    |
| 12      | E48-5301  | Main shaft              | 38      | E46-1302  | Anti-reverse pawl          |
| 13      | F09-1301  | Oscillating slider      | 39      | E46-1201  | Anti-reverse pawl spring B |
| 14      | 352-1502  | Oscillating block screw | 40      | E03-7801  | Bearing retainer screw     |
| 15      | 340-6602  | Rotor nut               | 41      | E32-7801  | Anti-reverse cam spring    |
| 16      | F11-0903  | Rotor                   | 42      | F08-5115  | Anti-reverse lever         |
| 17      | B67-9305  | Line roller screw       | 43      | E46-1501  | Oscillating gear           |
| 18      | E49-4101  | Bail arm                | 44      | E52-0201  | Drive gear                 |
| 19      | E49-3501  | Bail arm screw          | 45      | 373-7800  | Drive gear washer          |
| 20      | 320-5901  | Bail arm screw retainer | 46      | F19-3901  | Side cover                 |
| 21      | B55-4301  | Line roller washer      | 47      | B83-5001  | Side cover screw A         |
| 22      | L01-8201  | Line roller             | 48      | E15-8601  | Side cover screw B         |
| 23      | F17-0301  | Bail assembly           | 49      | L01-1102  | Handle assembly            |
| 24      | L01-1701  | Bail trip cam screw     | 50      | B92-4902  | Handle lock washer         |
| 25      | E46-2101  | Bail trip lever         | 51      | B92-5002  | Handle lock screw          |
| 26      | F12-8901  | Bail spring             | 52      | F13-1601  | Oscillating gear collar    |