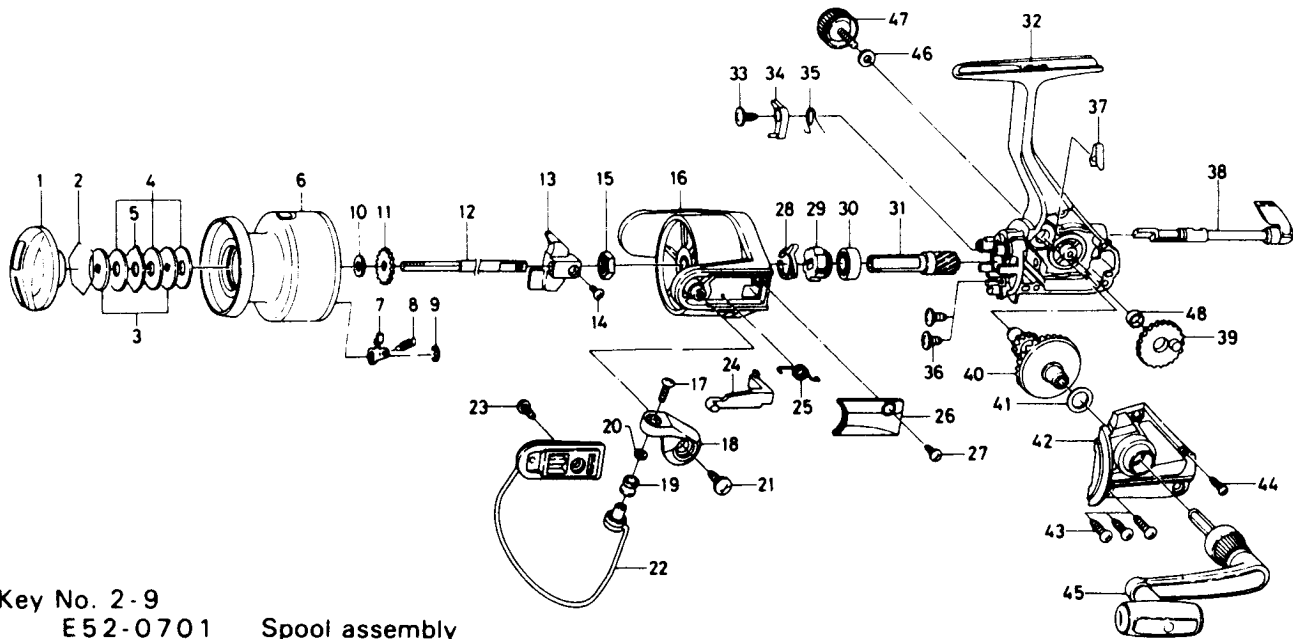


SPINNING REEL — EL2000X



Key No. 2-9
E52-0701 Spool assembly

| Key No. | Parts No. | Parts Name | Key No. | Parts No. | Parts Name |
|---------|-----------|-------------------------|---------|-----------|----------------------------|
| 1 | E50-4702 | Drag knob | 25 | F12-8901 | Bail spring |
| 2 | 171-7701 | Drag washer retainer | 26 | E46-2201 | Bail spring cover |
| 3 | F09-4901 | Key washer | 27 | E36-4201 | Bail spring cover screw |
| 4 | E13-6003 | Drag washer | 28 | E46-2001 | Anti-reverse pawl spring A |
| 5 | 373-3603 | Eared washer | 29 | E46-1901 | Anti-reverse ratchet |
| 6 | E52-0801 | Spool assembly | 30 | L03-6502 | Ball bearing |
| 7 | B07-5304 | Click pawl | 31 | E52-0101 | Pinion gear |
| 8 | E40-3101 | Click spring | 32 | F17-0402 | Body assembly |
| 9 | 320-5901 | Click retainer | 33 | E00-7101 | Anti-reverse pawl screw |
| 10 | F09-4701 | Spool washer | 34 | E46-1302 | Anti-reverse pawl |
| 11 | E46-2701 | Click gear | 35 | E46-1201 | Anti-reverse pawl spring B |
| 12 | E48-5301 | Main shaft | 36 | E03-7801 | Bearing retainer screw |
| 13 | F09-1301 | Oscillating slider | 37 | E32-7801 | Anti-reverse cam spring |
| 14 | 352-1502 | Oscillating block screw | 38 | F08-5115 | Anti-reverse lever |
| 15 | 340-6602 | Rotor nut | 39 | E46-1501 | Oscillating gear |
| 16 | F10-7204 | Rotor | 40 | E52-0201 | Drive gear |
| 17 | B67-9305 | Line roller screw | 41 | 373-7800 | Drive gear washer |
| 18 | E45-1701 | Bail arm | 42 | F19-3902 | Side cover |
| 19 | L01-8201 | Line roller | 43 | B83-5001 | Side cover screw A |
| 20 | B55-4301 | Line roller washer | 44 | E15-8601 | Side cover screw B |
| 21 | E00-7102 | Bail arm screw | 45 | L01-1102 | Handle assembly |
| 22 | F16-3701 | Bail assembly | 46 | B92-4902 | Handle lock washer |
| 23 | L01-1701 | Bail trip cam screw | 47 | B92-5002 | Handle lock screw |
| 24 | E46-3101 | Bail trip lever | 48 | F13-1601 | Oscillating gear collar |