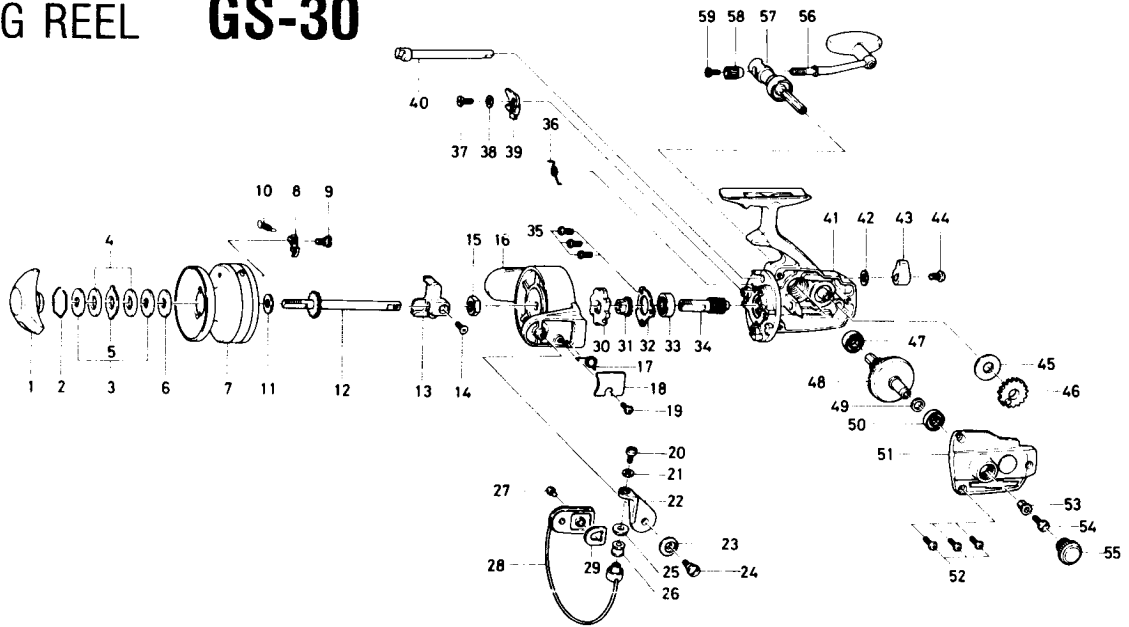


## SPINNING REEL GS-30



**LINE CAPACITY: 250 YDS., 15 LB. TEST (230m. 6.8kg)**

Key No. 2 ~ 10	6-733-1201	Spool assembly	\$16.35
Key No. 56 ~ 59	6-747-2101	Handle assembly	5.65

Key No.	Parts No.	Parts Name	Price Per Piece	Key No.	Parts No.	Parts Name	Price Per Piece
1	6-740-2601	Drag knob	\$1.75	31	6-270-7002	Click gear	\$ .50
2	6-170-4001	Drag washer retainer	.10	32	6-635-9901	Ball bearing ret. washer	.25
3	6-373-2502	Drag D washer	.15	33	6-635-4801	Ball bearing	4.00
4	6-374-2901	Disc washer	.20	34	6-402-9401	Pinion gear	1.80
5	6-375-5301	Drag A washer	.15	35	6-351-6601	Ball bearing ret. washer screw	.10
6	6-370-6901	Drag washer A	.15	36	6-144-0301	Anti-reverse cam spring	.15
7	6-733-1301	Spool	N/A	37	6-363-3601	Anti-reverse claw spring	.25
8	6-030-6801	Spool click claw	.25	38	6-375-5200	Anti-reverse claw washer	.15
9	6-363-8401	Spool click claw screw	.15	39	6-770-0731	Anti-reverse claw	.90
10	6-144-1211	Spool click claw spring	.15	40	6-461-5001	Anti-reverse cam	1.10
11	6-374-9002	Spool washer	.10	41	6-701-1302	Body	8.35
12	6-710-9123	Main shaft	.95	42	6-373-2700	Anti-reverse lever washer	.10
13	9-481-0901	Oscillating slider	.10	43	6-541-6101	Anti-reverse lever	1.30
14	6-351-8901	Oscillating slider screw	.10	44	6-352-2501	Anti-reverse lever screw	.10
15	6-340-8301	Rotor nut	.20	45	6-374-6600	Oscillating gear washer	.10
16	6-201-7803	Rotor	4.15	46	6-413-2212	Oscillating gear	.40
17	6-143-5311	Bail spring	.15	47	6-636-6011	Ball bearing	3.65
18	6-632-6411	Bail spring cover	.15	48	6-413-9101	Drive gear	3.90
19	6-351-1801	Bail spring cover screw	.10	49	6-371-2820	Drive gear washer	.10
20	6-363-3111	Bail screw	.35	50	6-636-6011	Ball bearing	3.65
21	6-375-1101	Bail washer	.10	51	6-706-7902	Body cover	3.95
22	6-231-1901	Arm lever	1.50	52	6-351-6401	Body cover screw	.10
23	6-130-3201	Bail holder cap	.10	53	6-501-8401	Handle screw holder	.50
24	6-363-1901	Arm lever screw	.30	54	6-363-8601	Handle screw	.20
25	6-501-2001	Roller collar	.25	55	6-363-4702	Handle screw cap	.50
26	6-250-4311	Line roller	.30	56	6-747-3301	Handle arm	4.20
27	6-351-6601	Bail holder screw	.10	57	6-747-3401	Handle stand	1.70
28	6-725-5622	Bail	2.30	58	6-342-3301	Handle arm ret. nut	.70
29	6-210-3111	Balancer	.35	59	6-353-9101	Handle arm ret. nut screw	.15
30	6-280-5301	Ratchet	.60				