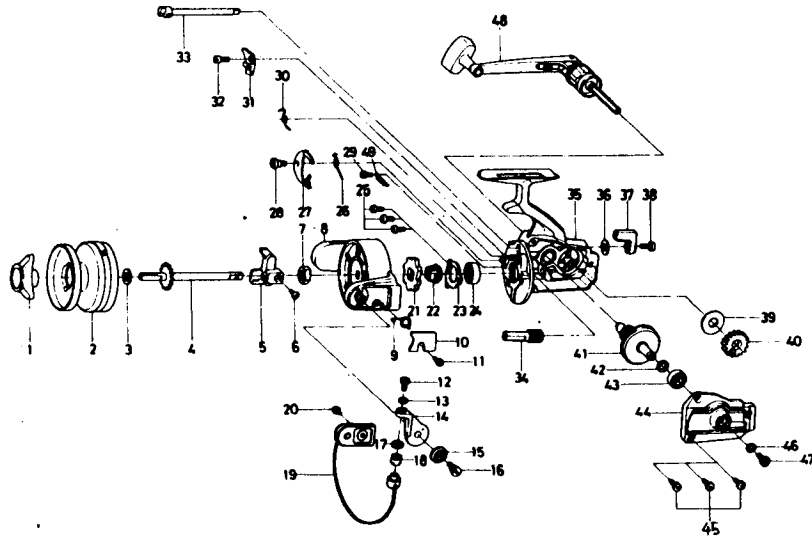




SPINNING REEL **GS-2**



LINE CAPACITY: 260 YDS. 10 LB. TEST (245m Dia. 0.30mm)

Key No.	Parts No.	Parts Name	Key No.	Parts No.	Parts Name
1	67402102	Drag knob	26	61440201	Click lever spring
2	67314602	Spool assembly	27	67700801	Click claw
3	63749002	Spool washer	28	63633001	Click claw screw
4	67108702	Main shaft	29	63633301	Click lever spring screw
5	64810901	Oscillating slider	30	61440301	Anti-reverse claw spring
6	63518901	Oscillating slider screw	31	67700711	Anti-reverse claw
7	63408301	Rotor nut	32	63633601	Anti-reverse claw screw
8	62017401	Rotor	33	67108601	Anti-reverse cam
9	61435311	Bail spring	34	64023001	Pinion gear
10	66326411	Bail spring cover	35	67006002	Body
11	63522501	Cover screw	36	63732700	Anti-reverse lever washer
12	63531801	Bail screw	37	65411901	Anti-reverse lever
13	63751001	Bail washer A	38	63522501	Anti-reverse lever screw
14	62311801	Arm lever	39	63750900	Oscillating gear washer
15	61303201	Bail holder cap	40	64131201	Oscillating gear
16	63631901	Arm lever screw	41	64131301	Drive gear
17	65011601	Bail washer B	42	63712800	Drive gear washer
18	62504201	Line roller	43	66317611	Ball bearing
19	67255501	Bail	44	67058603	Body cover
20	63516601	Bail holder screw	45	63518501	Body cover screw
21	62805301	Ratchet	46	63719521	Handle washer
22	62707001	Click gear	47	63513631	Handle screw
23	66359901	Ball bearing ret. washer	48	67460203	Handle assembly
24	66317611	Ball bearing	49	61441201	Click claw spring
25	63516601	Ball bearing ret. washer screw			

Darwa
Page 6
Date 12-75
Rev. No. 00