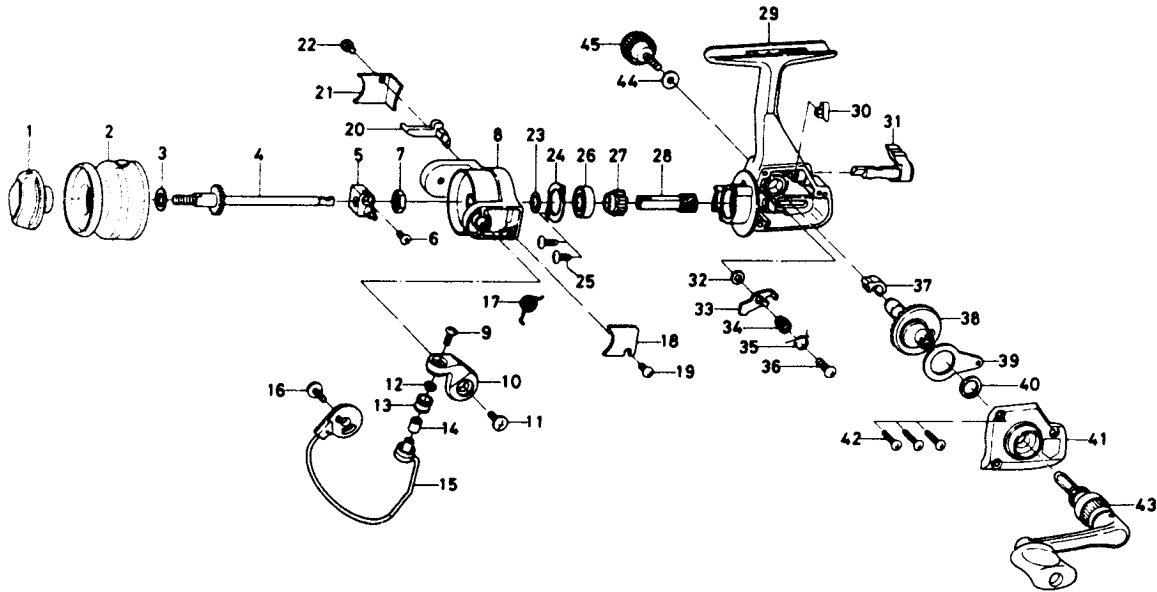


# SPINNING REEL GS500H



| Key No. | Parts No. | Parts Name                | Key No. | Parts No. | Parts Name               |
|---------|-----------|---------------------------|---------|-----------|--------------------------|
| 1       | K 15-4001 | Drag knob                 | 24      | K 15-1401 | Bearing retainer         |
| 2       | K 15-3001 | Spool assembly            | 25      | B93-3001  | Bearing retainer screw   |
| 3       | K 15-2901 | Spool washer              | 26      | E18-2801  | Ball bearing             |
| 4       | K 15-2301 | Main shaft assembly       | 27      | K 15-1201 | Anti-reverse ratchet     |
| 5       | K 15-4801 | Oscillating support       | 28      | K 15-0301 | Pinion gear              |
| 6       | K 15-5001 | Oscillating support screw | 29      | K 15-0501 | Body                     |
| 7       | 342-4001  | Rotor nut                 | 30      | K 15-0901 | Anti-reverse cam spring  |
| 8       | K 15-1501 | Rotor                     | 31      | K 15-0801 | Anti-reverse lever       |
| 9       | 352-2503  | Line roller screw         | 32      | E15-3101  | Anti-reverse pawl washer |
| 10      | K 15-1601 | Bail arm                  | 33      | K 15-1001 | Anti-reverse pawl        |
| 11      | 351-6104  | Bail arm screw            | 34      | E03-3001  | Anti-reverse pawl collar |
| 12      | B55-4301  | Line roller washer        | 35      | K 15-1101 | Anti-reverse pawl spring |
| 13      | 250-3921  | Line roller               | 36      | B00-8601  | Anti-reverse pawl screw  |
| 14      | B45-1501  | Line roller collar        | 37      | K 15-2201 | Drive gear collar        |
| 15      | K 15-1901 | Bail                      | 38      | K 15-0101 | Drive gear               |
| 16      | 351-6104  | Bail trip cam screw       | 39      | K 15-2501 | Oscillating slider       |
| 17      | E32-0201  | Bail spring               | 40      | 375-8501  | Drive gear washer        |
| 18      | K 15-4301 | Bail spring cover         | 41      | K 15-2601 | Side cover               |
| 19      | 350-8914  | Bail spring cover screw   | 42      | E13-0502  | Side cover screw         |
| 20      | K 15-1701 | Bail trip lever           | 43      | E32-1301  | Handle assembly          |
| 21      | K 15-1801 | Bail trip cover           | 44      | B92-4901  | Handle lock washer       |
| 22      | 350-8914  | Bail trip cover screw     | 45      | E03-5502  | Handle lock screw        |
| 23      | B12-8701  | Bearing washer            |         |           |                          |