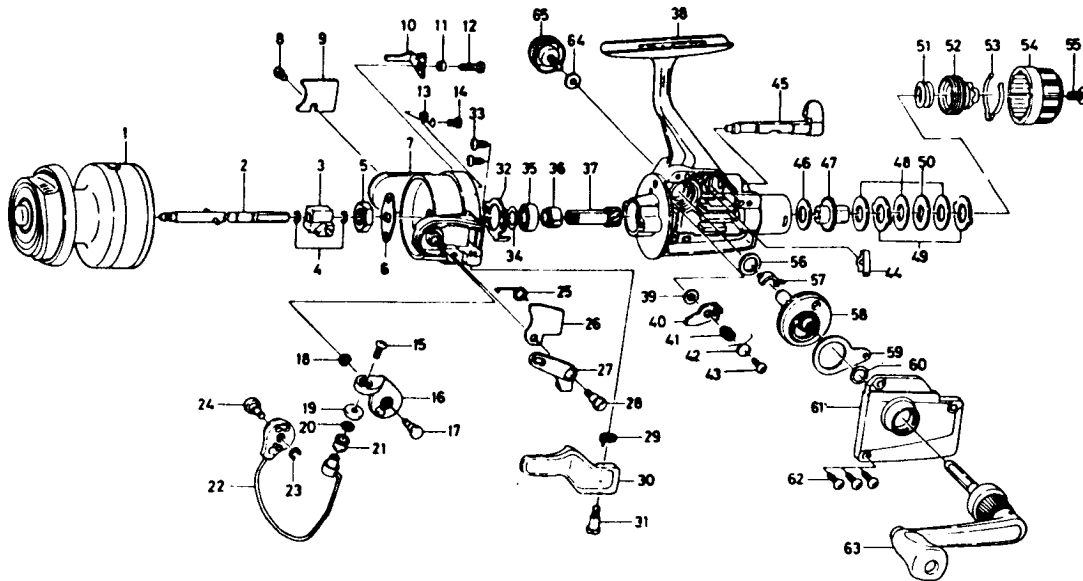


SPINNING REEL GS755T



Key No.	Parts No.	Parts Name	Key No.	Parts No.	Parts Name
1	L90-2001	Spool assembly	34	B12 8701	Rotor washer
2	E07-0101	Main shaft assembly	35	B18 1601	Ball bearing
3	B98-6501	Oscillating support	36	E04 5601	Anti-reverse ratchet
4	E04-0601	Oscillating slider retainer	37	E03-6101	Pinion gear
5	342-4001	Rotor nut	38	L90-1301	Body
6	E09-7601	Rotor plate	39	E15-3101	Anti-reverse pawl washer
7	L90-0301	Rotor assembly	40	E03 2901	Anti-reverse pawl
8	B93-3001	Bail trip cover screw	41	E03 3001	Anti-reverse pawl collar
9	E04-8401	Bail trip cover	42	B95-9601	Anti-reverse pawl spring
10	B59-1003	Bail trip lever	43	E02-7401	Anti-reverse pawl screw
11	E05-3201	Bail trip lever collar	44	B58 8601	Anti-reverse lever spring
12	B96-7601	Bail trip lever screw	45	E03 2802	Anti-reverse lever
13	B59-1201	Lever spring	46	B58-9106	Drag washer A
14	B93-3001	Lever spring screw	47	E03 5101	Click gear
15	352-2502	Line roller screw	48	B58 9602	Drag washer B
16	E04-5902	Bail arm	49	B58-9501	Eared washer
17	E04-6001	Bail arm screw	50	B58-9701	Key washer
18	320-5901	Bail arm screw retainer	51	B58-9801	Drag coil spring
19	B97-9801	Line roller collar	52	E03 3101	Drag screw
20	B55-4301	Line roller washer	53	E03-3201	Drag washer spring
21	250-3921	Line roller	54	E18-2404	Drag knob
22	E04-6701	Bail	55	353-8203	Drag knob screw
23	320-5901	Bail trip cam screw retainer	56	E03 4501	Drive gear washer A
24	E04-8601	Bail trip cam screw	57	B96 0801	Drive gear collar
25	L90-0601	Bail spring	58	E03-6301	Drive gear
26	L90-0402	Bail spring cover	59	481-1331	Oscillating slider
27	E04-6202	Trigger plate	60	375-8500	Drive gear washer B
28	E04 6301	Bail spring cover screw	61	L90 1701	Side cover
29	B67-5201	Trigger spring	62	B83-5002	Side cover screw
30	E04-6401	Trigger lever	63	L90-1201	Handle assembly
31	E04-6302	Trigger screw	64	B92 4901	Handle lock washer
32	E15-0701	Bearing retainer	65	E03 5501	Handle lock screw
33	B93-3001	Bearing retainer screw			