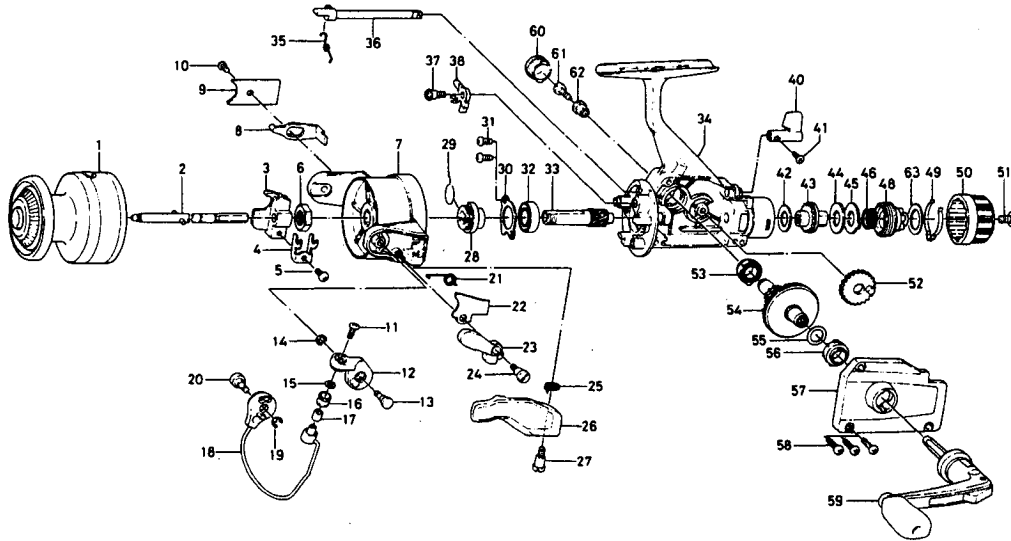


# SPINNING REEL SGA 1055/1355/GS800RDA



Key No.	Parts No.	Parts Name
1	383-5201	Spool
2	B83-4501	Main shaft
3	B62-0702	Oscillating slider
4	B62-0801	Oscillating slider retainer
5	351-1804	Oscillating slider screw
6	B67-9401	Rotor nut
7	B81-8301	Rotor
8	B83-4301	Bail kick lever
9	B74-7303	Bail kick lever cover
10	B83-4401	Bail kick lever cover screw
11	B67-9303	Bail screw
12	B67-4601	Arm lever
13	B83-3801	Arm lever screw
14	320-5901	Arm lever screw retainer
15	B55-4301	Bail washer
16	250-3921	Line roller
17	B45-1501	Roller collar
18	B83-4001	Bail
19	320-5901	Bail holder screw retainer
20	B83-4201	Bail holder screw
21	B83-3701	Bail spring
22	B83-3901	Bail spring cover
23	B67-4901	Trigger plate
24	B68-8801	Bail spring cover screw
25	B67-5201	Trigger spring
26	B67-5101	Trigger lever
27	B68-8802	Trigger screw
28	B83-5601	Ratchet
29	145-0501	Anti-reverse claw spring
30	B45-6401	Ball bearing ret. washer
31	B83-4402	Ball bearing ret. washer screw
32	637-5701	Ball bearing
33	B83-3501	Pinion gear
34	B83-3301	Body
35	B44-8501	Anti-reverse cam spring

Key No.	Parts No.	Parts Name
36	B44-8401	Anti-reverse cam
37	B61-8101	Anti-reverse claw screw
38	B90-3001	Anti-reverse claw
40	B83-3401	Anti-reverse lever
41	B12-8201	Anti-reverse lever screw
42	B48-9901	Drag washer A
43	B83-3602	Click gear
44	B76-0501	Drag washer B
45	B49-0102	Drag washer C
46	141-8721	Drag knob spring
48	B74-7603	Drag screw
49	B74-7702	Drag washer spring
50	B82-5505	Drag knob
51	352-1105	Drag knob screw
52	B74-2501	Oscillating gear
53	B84-3901	Bearing
54	B83-4701	Drive gear
55	373-7800	Drive gear washer
56	B84-3901	Bearing
57	B83-4801	Body cover
58	B83-5001	Body cover screw
59	B83-5103	Handle
60	B67-9802	Handle screw cap
61	363-8511	Handle screw
62	501-8501	Handle collar
63	B90-8201	Drag washer D

**GS800RDA/SGA1355 Special Parts**

* 1	Spool
7	B81-8501 Rotor
8	B83-5701 Bail kick lever
18	B83-7601 Bail
*34	Body
*57	Body cover

\*Order by model and part name due to color change.