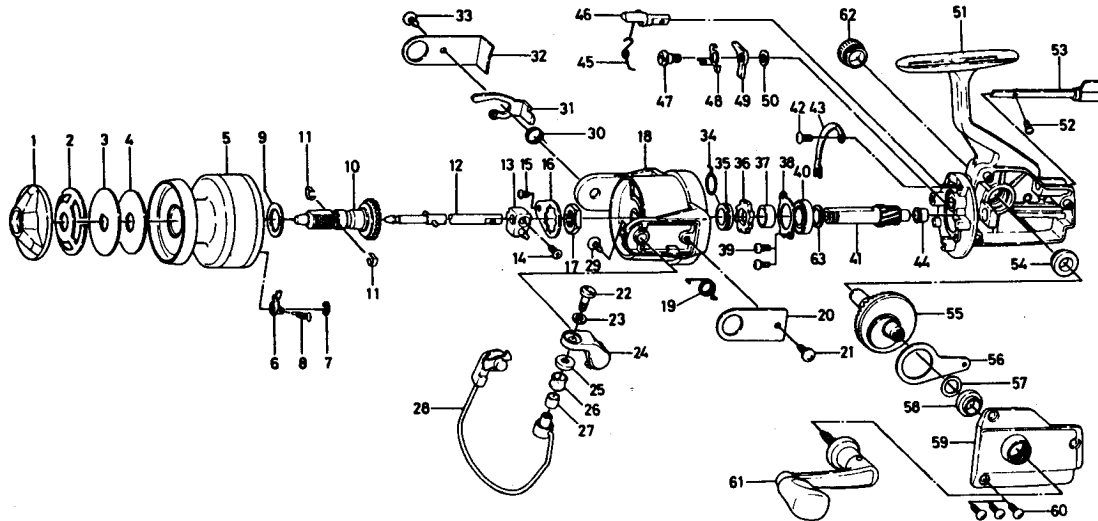


# SPINNING REEL PC-13



Key No.	Parts No.	Parts Name
1	B44-0301	Drag knob
2	B44-0201	Drag spring washer
3	B44-0101	Drag D washer
4	B44-0001	Disc washer
5	B43-9301	Spool
6	B07-5302	Spool click claw
7	320-5901	Spool click claw retainer
8	144-1211	Spool click claw spring
9	B43-9901	Spool washer
10	B43-9701	Spool metal
11	151-9501	Spool metal leaf spring
12	B43-8001	Main shaft
13	637-0101	Oscillating support
14	B39-5501	Oscillating support screw
15	B43-5601	Rotor nut holding plate screw
16	B02-1601	Rotor nut holding plate
17	B43-7601	Rotor nut
18	B43-6001	Rotor
19	B43-6101	Bail spring
20	B43-6501	Bail spring cover
21	B43-6601	Bail spring cover screw
22	353-1811	Bail screw
23	375-1001	Bail washer
24	B43-6201	Arm lever
25	501-1601	Roller collar
26	B41-2901	Line roller
27	B41-3001	Sleeve
28	B43-6701	Bail
29	B43-6601	Arm lever screw
30	B43-7101	Bail kick lever spring
31	B43-7201	Bail kick lever

Sold as one unit, B43-9201 Spool assembly

Key No.	Parts No.	Parts Name
32	B43-7301	Bail kick lever cover
33	B43-6601	Bail kick lever cover screw
34	145-0901	Anti-reverse claw spring
35	501-9901	Spring holder
36	280-9002	Ratchet
37	B44-0401	Spacer
38	B35-6301	Ball bearing ret. washer
39	B43-5601	Ball bearing ret. washer screw
40	636-6011	Ball bearing
41	B43-5801	Pinion gear
42	B43-5601	Cam kick plate screw
43	B32-1701	Cam kick plate
44	B43-5701	Pinion holder
45	144-0321	Anti-reverse cam spring
46	B43-5101	Anti-reverse cam
47	B44-0501	Anti-reverse claw screw
48	041-7101	Anti-reverse claw plate
49	111-8201	Anti-reverse claw
50	375-2001	Anti-reverse claw washer
51	B43-4701	Body
52	B43-5501	Anti-reverse lever screw
53	B43-5201	Anti-reverse lever
54	B43-7702	Bearing
55	B43-7801	Drive gear
56	481-2101	Oscillating slider
57	B15-1401	Drive gear washer
58	B43-7702	Bearing
59	B43-8301	Body cover
60	B43-8501	Body cover screw
61	B55-0701	Handle
62	B22-4502	Handle screw cap
63	B55-5001	Pinion washer

6Y0038010