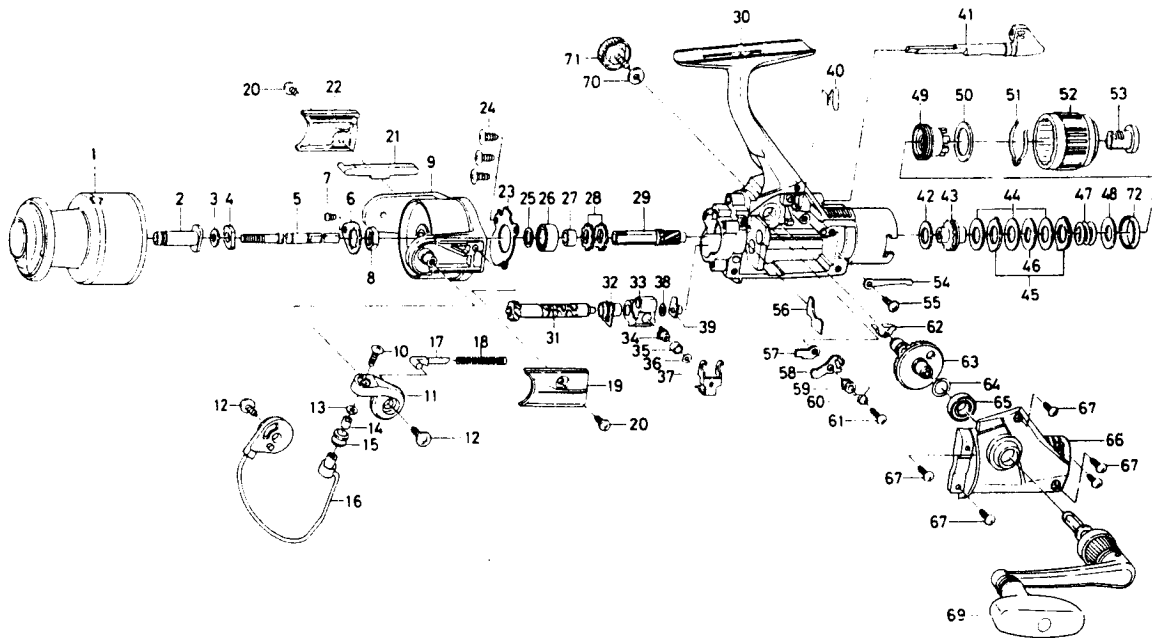


SPINNING REEL — PM1650 / 2050



Key			
No.	Part No.	Part Name	Price
1	F10-9302	Spool assembly	11.50
2	E48-4001	Spool metal	2.80
3	375-3002	Spool washer	.45
4	E18-8801	Main shaft washer	.95
5	E48-3001	Main shaft	3.70
6	B66-2601	Rotor nut holding plate	1.10
7	B93-3001	Rotor nut holding plate screw	.45
8	B10-5701	Rotor nut	.65
9	F01-1108	Rotor	5.00
10	B67-9304	Line roller screw	.40
11	F00-8501	Bail arm	1.65
12	E00-7101	Bail arm screw	.45
13	B55-4301	Line roller washer	.40
14	B45-1501	Line roller bushing	.60
15	250-3921	Line roller	.90
16	F10-9101	Bail assembly	4.65
17	E36-4401	Bail spring shaft	.70
18	E39-0601	Bail spring	.60
19	E37-7902	Bail spring cover	1.65
20	E36-4202	Bail spring cover screw	.60
21	F01-1602	Bail trip lever	1.70
22	E37-8206	Bail trip cover	1.90
23	E48-2901	Bearing retainer	.70
24	E03-7801	Bearing retainer screw	.60
25	371-2827	Bearing washer	.60
26	B54-6001	Ball bearing A	7.70
27	F01-1401	Spacing sleeve	1.10
28	E37-6701	Anti-reverse ratchet	.70
29	E48-4101	Pinion gear	7.50
30	F10-9402	Body assembly	19.85
31	F10-3601	Worm shaft	8.60
32	E48-2701	Worm shaft bush	.95
33	F10-5101	Oscillating slider	3.20
34	E19-1202	Oscillating pawl	5.90
35	E19-1301	Oscillating pawl bush	3.10
36	375-0800	Oscillating pawl washer	.40
37	F10-5201	Oscillating slider cover	1.40
38	B53-6100	Worm shaft washer	.35
39	F05-6901	Worm shaft collar	.95

Key			
No.	Part No.	Part Name	Price
40	E26-8701	Anti-reverse cam spring	.60
41	F05-9905	Anti-reverse lever	1.40
42	B46-9505	Drag washer A	.45
43	E48-3201	Click gear	1.70
44	E14-3301	Drag washer B	.65
45	B83-9501	Eared washer	.55
46	E02-4401	Key washer	.60
47	B98-2901	Drag coil spring	.70
48	B27-0703	Drag screw washer A	.60
49	E48-3301	Drag screw	2.95
50	F12-0601	Drag screw washer B	.90
51	F13-6701	Drag washer spring	.70
52	F10-3702	Drag knob	3.00
53	F05-7801	Drag knob screw	1.45
54	E48-3101	Click leaf spring	1.15
55	E36-4202	Click leaf spring screw	.60
56	E48-2801	Shield plate	.70
57	B96-5301	Anti-reverse pawl plate	.75
58	E27-7002	Anti-reverse pawl	1.10
59	B96-5501	Anti-reverse pawl collar	.95
60	B96-5601	Anti-reverse pawl spring A	.70
61	B00-9701	Anti-reverse pawl screw	.45
62	E37-7201	Anti-reverse pawl spring B	1.65
63	E41-8601	Drive gear	3.90
64	373-7803	Drive gear washer	.40
65	631-6901	Ball bearing B	6.85
66	F10-9502	Side cover	6.90
67	E15-8602	Side cover screw	.60
69	E41-8701	Handle assembly	8.75
70	F02-0201	Handle lock washer	.35
71	F03-5601	Handle lock screw	1.65
72	F15-6501	Drag screw collar	1.10

PM2050 Special Parts:

1	F11-8402	Spool assembly	12.00
9	F01-1805	Rotor	5.50
16	F11-8201	Bail assembly	4.65
18	E51-4401	Bail spring	.60
30	F10-9403	Body assembly	19.85
66	F10-9503	Side cover	6.90