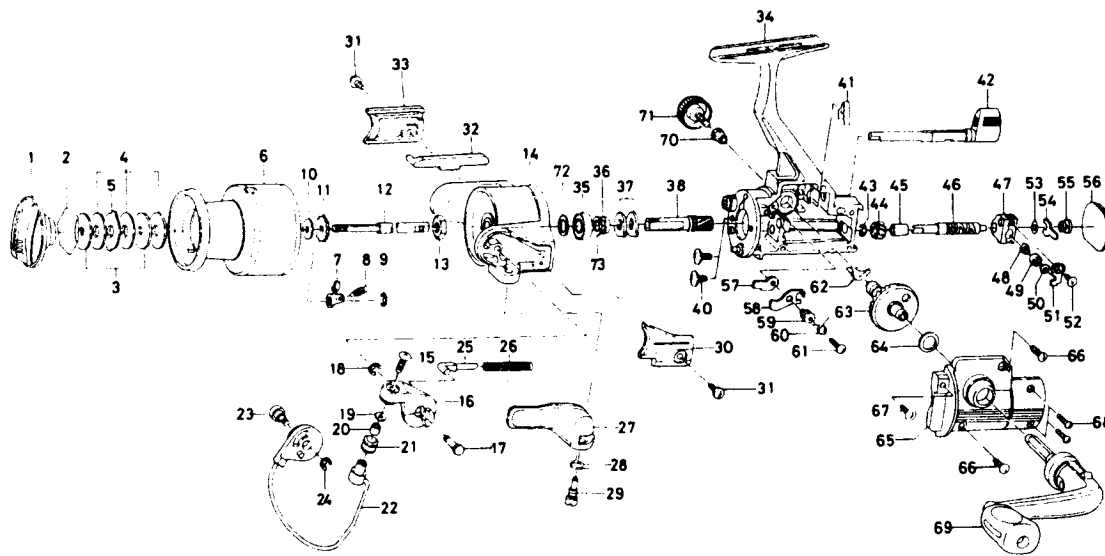


# SPINNING REEL PM705H/1005H



Key No. 2-9  
E36-8602 Spool assembly

Key No.	Parts No.	Parts Name
1	E29-8104	Drag knob
2	171-7701	Drag washer retainer
3	E13-6101	Key washer
4	E13-6003	Drag washer
5	373-3603	Eared washer
6	E36-8702	Spool assembly
7	807-5303	Click pawl
8	E40-3101	Click spring
9	320-5901	Click retainer
10	E39-4001	Spool washer
11	E36-5301	Click gear
12	E37-2301	Main shaft assembly
13	341-9201	Rotor nut
14	E37-3204	Rotor
15	B67-9302	Line roller screw
16	E37-3301	Bail arm
17	E37-3401	Bail arm screw
18	320-5901	Bail arm screw retainer
19	B55-4301	Line roller washer
20	B45-1501	Line roller bushing
21	E22-5101	Line roller
22	E38-8501	Bail
23	E38-3102	Bail trip cam screw
24	320-5901	Bail trip cam screw retainer
25	E36-8201	Bail spring shaft
26	E37-2401	Bail spring
27	E37-3601	Trigger lever
28	E36-9901	Trigger spring
29	E37-0001	Trigger screw
30	E37-3502	Bail spring cover
31	E36-4201	Bail spring cover screw
32	E36-8401	Bail trip lever
33	E36-8502	Bail trip cover
34	F01-9901	Body
35	634-1301	Ball bearing
36	E29-6101	Spacing sleeve
37	E36-9401	Anti-reverse ratchet
38	F00-5301	Pinion gear

Key No.	Parts No.	Parts Name
40	E10-7401	Bearing retainer screw
41	E26-8701	Anti-reverse cam spring
42	E36-3207	Anti-reverse lever
43	B33-9801	Worm shaft gear retainer
44	F03-6601	Worm shaft gear
45	E29-6501	Worm shaft bush
46	E39-3801	Worm shaft
47	F01-1003	Oscillating slider
48	E12-2403	Oscillating pawl
49	E12-4601	Oscillating pawl bush
50	375-0800	Oscillating pawl washer
51	E11-6801	Oscillating slider cover
52	E15-0202	Oscillating slider cover screw
53	B53-6100	Worm shaft washer
54	E29-6701	Worm shaft retainer
55	E29-6601	Worm shaft collar
56	F01-9802	Rear cover
57	B95-9301	Anti-reverse pawl plate
58	E27-1301	Anti-reverse pawl
59	B95-9501	Anti-reverse pawl collar
60	B95-9602	Anti-reverse pawl spring A
61	B00-8601	Anti-reverse pawl screw
62	E29-6901	Anti-reverse pawl spring B
63	E34-1501	Drive gear
64	375-8500	Drive gear washer
65	F02-0001	Side cover
66	E15-8601	Side cover screw A
67	E13-0501	Side cover screw B
68	E11-9601	Side cover screw C
69	F02-0403	Handle assembly
70	501-8501	Handle collar
71	F03-5601	Handle lock screw
72	375-8503	Ball bearing retaining washer
73	375-8500	Pinion washer

**PM1005H Special Parts**

Key No.	Parts No.	Parts Name
2-9	E38-1802	Spool assembly
6	E38-1902	Spool assembly
14	E38-2304	Rotor
22	E38-8901	Bail
56	F01-9805	Rear cover