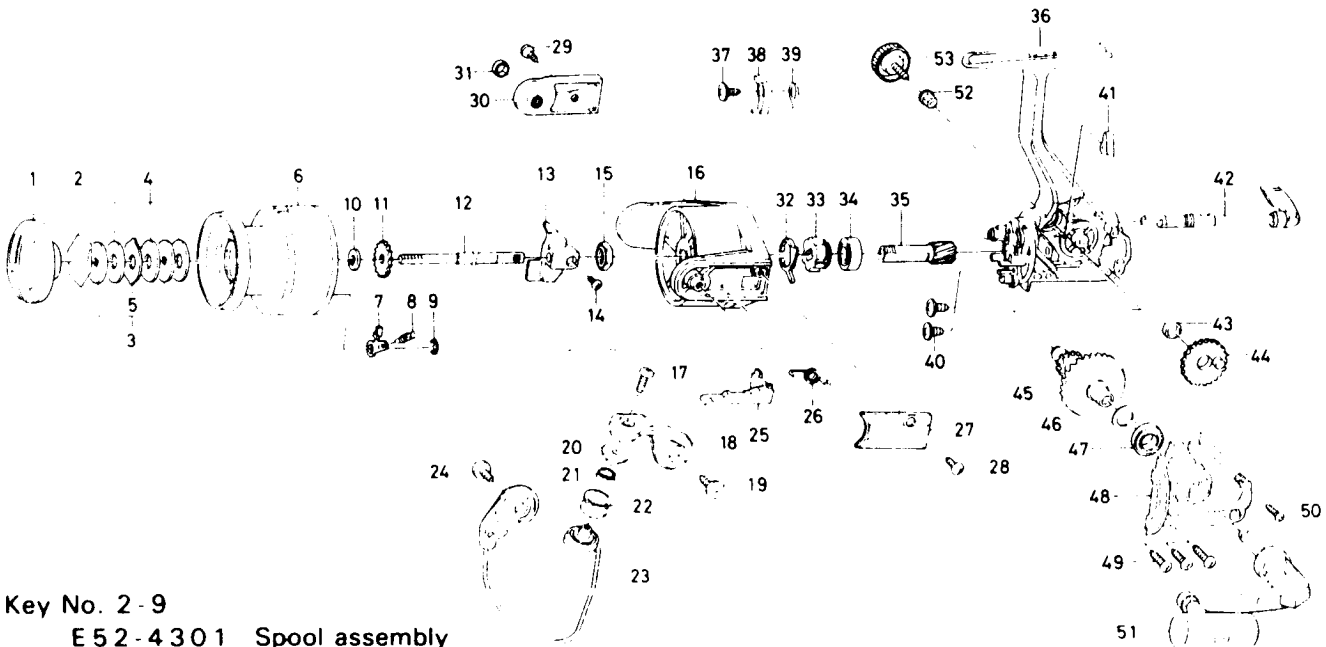


# SPINNING REEL — PS1600BL/2000BL



Key No. 2-9

E 52-4301 Spool assembly

Key No.	Parts No.	Parts Name	Key No.	Parts No.	Parts Name
1	F 19-8801	Drag knob	28	E 36-4201	Bail spring cover screw
2	171-7701	Drag washer retainer	29	L 01-1701	Bail trip cover screw
3	F 09-4901	Key washer	30	F 19-4001	Bail trip cover
4	E 13-6003	Drag washer	31	F 17-3001	Bail trip collar
5	373-3603	Eared washer	32	E 46-2001	Anti-reverse pawl spring A
6	E 52-4401	Spool assembly	33	E 46-1901	Anti-reverse ratchet
7	B 07-5304	Click pawl	34	L 03-6502	Ball bearing B
8	E 40-3101	Click spring	35	E 52-0101	Pinion gear
9	320-5901	Click retainer	36	F 19-3801	Body assembly
10	F 09-4701	Spool washer	37	E 00-7101	Anti-reverse pawl screw
11	E 46-2701	Click gear	38	E 46-1302	Anti-reverse pawl
12	E 48-5301	Main shaft	39	E 46-1201	Anti-reverse pawl spring B
13	F 09-1301	Oscillating slider	40	E 03-7801	Bearing retainer screw
14	352-1502	Oscillating block screw	41	E 32-7801	Anti-reverse cam spring
15	340-6602	Rotor nut	42	F 08-5119	Anti-reverse lever
16	F 10-6604	Rotor	43	F 13-1601	Oscillating gear collar
17	B 67-9305	Line roller screw	44	E 46-1501	Oscillating gear
18	E 50-4802	Bail arm	45	E 52-0201	Drive gear
19	E 00-7102	Bail arm screw	46	373-7800	Drive gear washer
20	F 06-6301	Line roller collar	47	631-6901	Ball bearing C
21	F 05-5601	Ball bearing A	48	E 50-5605	Side cover
22	F 05-8901	Line roller	49	B 83-5001	Side cover screw A
23	F 19-4101	Bail assembly	50	E 15-8601	Side cover screw B
24	B 51-5302	Bail trip cam screw	51	L 05-0102	Handle assembly
25	E 46-2101	Bail trip lever	52	E 12-7501	Handle collar
26	F 12-8901	Bail spring	53	B 92-5002	Handle lock screw
27	E 46-2201	Bail spring cover			