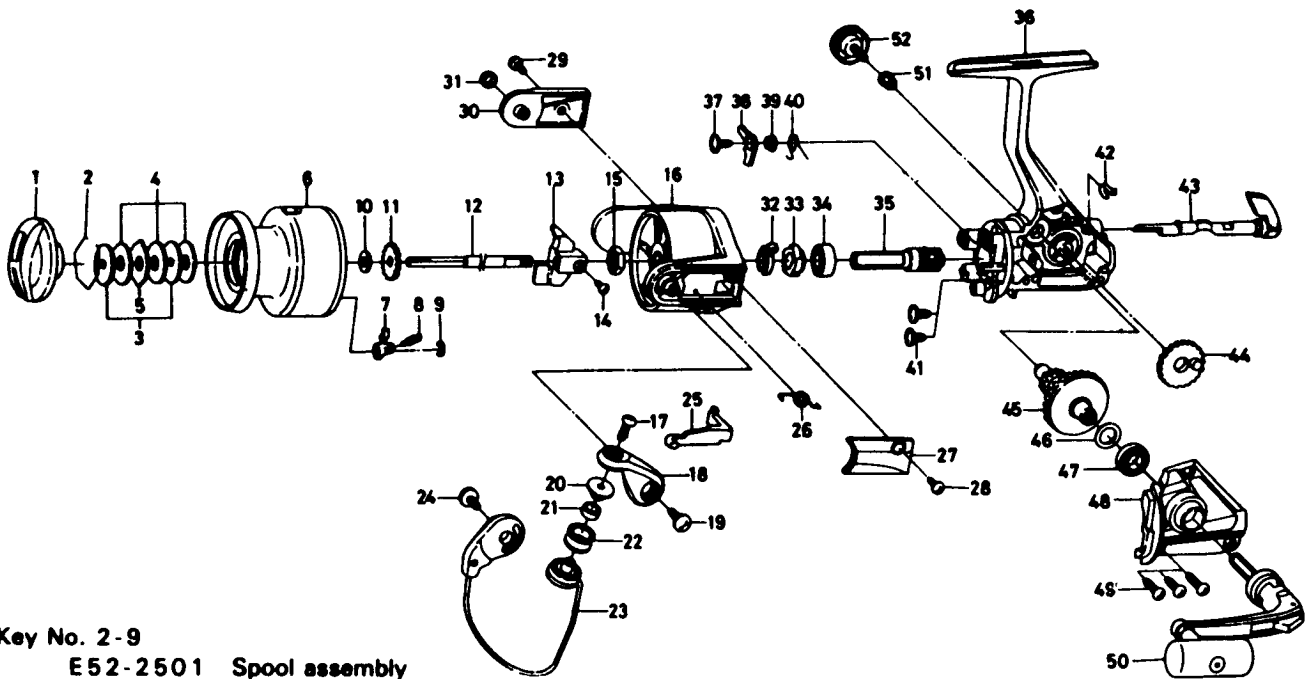


SPINNING REEL — PS700BL



Key No. 2-9
E52-2501 Spool assembly

Key No.	Parts No.	Parts Name	Key No.	Parts No.	Parts Name
1	F19-9101	Drag knob	27	E49-6201	Bail spring cover
2	171-7701	Drag washer retainer	28	E36-4201	Bail spring cover screw
3	E46-7201	Key washer	29	L01-1701	Bail trip cover screw
4	E13-6001	Drag washer	30	F17-2901	Bail trip cover
5	373-3603	Eared washer	31	F17-3001	Bail trip collar
6	E52-2601	Spool assembly	32	F12-2101	Anti-reverse pawl spring A
7	B07-5304	Click pawl	33	F12-1801	Anti-reverse ratchet
8	E40-3101	Click spring	34	634-1301	Ball bearing B
9	320-5901	Click retainer	35	F12-1601	Pinion gear
10	L02-5001	Spool washer	36	F17-2201	Body assembly
11	270-6501	Click gear	37	F12-5701	Anti-reverse pawl screw
12	E49-8401	Main shaft	38	F12-1901	Anti-reverse pawl
13	F12-2301	Oscillating slider	39	F12-3501	Anti-reverse pawl collar
14	351-0311	Oscillating block screw	40	F12-3401	Anti-reverse pawl spring B
15	341-9201	Rotor nut	41	E03-7801	Bearing retainer screw
16	E50-0505	Rotor	42	F12-2001	Anti-reverse cam spring
17	B67-9305	Line roller screw	43	F08-5117	Anti-reverse lever
18	F17-2401	Bail arm	44	F12-2201	Oscillating gear
19	E00-7102	Bail arm screw	45	F12-1501	Drive gear
20	F08-6301	Line roller collar	46	375-8500	Drive gear washer
21	F05-5601	Ball bearing A	47	634-1301	Ball bearing C
22	F05-8901	Line roller	48	F16-2105	Side cover
23	F17-2501	Bail assembly	49	E15-8601	Side cover screw
24	353-8208	Bail trip cam screw	50	E52-2701	Handle assembly
25	E49-6401	Bail trip lever	51	501-8501	Handle collar
26	E49-6801	Bail spring	52	B92-5005	Handle lock screw