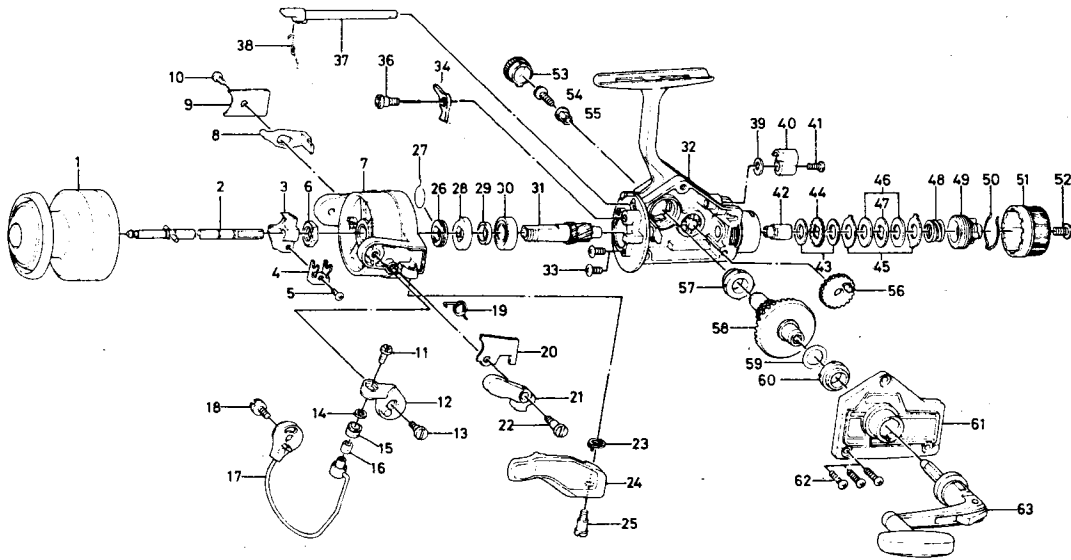


SPINNING REEL **RG1355/RG1655**



Key No.	Parts No.	Parts Name
1	B67-7101	Spool
2	B67-6101	Main shaft
3	B67-6301	Oscillating slider
4	B62-0801	Oscillating slider ret. plate
5	351-1804	Oscillating slider ret. plate screw
6	B68-1701	Rotor nut
7	B67-4401	Rotor
8	B45-1001	Bail kick lever
9	B68-1301	Bail kick lever cover
10	352-0401	Bail kick lever cover screw
11	363-4411	Bail screw
12	B67-4601	Arm lever
13	B67-4701	Arm lever screw
14	B55-4301	Bail washer
15	250-3921	Line roller
16	B45-1501	Roller collar
17	B67-5301	Bail
18	B68-8701	Bail holder screw
19	B67-4501	Bail spring
20	B67-4801	Bail spring cover
21	B67-4901	Trigger plate
22	B68-8801	Bail spring cover screw A
23	B67-5201	Trigger spring
24	B67-5101	Trigger lever
25	B68-8801	Trigger screw
26	B68-6401	Spring holder
27	145-0901	Anti-reverse claw spring
28	B67-4301	Ratchet
29	501-9801	Spacing sleeve
30	636-6011	Ball bearing
31	B70-5701	Pinion gear
32	B67-3601	Body
33	351-6102	Ball bearing screw
34	B74-5501	Anti-reverse claw
36	363-9301	Anti-reverse claw screw

Key No.	Parts No.	Parts Name
37	B67-4101	Anti-reverse cam
38	144-0321	Anti-reverse cam spring
39	371-6903	Anti-reverse lever washer
40	541-6801	Anti-reverse lever
41	353-4401	Anti-reverse lever screw
42	B48-9801	Drag washer holder
43	B48-9901	Drag washer A
44	B49-0001	Click gear
45	B49-0101	Drag washer B
46	B49-0201	Drag washer C
47	B49-0301	Drag washer D
48	B67-8501	Drag washer spring
49	B67-5601	Drag screw
50	B67-5701	Drag washer retainer
51	B67-5801	Drag knob
52	352-1105	Drag knob screw
53	B68-2601	Handle screw cap
54	363-8511	Handle screw
55	501-8501	Handle collar
56	413-4501	Oscillating gear
57	501-6102	Bearing
58	B67-6001	Drive gear
59	371-2800	Drive gear adjusting washer
60	501-6102	Bearing
61	B67-6401	Body cover
62	351-8501	Body cover screw
63	B67-6901	Handle

Special parts for RG1655

1	B67-8101	Spool
7	B67-8701	Rotor
8	B45-7401	Bail kick lever
17	B69-5601	Bail
32	B67-3602	Body
61	B67-6402	Body cover