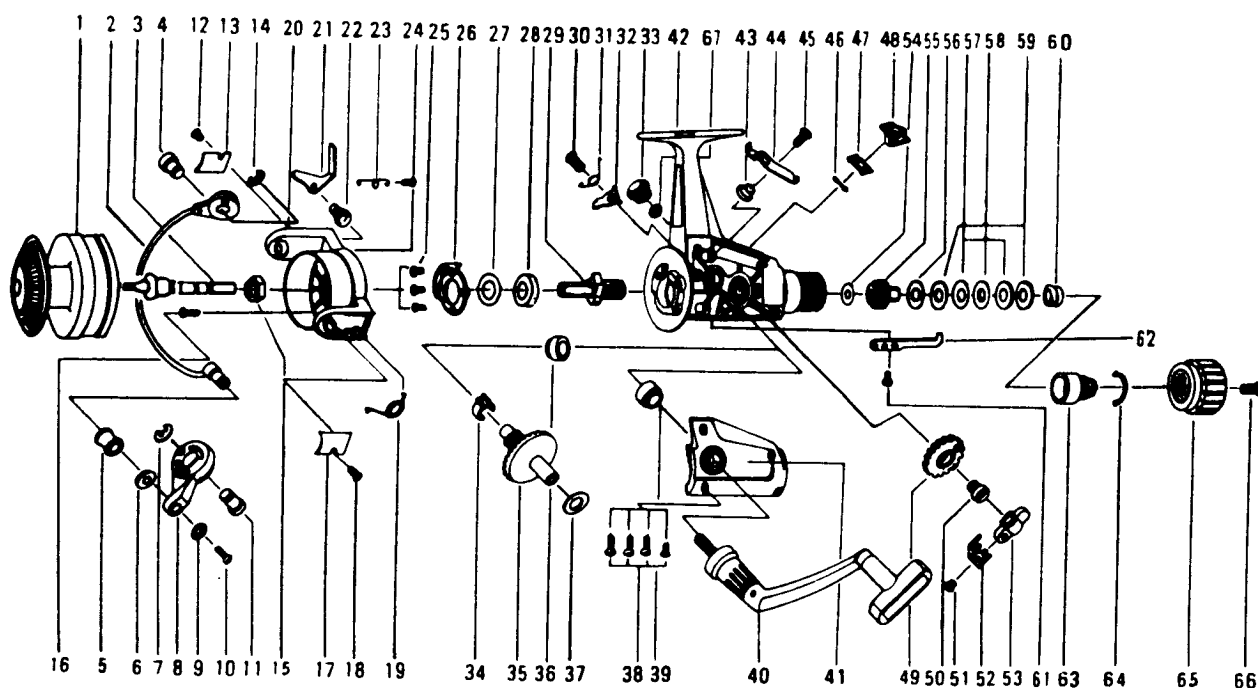


SPINNING REEL — SF2650



Key

No.	Part No.	Part Name	Price
1	SF2-0010	Spool assembly	7.00
2	SF2-0020	Bail assembly	5.00
3	SF2-0030	Main shaft assembly	2.50
4	SF2-0040	Bail trip cam screw	.60
5	SF2-0050	Line roller	1.90
6	SF2-0060	Line roller washer	.45
7	SF2-0070	Bail arm screw retainer	.45
8	SF2-0080	Bail arm	1.00
9	SF2-0090	Line roller lock washer	.45
10	SF2-0100	Line roller screw	.50
11	SF2-0110	Bail arm screw	1.00
12	SF1-0110	Bail trip cover screw	.45
13	SF2-0130	Bail trip cover	.70
14	SF2-0070	Bail trip cam screw retainer	.45
15	SF2-0150	Rotor nut	.55
16	SF2-0160	Rotor nut lock screw	.50
17	SF2-0170	Bail spring cover	.70
18	SF1-0170	Bail spring cover screw	.45
19	SF2-0190	Bail spring	.60
20	SF2-0200	Rotor	5.70
21	SF2-0210	Bail trip lever	1.00
22	SF2-0220	Bail trip screw	.45
23	SF2-0230	Bail trip spring	.60
24	SF2-0240	Bail trip spring screw	.55
25	SF1-0180	Bearing plate screw	.45
26	SF2-0260	Bearing plate	1.25
27	SF2-0270	Bearing washer	.45
28	SF2-0280	Pinion bushing	2.50
29	SF2-0290	Pinion gear	3.50
30	SF2-0300	Anti-reverse claw screw	.60
31	SF2-0310	Anti-reverse claw spring	.60
32	SF2-0320	Anti-reverse claw	.55
33	SF2-0330	Handle lock screw	.60
34	SF2-0340	Slider spring	.70

Key

No.	Part No.	Part Name	Price
35	SF2-0350	Drive gear	3.50
36	SF2-0360	Bushing	2.50
37	SF2-0370	Driver gear adjusting washer	.40
38	SF2-0380	Side cover screw	.50
39	SF2-0360	Bushing	2.50
40	SF2-0400	Handle assembly	8.50
41	SF2-0410	Side cover	3.85
42	SF2-0420	Body	9.50
43	SF2-0430	Anti-reverse cam bushing	.80
44	SF2-0440	Anti-reverse cam	1.00
45	SF2-0450	Anti-reverse cam screw	.60
46	SF2-0460	Anti-reverse lever pin	.50
47	SF2-0470	Anti-reverse lever plate spring	.50
48	SF2-0480	Anti-reverse lever	.50
49	SF2-0490	Oscillating gear	2.00
50	SF2-0500	Oscillating gear screw	.70
51	SF2-0510	Oscillating slider screw	.50
52	SF2-0520	Oscillating slider holder plate	.85
53	SF2-0530	Oscillating slider	2.00
54	SF2-0540	Drag "E" washer	.60
55	SF2-0550	Click gear	2.30
56	SF2-0560	Drag "C" washer	.60
57	SF2-0570	Drag "B" washer	.60
58	SF2-0580	Drag "D" washer	.60
59	SF2-0590	Drag "A" washer	.60
60	SF2-0600	Drag coil spring	1.25
61	SF2-0610	Click claw screw	.50
62	SF2-0620	Click claw spring	.70
63	SF2-0630	Drag screw	.70
64	SF2-0640	Drag washer spring	.60
65	SF2-0650	Drag knob	2.50
66	SF2-0660	Drag knob screw	.60
67	SF1-0540	Handle lock washer	.45