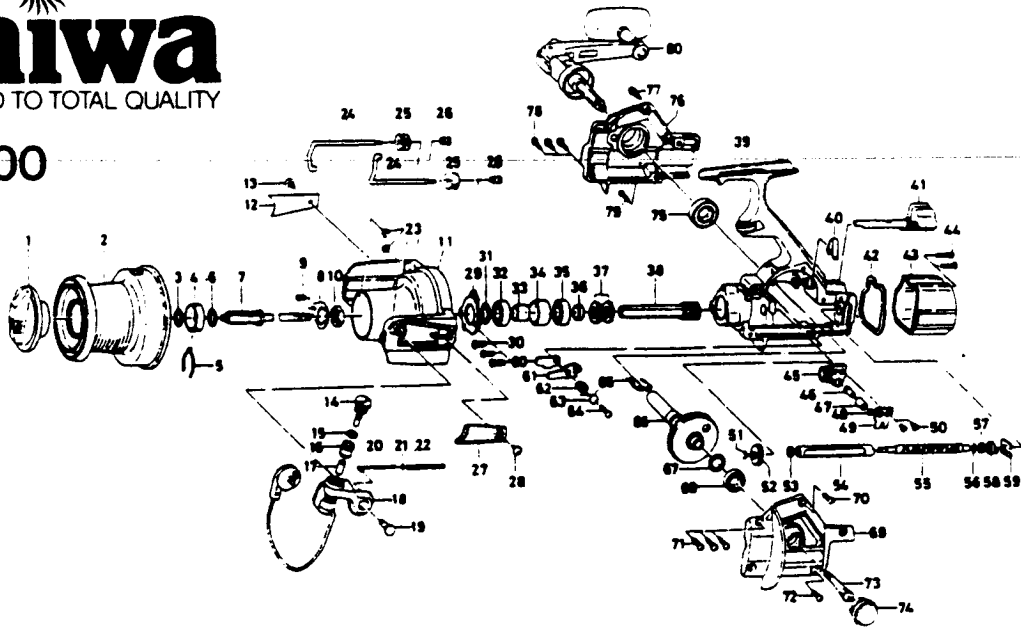


## SS9000



| Key No. | Parts No. | Parts Name                    | Key No. | Parts No. | Parts Name                     |
|---------|-----------|-------------------------------|---------|-----------|--------------------------------|
| 1.      | E12-6802  | Drag knob                     | 43.     | E35-0501  | Rear cover                     |
| 2.      | E35-0701  | Spool assembly                | 44.     | E24-8102  | Rear cover screw               |
| 3.      | E14-6503  | Spool washer                  | 45.     | E26-3102  | Oscillating slider             |
| 4.      | E12-2301  | Click leaf spring holder      | 46.     | E26-4101  | Oscillating pawl               |
| 5.      | B74-7701  | Spool click leaf spring       | 47.     | E26-4201  | Oscillating pawl bush          |
| 6.      | 371-2800  | Main shaft washer             | 48.     | 375-0800  | Oscillating pawl washer        |
| 7.      | E35-0201  | Main shaft assembly           | 49.     | E26-4301  | Oscillating slider cover       |
| 8.      | E33-3801  | Rotor nut holding plate       | 50.     | 352-1502  | Oscillating slider cover screw |
| 9.      | 351-1804  | Rotor nut holding plate screw | 51.     | 320-5901  | Worm shaft gear retainer       |
| 10.     | B43-7603  | Rotor nut                     | 52.     | E34-9201  | Worm shaft gear                |
| 11.     | E34-9701  | Rotor assembly                | 53.     | E33-2501  | Ball bearing B                 |
| 12.     | E26-5901  | Bail trip cover               | 54.     | E34-9001  | Worm shield cover              |
| 13.     | 351-6106  | Bail trip cover screw         | 55.     | E34-9101  | Worm shaft                     |
| 14.     | B21-1305  | Line roller screw             | 56.     | B41-1700  | Worm shaft washer              |
| 15.     | 375-4301  | Lock washer                   | 57.     | E33-2501  | Ball bearing B                 |
| 16.     | E33-3601  | Line roller                   | 58.     | E33-2001  | Worm shaft collar              |
| 17.     | B44-3401  | Line roller bushing           | 59.     | E26-3601  | Worm shaft retainer            |
| 18.     | E34-9801  | Bail                          | 60.     | E34-8401  | Anti-reverse pawl plate        |
| 19.     | E33-3402  | Bail arm screw                | 61.     | E34-8501  | Anti-reverse pawl              |
| 20.     | E32-6701  | Bail spring shaft             | 62.     | E26-2101  | Anti-reverse pawl collar       |
| 21.     | E31-3901  | Bail spring washer            | 63.     | E26-2202  | Anti-reverse pawl spring A     |
| 22.     | E26-5601  | Bail spring                   | 64.     | B83-5002  | Anti-reverse pawl screw        |
| 23.     | 320-5901  | Bail arm screw retainer       | 65.     | E26-4501  | Anti-reverse pawl spring B     |
| 24.     | E35-0101  | Line guard roller shaft       | 66.     | E35-3001  | Drive gear                     |
| 25.     | E32-6801  | Line guard roller             | 67.     | B27-0700  | Drive gear washer              |
| 26.     | E26-6901  | Roller shaft nut              | 68.     | 637-6101  | Ball bearing A                 |
| 27.     | E26-5901  | Bail spring cover             | 69.     | E34-9501  | Left side cover                |
| 28.     | 351-6106  | Bail spring cover screw       | 70.     | B00-9702  | Side cover screw A             |
| 29.     | B67-8401  | Bearing retainer              | 71.     | B00-9701  | Side cover screw B             |
| 30.     | L01-1702  | Bearing retainer screw        | 72.     | E15-8601  | Side cover screw C             |
| 31.     | 372-7603  | Bearing washer                | 73.     | B33-2501  | Handle screw                   |
| 32.     | 637-6101  | Ball bearing A                | 74.     | E33-4803  | Handle screw cap               |
| 33.     | E34-8801  | Spacer                        | 75.     | 637-6101  | Ball bearing A                 |
| 34.     | E34-8901  | Spacing sleeve A              | 76.     | E34-9301  | Right side cover               |
| 35.     | 637-6101  | Ball bearing A                | 77.     | B00-9702  | Side cover screw A             |
| 36.     | E26-2801  | Spacing sleeve B              | 78.     | B00-9701  | Side cover screw B             |
| 37.     | E26-2701  | Anti-reverse ratchet          | 79.     | E15-8601  | Side cover screw C             |
| 38.     | E34-8701  | Pinion gear                   | 80.     | E37-5301  | Handle assembly                |
| 39.     | E34-8201  | Body                          |         |           |                                |
| 40.     | E32-7801  | Anti-reverse cam spring       |         |           |                                |
| 41.     | E26-2303  | Anti-reverse lever            |         |           |                                |
| 42.     | E35-0401  | Water shield                  |         |           |                                |