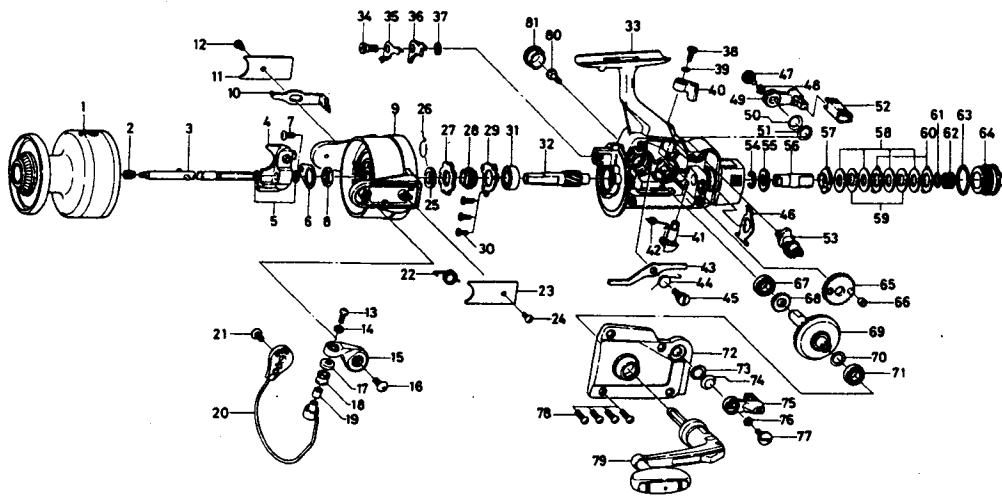


SPINNING REEL ST2670/4070



Key No.	Parts No.	Parts Name	Price Each	Key No.	Parts No.	Parts Name	Price Each
1	E02-6201	Spool assembly	9.50	46	B89-9101	Drag adjusting leaf spring	0.65
2	B78-2901	Main shaft spring	0.50	47	B91-2101	Drag lever screw A	1.35
3	B78-2701	Main shaft	1.95	48	160-8101	Drag lever lock washer A	0.35
4	B78-3001	Oscillating slider	0.70	49	B89-9203	Drag lever A	1.30
5	B78-3101	Oscillating slider retainer	0.35	50	B86-8801	Drag lever washer A	0.35
6	B02-1602	Rotor nut retaining plate	0.60	51	373-7800	Drag lever washer B	0.35
7	B01-7101	Rotor nut retaining plate screw	0.35	52	B86-9001	Drag lever plate	0.85
8	340-8301	Rotor nut	0.50	53	B86-8601	Drag cam	1.30
9	B86-5501	Rotor	12.00	54	B01-3101	Key washer retainer	0.35
10	B89-8901	Bail trip lever	0.35	55	B49-0001	Key washer A	0.35
11	B63-0906	Bail trip cover	0.55	56	B89-9301	Drag washer holder	1.65
12	B01-7102	Bail trip cover screw	0.45	57	B89-9401	Drag washer holder collar	0.50
13	B11-2803	Line roller screw	0.35	58	375-0402	Drag washer	0.65
14	B11-2701	Lock washer	0.40	59	E02-4401	Key washer B	0.35
15	B80-3501	Bail arm	1.95	60	B89-9501	Eared washer	0.35
16	B66-5801	Bail arm screw	1.00	61	B81-1802	Drag coil spring washer	0.35
17	501-2002	Line roller washer	0.75	62	E02-4001	Drag coil spring	0.45
18	B90-2101	Line roller	9.65	63	B93-5501	Drag screw ring	0.75
19	502-1401	Line roller bushing	0.80	64	E02-5501	Drag screw	7.25
20	B90-2201	Bail	6.50	65	B79-0501	Oscillating gear	0.90
21	B84-2101	Bail trip cam screw	0.60	66	B78-9801	Oscillating gear collar	0.35
22	B93-5601	Bail spring	0.50	67	636-6011	Ball bearing	8.40
23	634-6807	Bail spring cover	0.55	68	402-3801	Oscillating pinion gear	1.25
24	B01-7102	Bail spring cover screw	0.45	69	B89-9801	Drive gear	14.40
25	B13-5701	Spring holder	1.00	70	371-2800	Drive gear washer	0.40
26	B76-2701	Anti-reverse pawl spring	0.50	71	636-6011	Ball bearing	8.40
27	B34-2201	Anti-reverse ratchet	1.00	72	B90-0103	Side cover	9.90
28	B04-9101	Spacer	0.55	73	373-7800	Drag lever washer C	0.35
29	B66-5301	Bearing retainer	0.60	74	B86-8801	Drag lever washer D	0.35
30	B01-5801	Bearing retainer screw	0.35	75	B89-9203	Drag lever B	1.30
31	635-4801	Ball bearing	8.25	76	160-8101	Drag lever lock washer B	0.35
32	B66-0004	Pinion gear	7.10	77	B91-2101	Drag lever screw B	1.35
33	B89-7903	Body	27.95	78	B43-8501	Side cover screw	0.50
34	B66-5501	Anti-reverse pawl screw	0.50	79	E02-6101	Handle assembly	18.40
35	B66-5401	Anti-reverse pawl plate	0.55	80	B27-4801	Handle lock screw	0.35
36	B89-8601	Anti-reverse pawl	1.05	81	B86-9901	Handle screw cap	0.55
37	375-1503	Anti-reverse pawl washer	0.35				
38	B88-1201	Anti-reverse lever screw	0.50				
39	160-8401	Anti-reverse lever lock washer	0.35				
40	B86-7702	Anti-reverse lever	1.15				
41	B89-8101	Anti-reverse cam	0.85				
42	B91-2001	Anti-reverse cam spring	0.35				
43	B89-8201	Anti-reverse cam plate	0.55				
44	B86-8001	Anti-reverse cam plate spring	0.35				
45	B86-7901	Anti-reverse cam plate screw	0.55				

ST4070 Special Parts			
1	E02-7801	Spool assembly	10.00
9	B86-5601	Rotor	13.10
10	B90-2001	Bail trip lever	0.55
20	B90-2301	Bail	7.20
33	B89-7904	Body	27.85
72	B90-0104	Side cover	9.90