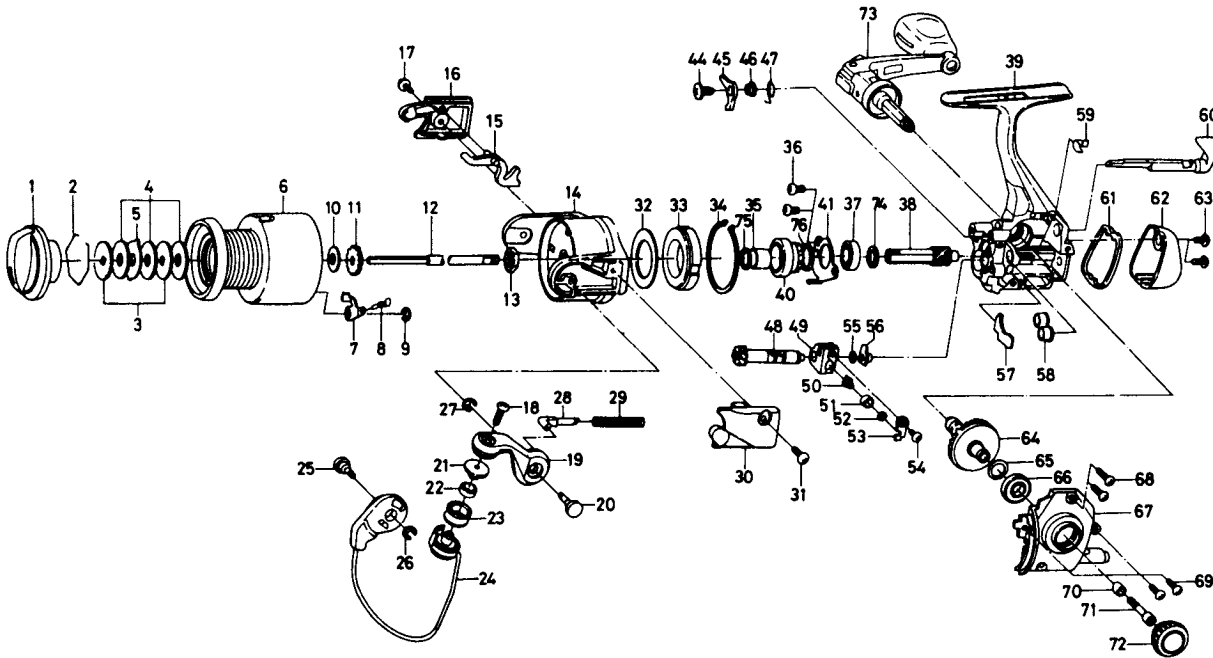


SPINNING REEL TD700i/1000i



No. 2-9 F29-6706

Spool assembly

| Key NO. | Parts No. | Parts Name | Key NO. | Parts No. | Parts Name |
|---------|-----------|------------------------------|---------|-----------|--------------------------------|
| 1 | F20-4405 | Drag knob | 41 | F15-1102 | Bearing retainer |
| 2 | 171-7701 | Drag washer retainer | 44 | L00-1801 | Anti-reverse pawl screw |
| 3 | E13-6101 | Key washer | 45 | F15-1501 | Anti-reverse pawl |
| 4 | E13-6001 | Drag washer | 46 | F15-8301 | Anti-reverse pawl collar |
| 5 | E13-6201 | Eared washer | 47 | F15-1601 | Anti-reverse pawl spring |
| 6 | E29-7808 | Spool assembly | 48 | F17-4301 | Worm shaft |
| 7 | E13-2101 | Click pawl | 49 | F12-2601 | Oscillating slider |
| 8 | B61-8801 | Click spring | 50 | E12-2403 | Oscillating pawl |
| 9 | 320-5901 | Click retainer | 51 | E12-4601 | Oscillating pawl bush |
| 10 | E39-4001 | Spool washer | 52 | 375-0800 | Oscillating pawl washer |
| 11 | E36-5301 | Click gear | 53 | E11-6801 | Oscillating slider cover |
| 12 | F15-8401 | Main shaft | 54 | E15-0203 | Oscillating slider cover screw |
| 13 | 341-9203 | Rotor nut | 55 | 375-4101 | Worm shaft washer |
| 14 | F22-8102 | Rotor | 56 | F05-6901 | Worm shaft collar |
| 15 | F03-0801 | Bail trip lever | 57 | F08-7201 | Shield plate |
| 16 | F15-3104 | Bail trip cover | 58 | F15-1701 | Pinion collar |
| 17 | E36-4201 | Bail trip cover screw | 59 | F15-0701 | Anti-reverse cam spring |
| 18 | B67-9305 | Line roller screw | 60 | F15-0803 | Anti-reverse lever |
| 19 | F15-2405 | Bail arm | 61 | F15-3703 | Water shield |
| 20 | F15-2501 | Bail arm screw | 62 | F15-3803 | Rear cover |
| 21 | F06-6301 | Line roller collar | 63 | E24-8102 | Rear cover screw |
| 22 | F05-5601 | Ball bearing A | 64 | E42-0102 | Drive gear |
| 23 | F05-8901 | Line roller | 65 | 375-8500 | Drive gear washer |
| 24 | F17-4701 | Bail assembly | 66 | 637-5701 | Ball bearing B |
| 25 | F15-2501 | Bail trip cam screw | 67 | F15-2203 | Side cover |
| 26 | 320-5901 | Bail trip cam screw retainer | 68 | E13-0502 | Side cover screw A |
| 27 | 320-5901 | Bail arm screw retainer | 69 | E13-0501 | Side cover screw B |
| 28 | E36-8201 | Bail spring shaft | 70 | F16-9301 | Handle collar |
| 29 | E37-2401 | Bail spring | 71 | F30-3701 | Handle screw |
| 30 | F15-2604 | Bail spring cover | 72 | F15-4402 | Handle screw cap |
| 31 | E36-4201 | Bail spring cover screw | 73 | F26-4801 | Handle assembly |
| 32 | F19-7201 | Oiled washer | 74 | F26-3101 | Spacer |
| 33 | F15-3301 | Roller clutch | 75 | 375-8507 | Rotor washer |
| 34 | F21-2501 | Roller clutch retainer | 76 | F26-8501 | Ball bearing collar |
| 35 | F15-5101 | Spacing sleeve | | | |
| 36 | F21-2201 | Bearing retainer screw | | | |
| 37 | 637-5701 | Ball bearing B | | | |
| 38 | F15-1002 | Pinion gear | | | |
| 39 | F26-4701 | Body assembly | | | |
| 40 | F15-1201 | Anti-reverse ratchet | | | |

TD10001 SPECIAL PARTS

| | | |
|-----|----------|----------------|
| 2-9 | F15-8505 | Spool assembly |
| 6 | F15-8605 | Spool assembly |
| 14 | F21-6002 | Rotor |
| 24 | F15-4501 | Bail assembly |