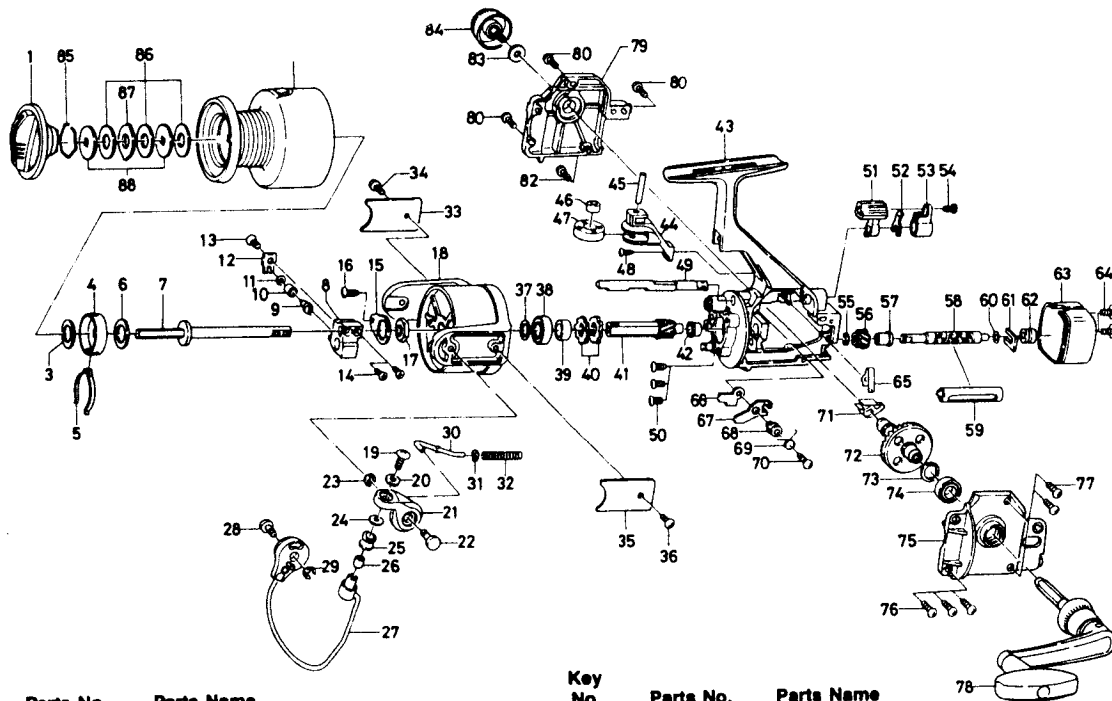


## SPINNING REEL TG 1600H



Key  
No.

Parts No.

Parts Name

1	E27-8102	Drag knob
2	E27-7402	Spool assembly
3	B40-3102	Spool washer
4	E12-2302	Click leaf spring holder
5	B74-7702	Spool click leaf spring
6	375-4200	Main shaft washer
7	E27-7101	Main shaft assembly
8	E19-0601	Oscillating slider
9	E19-1201	Oscillating pawl
10	E19-1301	Oscillating pawl bush
11	375-0800	Oscillating pawl washer
12	E18-7401	Oscillating slider cover
13	352-0901	Oscillating slider cover screw
14	351-0311	Oscillating block screw
15	B66-2601	Rotor nut holding plate
16	B93-3001	Rotor nut holding plate screw
17	340-6602	Rotor nut
18	E19-2004	Rotor
19	353-8201	Line roller screw
20	375-1001	Lock washer
21	E18-8401	Bail arm
22	E12-5001	Bail arm screw
23	320-5901	Bail arm screw retainer
24	373-4501	Line roller washer
25	B41-2901	Line roller
26	B41-3001	Line roller bushing
27	E28-3001	Bail
28	E12-5202	Bail trip cam screw
29	320-5901	Bail trip cam screw retainer
30	E12-4701	Bail spring shaft
31	E11-5901	Bail spring washer
32	E12-4801	Bail spring
33	E19-2101	Bail trip cover
34	B83-4402	Bail trip cover screw
35	E19-2101	Bail spring cover
36	B83-4402	Bail spring cover screw
37	373-7807	Ball bearing retaining washer
38	B62-8601	Ball bearing A
39	B63-0401	Spacing sleeve
40	E20-0801	Anti-reverse ratchet
41	F00-5801	Pinion gear
42	B43-5701	Pinion holder
43	E19-0106	Body
44	E19-0202	Bail kick knock

Key  
No.

Parts No.

Parts Name

45	E11-4801	Bail kick roller pin
46	E11-4701	Bail kick roller collar
47	E11-4604	Bail kick roller
48	E02-7401	Bail kick knock screw
49	E19-0401	Anti-reverse cam
50	E03-7801	Bearing retainer screw
51	B96-5201	Anti-reverse lever
52	321-0101	Anti-reverse lever retainer
53	130-6801	Anti-reverse lever cover
54	353-4401	Anti-reverse lever screw
55	320-5901	Worm shaft gear retainer
56	F00-5901	Worm shaft gear
57	E19-0901	Worm shaft bush
58	E19-0801	Worm shaft
59	E19-0701	Worm shield cover
60	373-1300	Worm shaft washer
61	E18-7101	Worm shaft retainer
62	E19-1101	Worm shaft collar
63	E19-1805	Rear cover
64	351-7704	Rear coverscrew
65	E26-8701	Anti-reverse cam spring
66	B96-5301	Anti-reverse pawl plate
67	E27-7001	Anti-reverse pawl
68	B96-5501	Anti-reverse pawl collar
69	B96-5601	Anti-reverse pawl spring A
70	B00-9701	Anti-reverse pawl screw
71	E27-8601	Anti-reverse pawl spring B
72	E34-1601	Drive gear
73	375-8500	Drive gear washer
74	637-5701	Ball bearing B
75	E19-1706	Left side cover
76	E13-0501	Side cover screw A
77	E11-9602	Side cover screw B
78	E28-2901	Handle assembly
79	E27-9403	Right side cover
80	E13-0501	Side cover screw A
82	E11-9602	Side cover screw B
83	B92-4902	Handle lock washer
84	F00-3301	Handle lock screw
85	170-4101	Drag washer retainer
86	B36-0204	Drag washer
87	372-3832	Eared washer
88	E27-7801	Key washer