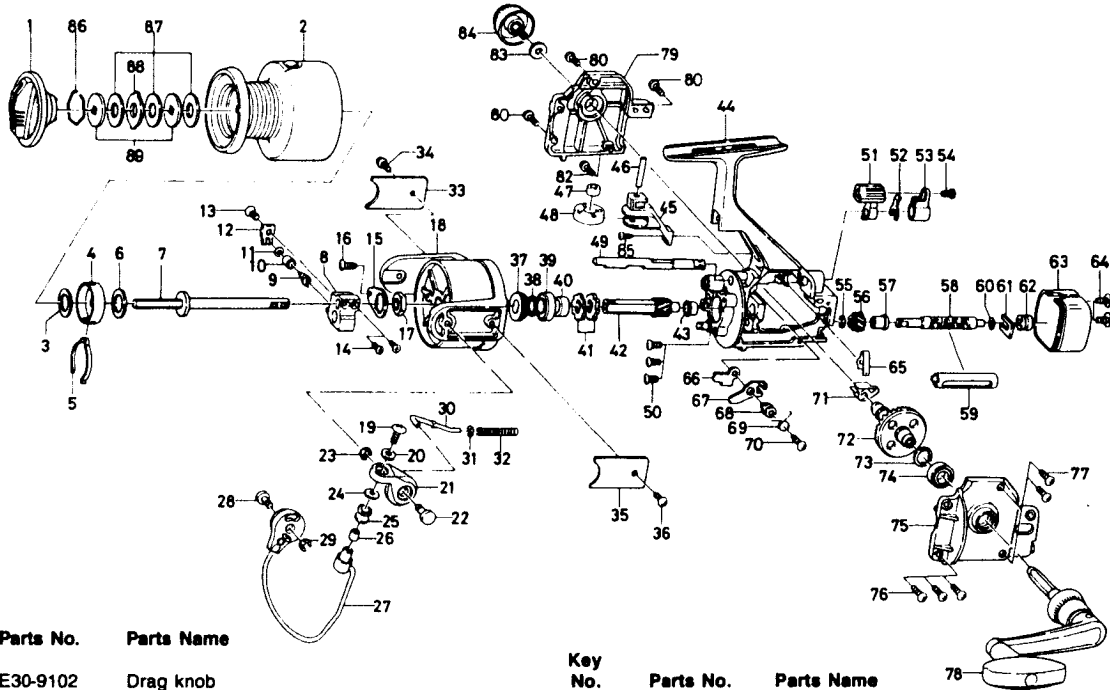


SPINNING REEL TG2600H



Key No.

Key No.	Parts No.	Parts Name
1	E30-9102	Drag knob
2	E30-8802	Spool assembly
3	B40-3102	Spool washer
4	E12-2302	Click leaf spring holder
5	B74-7702	Spool click leaf spring
6	375-4200	Main shaft washer
7	E30-8501	Main shaft assembly
8	E18-6501	Oscillating slider
9	E18-7201	Oscillating pawl
10	E1-7301	Oscillating pawl bush
11	375-0800	Oscillating pawl washer
12	E18-7401	Oscillating slider cover
13	352-0901	Oscillating slider pin
14	352-1501	Oscillating block screw
15	B66-2601	Rotor nut holding plate
16	B93-3001	Rotor nut holding plate screw
17	B10-5701	Rotor nut
18	E12-1304	Rotor
19	353-8201	Line roller screw
20	375-1001	Lock washer
21	E12-4901	Bail arm
22	E12-5001	Bail arm screw
23	320-5901	Bail arm screw retainer
24	B41-3001	Line roller washer
25	B41-2901	Line roller
26	501-1602	Line roller bushing
27	E31-0601	Bail
28	E12-5302	Bail trip cam screw
29	320-5901	Bail trip cam screw retainer
30	E12-4701	Bail spring shaft
31	E11-5901	Bail spring washer
32	E12-4801	Bail spring
33	B01-4003	Bail trip cover
34	B83-4402	Bail trip cover screw
35	B01-4003	Bail spring cover
36	B83-4402	Bail spring cover screw
37	B02-0702	Click gear
38	E30-8701	Ball bearing retaining washer
39	635-4801	Ball bearing A
40	B83-6201	Spacing sleeve
41	E18-6401	Anti-reverse ratchet
42	E34-1701	Pinion gear
43	B96-5701	Pinion holder
44	E30-7903	Body
45	E12-3702	Bail kick knock

Key No.

Key No.	Parts No.	Parts Name
46	E11-4801	Bail kick roller pin
47	E11-4701	Bail kick roller collar
48	E11-4604	Bail kick roller
49	E30-9001	Anti-reverse cam
50	B84-2102	Bearing retainer screw
51	B96-5201	Anti-reverse lever
52	321-0101	Anti-reverse lever retainer
53	130-6801	Anti-reverse lever cover
54	353-4401	Anti-reverse lever screw
55	B33-9801	Worm shaft gear retainer
56	E34-1801	Worm shaft gear
57	E18-6801	Worm shaft bush
58	E30-8201	Worm shaft
59	E18-6601	Worm shield cover
60	373-1300	Worm shaft washer
61	E18-7101	Worm shaft retainer
62	E18-7001	Worm shaft collar
63	E18-8003	Rear cover
64	351-7704	Rear cover screw
65	E26-8701	Anti-reverse cam spring
66	B96-5301	Anti-reverse pawl plate
67	E28-0801	Anti-reverse pawl
68	B96-5501	Anti-reverse pawl collar
69	E18-5501	Anti-reverse pawl spring A
70	B00-9701	Anti-reverse pawl screw
71	E28-0901	Anti-reverse pawl spring B
72	E34-1901	Drive gear
73	373-7800	Drive gear washer
74	E15-4001	Ball bearing B
75	E18-7903	Left side cover
76	B00-9701	Side cover screw A
77	E11-9602	Side cover screw B
78	E31-2601	Handle assembly
79	E30-8302	Right side cover
80	B00-9701	Side cover screw A
82	E11-9602	Side cover screw B
83	B92-4902	Handle lock washer
84	F00-3301	Handle lock screw
85	E02-7401	Bail kick knock screw
86	170-4101	Drag washer retainer
87	B36-0204	Drag washer
88	372-3832	Eared washer
89	E27-7801	Key washer