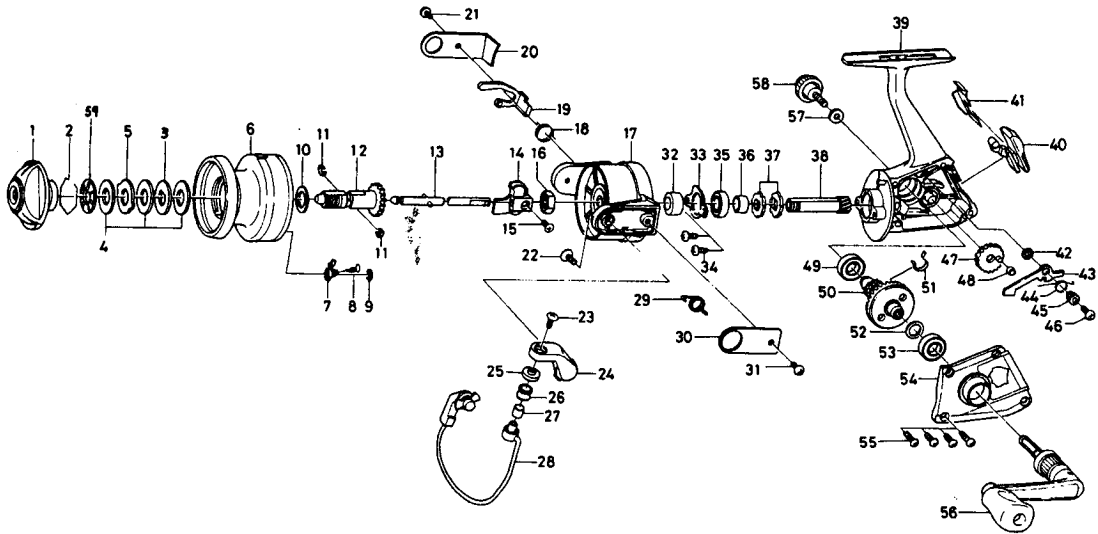


SPINNING REEL W13UL



Key No. 1 ~ 12

6-E14-0401 Spool assembly
6-E15-3501 Spool assembly (Extra Spool)

Key No.	Parts No.	Parts Name	Key No.	Parts No.	Parts Name
1	E14-0902	Drag knob	30	B61-8903	Bail spring cover
2	171-7701	Drag washer retainer	31	B61-7902	Bail spring cover screw
3	374-4802	Key washer	32	E14-3101	Spring holder
4	E14-3301	Drag washer A	33	B45-6401	Bearing retainer
5	373-3603	Eared washer	34	B83-4402	Bearing retainer screw
6	E14-0501	Spool	35	634-1301	Ball bearing
	E15-4301	Spool (Extra Spool)	36	E14-3001	Spacer
7	B07-5301	Click pawl	37	E11-3501	Anti-reverse ratchet
8	144-1211	Click spring	38	E13-9501	Pinion gear
9	320-5901	Click retainer	39	E13-8901	Body
10	E12-3501	Spool washer	40	E13-9101	Anti-reverse lever
11	151-7211	Spool metal leaf spring	41	B79-0101	Anti-reverse cam
12	E14-0701	Spool metal	42	E15-3101	Anti-reverse pawl washer
13	E13-9901	Main shaft	43	E13-9301	Anti-reverse pawl
14	E13-9601	Oscillating slider	44	E13-9401	Anti-reverse pawl spring
15	351-0311	Oscillating block screw	45	B95-9501	Anti-reverse pawl collar
16	341-9201	Rotor nut	46	B00-8601	Anti-reverse pawl screw
17	B61-8503	Rotor assembly	47	B59-1703	Oscillating gear
18	B61-9101	Lever spring	48	B59-1901	Oscillating gear collar
19	B61-9201	Bail trip lever	49	634-1301	Ball bearing
20	B61-9703	Bail trip cover	50	E13-9701	Drive gear
21	B61-7902	Bail trip cover screw	51	E13-9801	Drag adjusting leaf spring
22	B01-7101	Bail arm screw	52	375-8500	Drive gear washer
23	352-2503	Line roller screw	53	634-1301	Ball bearing
24	E13-8801	Bail arm	54	E14-0101	Side cover
25	B45-1601	Line roller washer	55	E13-0502	Side cover screw
26	B84-5301	Line roller	56	E14-0301	Handle assembly
27	B45-1501	Line roller bushing	57	B92-4901	Handle lock washer
28	E14-1101	Bail	58	E03-5502	Handle lock screw
29	B61-8601	Bail spring	59	E15-4101	Drag washer B